

SNIPE CLASS RACING ASSOCIATION

MEASUREMENT DATA SHEET Sheet I- revised January 2009 For boats built after January 1, 2009

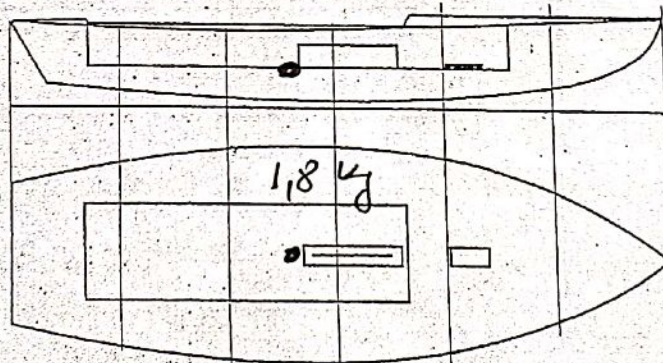
HULL NUMBER 30452 BUILDER PRIMEX
 MODEL SNI 56113337 PRX YEAR 2008
 OWNER FELIPE FRUGONI COUNTRY ARG

BARE HULL COMPLETE from certified mould INCOMPLETE
 HULL MATERIAL: WOOD FIBERGLASS make note of
 DECK MATERIAL: WOOD FIBERGLASS incomplete items

HULL WEIGHT (MIN 125KG) 142
 TOTAL WEIGHT (172.8KG) 142,8
 BALLAST (MAX 15KG mark below) 1,8
 MOI 228
 JIB FITTING (279-330 dist. from pt 0)
 SHROUDS (1778-1981mm dist. from pt. 0)
 UPPER GUDGEON (410+/-3MM)
 LOWER GUDGEON (155 +/-3MM)
 MAST HOLE (1494mm dist. from pt. 0)
 TRUNK HEIGHT (310 -0+3MM)

MAST LENGTH (6499MM)
 Limiting bands & pin
 BOOM LENGTH (2642MM from aft edge of mast)
 Limiting bands
 POLE LENGTH (2642MM)
 RUDDER DIMENSIONS
 RUDDER WEIGHT (2.72kg)
 Fits the Transom (Y/N)
 CENTERBOARD DIMENSIONS
 Band
 Restraining System & stoppers

Mark ballast here



DATE MEASURED 14-4-2022
 MEASURER'S SIGNATURE [Signature]
 MEASURER'S STAMP

02 SCIRA
MEASURER
ARGENTINA

NOTES:

Both pages must be completed and sent to the SCIRA office upon completion of measurement except if hull is from a certified mould.

Appendix III

SCIRA Measurement Check Sheet
To be used with the 80/20 true baseline measurement frame

Owner: Felipe Frognier Date: 14-4-22

Hull # 30452 Builder: PRIMEX Material: FIBER

Station	Chines Height		Total	Allowable Range	Width	Allowable Range
	Starboard	Port				
1	429	428		838-864	139	527-540
2	377	368		724-749	999	991-1003
3	346	335		673-699	1238	1232-1245
4	346	336		680-705	1272	1270-1283
5	388	380		762-787	1141	1137-1149
Transom	456	447		902-927	965	952-965

Station	Sheer		Total	Allowable Range	Width	Allowable Range
	Starboard	Port				
1	782	763		1499-1549	895	895-921
2	719	699		1391-1441	1572	346-1372
3	688	667		1333-1384	1524	1511-1537
4	667	654		1321-1372	1477	1473-1499
5	667	665		1321-1372	1276	1270-1295
Transom	695	695		1384-1435	1030	1022-1048

400mm	Keel	
	Height	Width
1	0	0
2	0	0
3	0	0
4	0	0
5	0	0
Transom	0	0

Rudder	
Weight	3,3
Shape	OK
Thickness	OK
Lock	OK
Keel Ext.	OK

Daggerboard	
Bottom	0
Shape	0
Thickness	0
Stripe	0
Punch mark	0
Tapers	0

Horizontal Transom Offset 203-229 209 LOA 4711-4737 4722

Weight 172,8 Mast Ballast (lead) 1,8 MOI >27.6 278
Boom Bow

Band loc	0
Length <6500mm	0
Limiting pin	0
Sheer mark	0
Weight/bal 9.1kg	0

Band loc	0
Limiting pin	0
Length 2590-2642	0
Pole length <2642mm	0

Stem height 683-708	0
Bow radius	0

Topside Measurements			
Aft end of Trunk 2438-2464 from stem	0	Length of daggerboard slot	0
Top of trunk parallel to baseline	0	Width of daggerboard slot	0
Aft edge of trunk perpendicular to baseline	0	Stem to mast partner >1494	1494
Keel to top of trunk 307-313	310	Length of foredeck >1842	1842
Shroud fitting to stem 1778-1981	1880	Length of aft deck .457	1180
Mast step to sheer (vertical) 390-400	400	Headstay to stem 279-330	0

Measurer ALEJANDRO VIAJANA **02 SCIRA MEASURER ARGENTINA**

SNIFE CLASS RACING ASSOCIATION

MEASUREMENT DATA SHEET

Revised January 2017

For boats built or modified after January 1, 2017

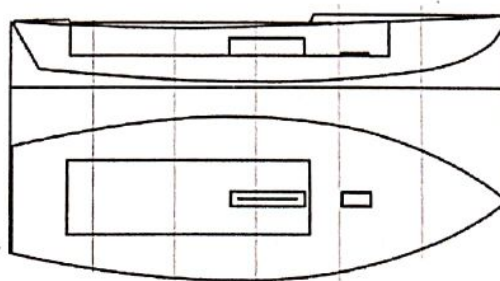
HULL NUMBER	31682	BUILDER	PRIMEX
MODEL	PRXSN1050206	YEAR OF MANUFACTURE	2007
OWNER	GUILLERMO CONTRERAS	COUNTRY	CHI

BARE HULL	<input type="checkbox"/>	COMPLETE	<input checked="" type="checkbox"/>	INCOMPLETE	<input type="checkbox"/>
HULL MATERIAL: WOOD	<input type="checkbox"/>	FIBERGLASS	<input checked="" type="checkbox"/>	make note of	
DECK MATERIAL: WOOD	<input type="checkbox"/>	FIBERGLASS	<input checked="" type="checkbox"/>	incomplete items	
FROM CERTIFIED MOULD	<input type="checkbox"/>				

HULL WEIGHT (min 125kg)	142,2	MAST LENGTH (max 6499mm)	6499
TOTAL WEIGHT (min 172.8kg)	173,9	Limiting marks & pin	OK
CORRECTOR WEIGHTS (max 15kg)	/	Corrector weights (max 100gr)	/
MOI	276	BOOM LENGTH (max 2642mm)	2639
Spring #	105	Limiting marks & pin	OK
JIB FITTING	OK	POLE LENGTH (max 2642mm)	2642
(279-300mm hor. From Hull Datum Point)		RUDDER DIMENSIONS	OK
max 45mm vert. above sheerline)		Weight (min. 2.72kg)	3,3
SHROUDS (1778-1981mm from HDP)	1780	Corrector weight (max 250g)	/
MAST HOLE (min 1494-mm from HDP)	1494	Parallel to transom (tolerance 2mm)	OK
UPPER GUDGEON (410 +/-3mm)	412	DAGGERBOARD DIMENSIONS	OK
LOWER GUDGEON (155 +/-3mm)	153	Band	OK
GUDGEONS DIAMETER (8-8,5mm)	8	Safety line (max 600mm long)	OK
		Restraining system	OK

Insert the actual measurement in the cells marked as

Mark ballast position and amount below



DATE MEASURED 11-4-2022 MEASURER'S STAMP

MEASURER'S NAME ALEJANDRO VIACAUA

NOTES:

02 SCIRA
MEASURER
ARGENTINA

Snipe Class International Racing Association

SCIRA Measuremen Check Sheet

To be used with the 80/20 true baseline measurement frame

Owner GUILLERMO CONTRERAS Date 11-4-2022Hull 31682 Builder PRIMEX Material FIBERNEW MOULD: FIRST OR OF 5 CERTIFICATION RENEW Y/N

DO NOT COMPLETE IF FROM A CERTIFIED MOULD

Chine						
Station	Height			Allowable Range	Width	
	Starboard	Port	Total		Actual	Allowable Range
1	426	432	858	838-864	534	527-540
2	373	373	746	724-749	994	991-1003
3	336	341	677	673-699	1233	1232-1245
4	338	342	680	680-705	1270	1270-1283
5	379	384	763	762-787	1139	1137-1149
Transom	451	454	905	902-927	956	952-965

Sheer						
Station	Height			Allowable Range	Width	
	Starboard	Port	Total		Actual	Allowable Range
1	767	769	1536	1499-1549	915	895-921
2	711	714	1425	1391-1441	1365	1346-1372
3	678	678	1356	1333-1384	1537	1511-1537
4	660	662	1322	1321-1372	1493	1473-1499
5	664	672	1336	1321-1372	1289	1270-1295
Transom	700	704	1404	1384-1435	1028	1022-1048

Keel Station	Height		Width	
	Actual	Allowable Range	Actual	Allowable Range
400mm	224	223-235		
1	/	162	55	Min 51
2	101	89-101	100	99-105
3	63	51-63	100	99-105
4	58	58-70	100	99-105
5	/	114	100	99-105
Transom	168	166-168	100	99-105

Stem Offset		
up from baseline	back from HDP	Actual
267	267-279	268
305	194-206	198
337	153-165	154
381	108-120	110
457	54-66	57
527	26-38	27
311 to 387	intersection of chline extension	

ok

Miscellaneous					
Measurement	Actual	Allowable Range	Measurement	Actual	Allowable Range
LOA	4726	4711-4737	Chine radius at st. 1	ok	Max 19
Horizontal transom offset	203	203-229	Chine radius st. 2 to transom	ok	Max 3
Hull Datum Point height	699	683-708	Deck height	125	Max 127
Bow radius	20	Max 25			

Topside Measurements					
Measurement	Actual	Allowable Range	Measurement	Actual	Allowable Range
Aft end of dagg. slot from Hull datum point	2464	2438-2464	Mast step to sheer (vertical)	400	390-400
Top of case parallel to baseline	ok		Mast hole in the deck	145x62	Max 256x76
Aft edge of slot perpendicular to baseline	ok		Length of foredeck	1851	Min 1842
Keel to top of daggerboard case	310	310-313	Length of aft deck	1200	Min 457
Length of daggerboard slot	543	Max 546	Sheer strikes	ok	Max 32
Width of daggerboard slot	13	Max 13	Gunwale radius	/	Max 12
Splashboard	ok	Min 51 x 610			

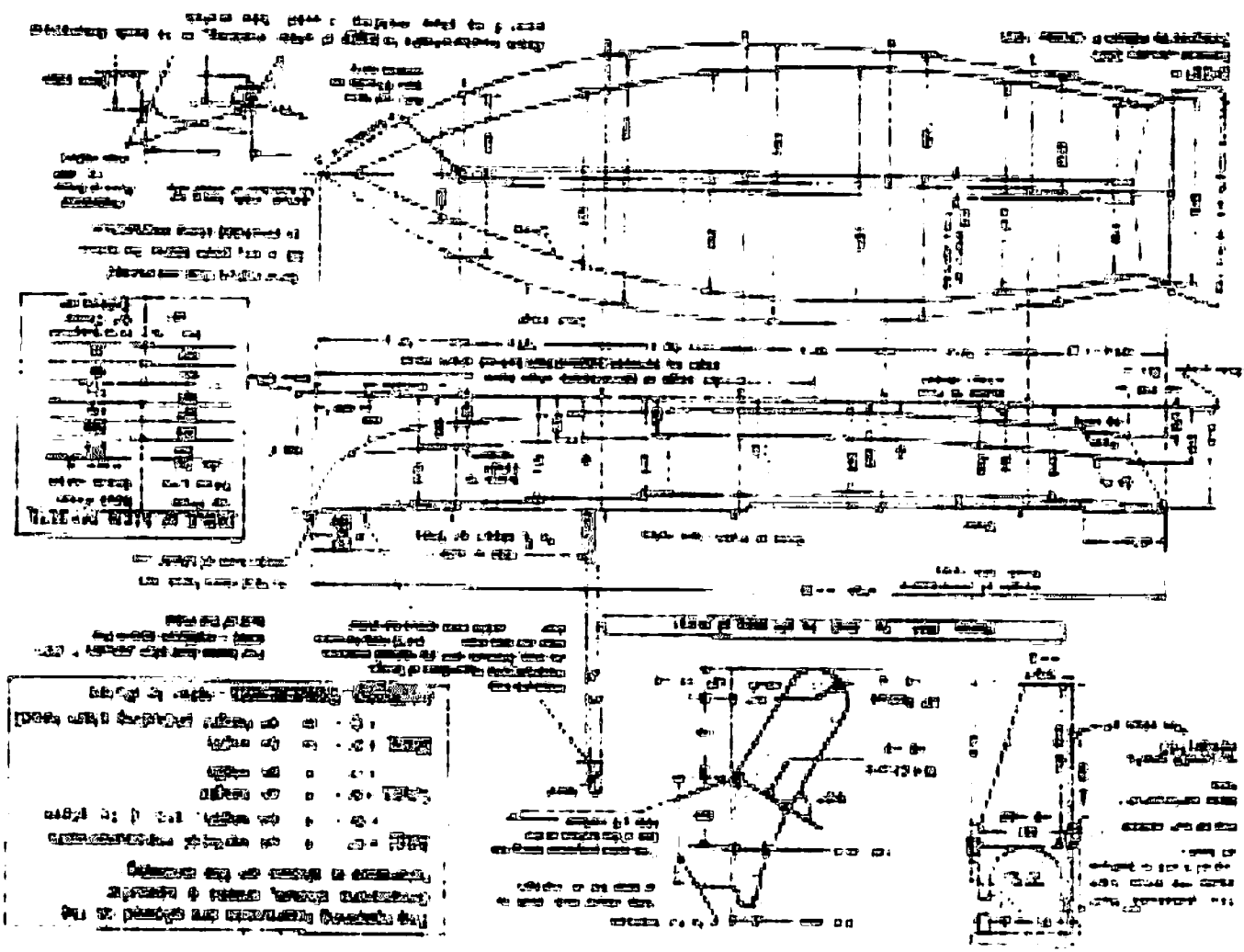
Measurer **ALEJANDRO VIACAVA**



Stamp nr.

10/10/50
 LEO BAY BRIDGE
 DRAWN BY: [Name]
 DATE: 10/10/50

PLEASE ENLARGE



NO.	DESCRIPTION	QTY.	UNIT
1	Concrete	100	cu. yd.
2	Reinforcing Steel	50	tons
3	Formwork	200	sq. ft.
4	Paint	10	gals.
5	Gravel	500	cu. yd.
6	Asphalt	100	cu. yd.
7	Ironwork	50	tons
8	Timber	100	cu. yd.
9	Bricks	1000	sq. ft.
10	Windows	10	units
11	Doors	5	units
12	Roofing	100	sq. ft.
13	Plumbing	10	units
14	Electrical	10	units
15	Sanitary	10	units
16	Heating	10	units
17	Cooling	10	units
18	Lighting	10	units
19	Fire	10	units
20	Security	10	units

1. The bridge is to be built on a concrete foundation.
 2. The bridge is to be built on a concrete foundation.

The bridge is to be built on a concrete foundation. The bridge is to be built on a concrete foundation.

SHIPE CLASS RACING ASSOCIATION

MEASUREMENT DATA SHEET

Sheet 1, revised January 2009
For boats built after January 1, 2009

REG. NO. 3042 BUILDER PRINCE
 MODEL BALL JOINTLESS FIB YEAR 2008
 OWNER ELITE YACHTING COUNTRY ARG

NAVE HULL COMPLETE from certified model INCOMPLETE
 HULL MATERIAL: WOOD FIBERGLASS MAKE NOTE OF
 DECK MATERIAL: WOOD FIBERGLASS INCOMPLETE ITEM

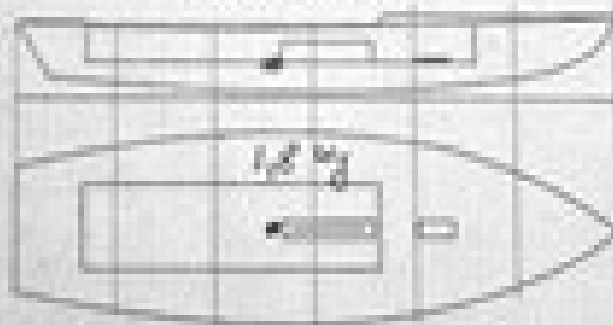
HULL WEIGHT (MIN 120KG) 192
 TOTAL WEIGHT (LTD 200) 203
 BALLAST (MAX 12KG max ball) 11
 POLE 2.38
 DECK FITTING (175-200 max from pt 1)
 BRACKETS (175-200 max from pt 1)
 UPPER GUIDERON (410-4-3MM)
 LOWER GUIDERON (185 -4-3MM)
 MAST HOLE (max 100 max from pt 1)
 TAILW. HEIGHT (315 -6-3MM)

[REVERSE SIDE]

MAST LENGTH (410-4MM)
 Limiting bands & pin
 BOOM LENGTH (max 100 at edge of mast)
 Limiting bands
 POLE LENGTH (315-3MM)
 RUDDER DIMENSIONS
 RUDDER WEIGHT (2.70kg)
 Fix the Transom (175)
 CENTERBOARD DIMENSIONS
 Band
 Restraining System & stoppers

[REVERSE SIDE]

Mark called here



DATE MEASURED 19-4-2011
 MEASURERS SIGNATURE [Signature]
 MEASURERS STAMP **02 SCIRA**
REAL ASA
ARGENTINA

NOTES

