

Snipe Class International Racing Association MEASUREMENT CERTIFICATE

Hull number 30845 Year of manufacturer 2010

Builder DB MARINE Model # MK VI

Owner SAILFAST CO LTD

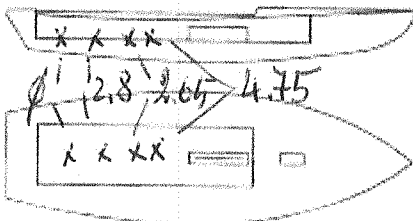
Country JAPAN

Mark ballast here

Weight 172.8

Ballast 10.2

MOI 727.6



Measurer/s GEORGE BREZICH

Date of measurement 02.22.2010

Measurer or National Secretary stamp and signature [Signature]

I hereby agree to all SCIRA rules and by laws. I agree to notify a SCIRA measurer if any equipment modified, replaced and/or transferred.

SCIRA reserves the right to measure this boat and any equipment at any time.

Owner signature _____

Date _____

THIS CERTIFICATE REMAINS WITH THE OWNER OF THIS SNIPE. IT CAN BE REPLACED BY REMEASUREMENT.

SNIPE CLASS RACING ASSOCIATION

MEASUREMENT DATA SHEET Sheet I- revised January 2009 For boats built after January 1, 2009

HULL NUMBER **30845** BUILDER **DB MARINE**
 MODEL **MK VI** YEAR **2010**
 OWNER **SAILFAST CO LTD** COUNTRY **JAPAN**

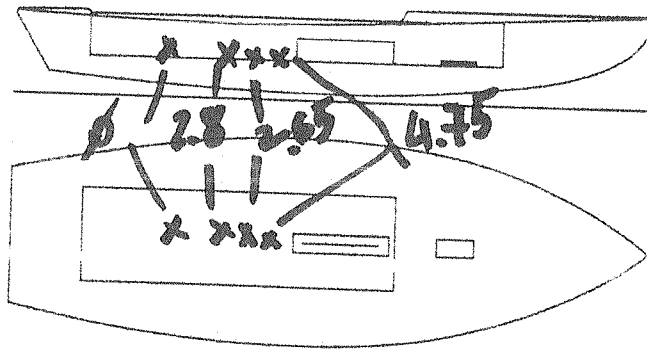
BARE HULL COMPLETE from certified mould INCOMPLETE
 HULL MATERIAL: WOOD FIBERGLASS make note of
 DECK MATERIAL: WOOD FIBERGLASS incomplete items

HULL WEIGHT (MIN 125KG)
 TOTAL WEIGHT (172.8KG)
 BALLAST (MAX 15KG mark below)
 MOI
 JIB FITTING (279-330 dist. from pt 0)
 SHROUDS (1778-1981mm dist. from pt. 0)
 UPPER GUDGEON (410+/-3MM)
 LOWER GUDGEON (155 +/-3MM)
 MAST HOLE (1494mm dist. from pt. 0)
 TRUNK HEIGHT (310 -0+3MM)

10.2

MAST LENGTH (6499MM)
 Limiting bands & pin
 BOOM LENGTH (2642MM from aft edge of mast)
 Limiting bands
 POLE LENGTH (2642MM)
 RUDDER DIMENSIONS
 RUDDER WEIGHT (2.72kg)
 Fits the Transom (Y/N)
 CENTERBOARD DIMENSIONS
 Band
 Restraining System & stoppers

Mark ballast here



DATE MEASURED **02.22.2010**

MEASURER'S SIGNATURE *[Signature]*

MEASURER'S STAMP

NOTES:

Both pages must be completed and sent to the SCIRA office upon completion of measurement except if hull is from a certified mould.

SCIRA Measurement Check Sheet

To be used with the 80/20 true baseline measurement frame

Owner: SAILFAST CO. LTD JAPAN Date: 02.22.2010

Hull # 30845 Builder: DB MARINE Material: F.G.
Chines Height

Station	Starboard	Port	Total	Allowable Range	Width	Allowable Range
1				838-864		527-540
2				724-749		991-1003
3				673-699		1232-1245
4				680-705		1270-1283
5				762-787		1137-1149
Transom				902-927		952-965

Sheer

Station	Starboard	Port	Total	Allowable Range	Width	Allowable Range
1				1499-1549		895-921
2				1391-1441		346-1372
3				1333-1384		1511-1537
4				1321-1372		1473-1499
5				1321-1372		1270-1295
Transom				1384-1435		1022-1048

Keel

	Height	Width
400mm		
1		
2		
3		
4		
5		
Transom		

Rudder

Weight	✓
2.72kg	
Shape	✓
Thickness	✓
Lock	✓
Keel Ext.	✓

Daggerboard

Bottom	✓
Shape	✓
Thickness	✓
Stripe	✓
Punch mark	✓
Tapers	✓

Horizontal Transom Offset 203-229 LOA 4711-4737

Weight 172.8 Ballast (lead) 10.2 MOI >27.6 OK
Mast Boom Bow

50.71
50.67
50.70

Band loc	✓
Length <6499mm	✓
Limiting pin	✓
Sheer mark	✓
Weight/bal 9.1kg	✓

Band loc 2559mm	✓
Limiting pin	✓
Max Length <2642mm	✓
Pole length <2642mm	✓

Stem height 683-708	✓
Bow radius	✓

Topside Measurements

Aft end of Trunk 2438-2464 from stem		Length of daggerboard slot	✓ 435
Top of trunk parallel to baseline		Width of daggerboard slot	13
Aft edge of trunk perpendicular to baseline	✓ 312	Stem to mast partner >1494	✓
Keel to top of trunk 310-313	1785	Length of foredeck >1842	✓
Shroud fitting to stem 1778-1981	390	Length of aft deck >457	✓
Mast step to sheer (vertical) 390-400		Headstay to stem 279-330	284

Measurer _____

SNIPE CLASS RACING ASSOCIATION

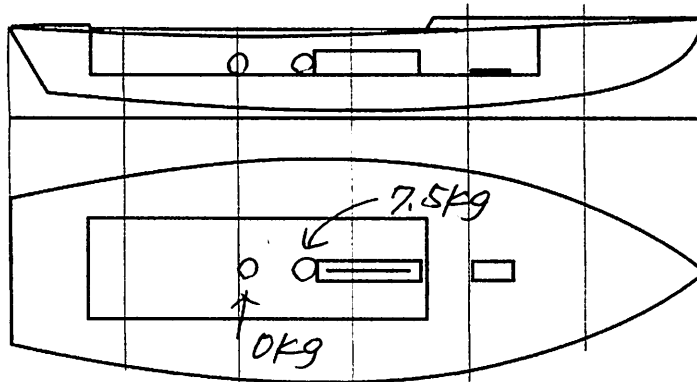
MEASUREMENT DATA SHEET Sheet I- revised January 2009 For boats built after January 1, 2009

HULL NUMBER **30845** BUILDER **DB MARINE**
MODEL YEAR **2010**
OWNER **Toyota Motor Co. Ltd.** COUNTRY **JAPAN**

BARE HULL COMPLETE from certified mould INCOMPLETE
HULL MATERIAL: WOOD FIBERGLASS *make note of*
DECK MATERIAL: WOOD FIBERGLASS *incomplete items*

HULL WEIGHT (MIN 125KG)	<input checked="" type="checkbox"/>	MAST LENGTH (6499MM)	<input checked="" type="checkbox"/>
TOTAL WEIGHT (172.8KG)	<input checked="" type="checkbox"/>	Limiting bands & pin	<input checked="" type="checkbox"/>
BALLAST (MAX 15KG mark below)	<input checked="" type="checkbox"/>	BOOM LENGTH (2642MM from aft edge of mast)	<input checked="" type="checkbox"/>
MOI	<input checked="" type="checkbox"/>	Limiting bands	<input checked="" type="checkbox"/>
JIB FITTING (279-330 dist. from pt 0)	<input checked="" type="checkbox"/>	POLE LENGTH (2642MM)	<input checked="" type="checkbox"/>
SHROUDS (1778-1981mm dist. from pt. 0)	<input checked="" type="checkbox"/>	RUDDER DIMENSIONS	<input checked="" type="checkbox"/>
UPPER GUDGEON (410+/-3MM)	<input checked="" type="checkbox"/>	RUDDER WEIGHT (2.72kg)	<input checked="" type="checkbox"/>
LOWER GUDGEON (155 +/-3MM)	<input checked="" type="checkbox"/>	Fits the Transom (Y/N)	<input checked="" type="checkbox"/>
MAST HOLE (1494mm dist. from pt. 0)	<input checked="" type="checkbox"/>	CENTERBOARD DIMENSIONS	<input checked="" type="checkbox"/>
TRUNK HEIGHT (310 -0+3MM)	<input checked="" type="checkbox"/>	Band	<input checked="" type="checkbox"/>
		Restraining System & stoppers	<input checked="" type="checkbox"/>

Mark ballast here



DATE MEASURED **05, 08, 2010**
MEASURER'S SIGNATURE **NOBUHIKO KUDARA**
MEASURER'S STAMP **UI MEASUREP JAPAN**

NOTES:

Both pages must be completed and sent to the SCIRA office upon completion of measurement except if hull is from a certified mould.

SCIRA Measurement Check Sheet

To be used with the 80/20 true baseline measurement frame

Owner: Toyota Motor Co. Ltd Date: 05.08.2010

Hull # 30845 Builder: DB MARINE Material: F, G

Chines Height

Station	Starboard	Port	Total	Allowable Range	Width	Allowable Range
1				838-864		527-540
2				724-749		991-1003
3				673-699		1232-1245
4				680-705		1270-1283
5				762-787		1137-1149
Transom				902-927		952-965

Sheer

Station	Starboard	Port	Total	Allowable Range	Width	Allowable Range
1				1499-1549		895-921
2				1391-1441		346-1372
3				1333-1384		1511-1537
4				1321-1372		1473-1499
5				1321-1372		1270-1295
Transom				1384-1435		1022-1048

Keel

	Height	Width
400mm		
1		
2		
3		
4		
5		
Transom		

Rudder

Weight	
2.72kg	
Shape	
Thickness	
Lock	
Keel Ext.	

Daggerboard

Bottom	
Shape	
Thickness	
Stripe	
Punch mark	
Tapers	

Horizontal Transom Offset 203-229 LOA 4711-4737

Weight 172.8 kg Ballast (lead) 7.50 kg MOI > 27.6 200

Mast

Band loc	✓
Length <6499mm	✓
Limiting pin	✓
Sheer mark	✓
Weight/bal 9.1kg	✓

Boom

Band loc 2559mm	✓
Limiting pin	✓
Max Length <2642mm	✓
Pole length <2642mm	✓

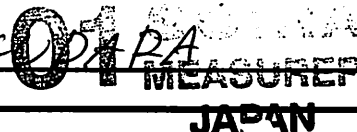
Bow

Stem height 683-708	✓
Bow radius	✓

Topside Measurements

Aft end of Trunk 2438-2464 from stem	✓	Length of daggerboard slot	✓
Top of trunk parallel to baseline	✓	Width of daggerboard slot	✓
Aft edge of trunk perpendicular to baseline	✓	Stem to mast partner >1494	✓
Keel to top of trunk 310-313	✓	Length of foredeck >1842	✓
Shroud fitting to stem 1778-1981	✓	Length of aft deck >457	✓
Most step to sheer (vertical) 390-400	✓	Headstay to stem 279-330	✓

Measurer NOBUHIKO KODARA



(第七号様式)

計測証明書

登録番号 No. **30845**

新規計測・再計測

- 所有者 氏名 トヨタ自動車(株)
住所 愛知県豊田市トヨタ町藩地
- 建造者 氏名 ヒールソン
住所 _____

上記は本協会登録計測証であることを証明する。

日本スナイプ協会

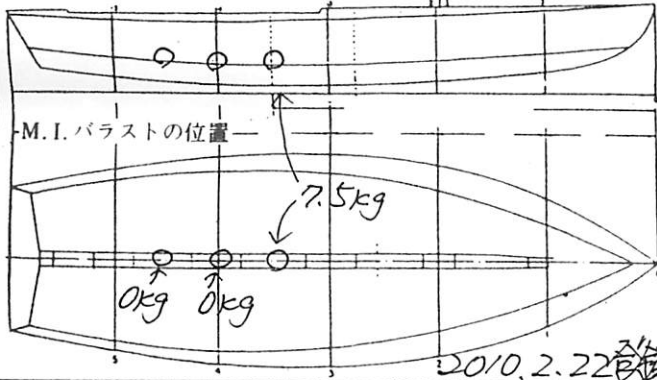
計測年月日 2010年 5月 8日

計測員

署名

百済信産

材質 _____ 重量 172.8 kg バラスト 7.50 kg



備考 M.O.I. = 200
 スピニング係数 = 14.884909 (25回 66.9秒)
 実測値 66.9秒

計測証明書の再発行 (移籍、紛失)

2010年 5月 8日 発行者氏名

百済信産

新規計測と再計測のどちらかを消す。
再計測証明書は、新規計測書に重ねて綴る。