

30903

# SNIFE CLASS RACING ASSOCIATION

## MEASUREMENT DATA SHEET Sheet I- revised January 2009 For boats built after January 1, 2009

HULL NUMBER 30903 BUILDER TIBETECH

MODEL MK II YEAR 2010

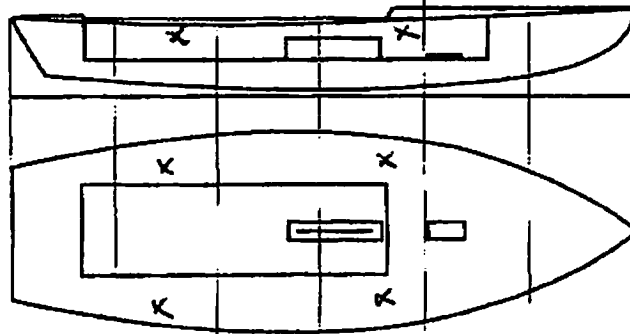
OWNER MARTIN FEASER COUNTRY USA

BARE HULL  COMPLETE  from certified mould  INCOMPLETE   
 HULL MATERIAL: WOOD  FIBERGLASS  *make note of*  
 DECK MATERIAL: WOOD  FIBERGLASS  *incomplete items*

HULL WEIGHT (MIN 125KG)   
 TOTAL WEIGHT (172.8KG)   
 BALLAST (MAX 15KG mark below)   
 MOI   
 JIB FITTING (279-330 dist. from pt 0)   
 SHROUDS (1778-1981mm dist. from pt. 0)   
 UPPER GUDGEON (410+/-3MM)   
 LOWER GUDGEON (155 +/-3MM)   
 MAST HOLE (1494mm dist. from pt. 0)   
 TRUNK HEIGHT (310 -0+3MM)

MAST LENGTH (6499MM)   
 Limiting bands & pin   
 BOOM LENGTH (2642MM from aft edge of mast)   
 Limiting bands   
 POLE LENGTH (2642MM)   
 RUDDER DIMENSIONS   
 RUDDER WEIGHT (2.72kg)   
 Fits the Transom (Y/N)   
 CENTERBOARD DIMENSIONS   
 Band   
 Restraining System & stoppers

Mark ballast here



DATE MEASURED 6/18/10

MEASURER'S SIGNATURE [Signature]

MEASURER'S STAMP

NOTES:

**Both pages must be completed and sent to the SCIRA office upon completion of measurement except if hull is from a certified mould.**

ATTN: JERELYN 619-222-0528  
FROM: CALOR 401-423-0336

2 PAGES

# SCIRA Measurement Check Sheet

To be used with the 80/20 true baseline measurement frame

Owner: MARTIN Date: 6/18/00

Hull # 30903 Builder: JT Material: FR

### Chines Height

Station	Starboard	Port	Total	Allowable Range	Width	Allowable Range
1	420	422	842	838-864	638	527-540
2	375	370	745	724-749	612	991-1003
3	335	315	650	673-699	545	1232-1245
4	305	345	650	680-705	425	1270-1283
5	285	325	610	762-787	305	1137-1149
Transom	464	464	928	902-927	867	952-965

### Sheer

Station	Starboard	Port	Total	Allowable Range	Width	Allowable Range
1	711	752	1463	1499-1549	1222	895-921
2	713	720	1433	1391-1441	1072	346-1372
3	677	676	1353	1333-1384	1532	1511-1537
4	684	687	1371	1321-1372	1443	1473-1499
5	670	691	1361	1321-1372	1275	1270-1295
Transom	705	705	1410	1384-1435	1372	1022-1048

### Keel

	Height	Width
400mm		
1		
2		
3		
4		
5		
Transom		

### Rudder

Weight	2.72kg
Shape	
Thickness	
Lock	
Keel Ext.	

### Daggerboard

Bottom	
Shape	
Thickness	
Stripe	
Punch mark	
Tapers	

Horizontal Transom Offset 203-229 LOA 4711-4737

Weight 381 Ballast (lead) 27.81 MOI >27.6

Mast SW Boom SW Bow

Band loc	
Length <6499mm	
Limiting pin	
Sheer mark	
Weight/bal 9.1kg	

Band loc 2559mm	
Limiting pin	
Max Length <2642mm	
Pole length <2642mm	

Stem height 683-708	
Bow radius	

### Topside Measurements

Aft end of Trunk 2438-2464 from stem		Length of daggerboard slot	<input checked="" type="checkbox"/>
Top of trunk parallel to baseline		Width of daggerboard slot	<input checked="" type="checkbox"/>
Aft edge of trunk perpendicular to baseline	<input checked="" type="checkbox"/>	Stem to mast partner >1494	<input checked="" type="checkbox"/>
Keel to top of trunk 310-313		Length of foredeck >1842	<input checked="" type="checkbox"/>
Shroud fitting to stem 1778-1981	<input checked="" type="checkbox"/>	Length of aft deck >457	<input checked="" type="checkbox"/>
Mast step to sheer (vertical) 390-400	<input checked="" type="checkbox"/>	Headstay to stem 279-330	<input checked="" type="checkbox"/>

Measurer [Signature]