

SNIPE CLASS RACING ASSOCIATION

MEASUREMENT DATA SHEET Sheet I- revised January 2009 For boats built after January 1, 2009

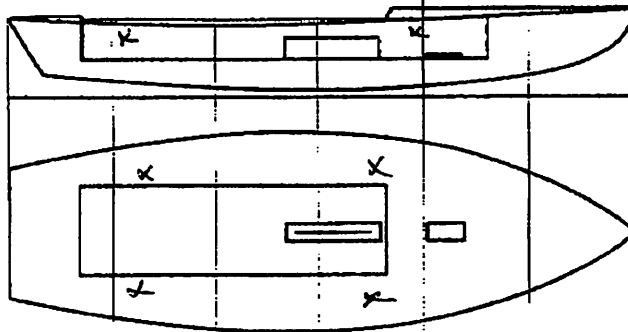
HULL NUMBER 3090-4 BUILDER TIBETRA
 MODEL Mk 3 YEAR 2010
 OWNER LEE GRIFFITH COUNTRY USA

BARE HULL COMPLETE from certified mould INCOMPLETE
 HULL MATERIAL: WOOD FIBERGLASS make note of
 DECK MATERIAL: WOOD FIBERGLASS incomplete items

HULL WEIGHT (MIN 125KG)
 TOTAL WEIGHT (172.8KG)
 BALLAST (MAX 15KG mark below)
 MOI
 JIB FITTING (279-330 dist. from pt 0)
 SHROUDS (1778-1981mm dist. from pt. 0)
 UPPER GUDGEON (410+/-3MM)
 LOWER GUDGEON (155 +/-3MM)
 MAST HOLE (1494mm dist. from pt. 0)
 TRUNK HEIGHT (310 -0+3MM)

MAST LENGTH (6499MM)
 Limiting bands & pin
 BOOM LENGTH (2642MM from aft edge of mast)
 Limiting bands
 POLE LENGTH (2642MM)
 RUDDER DIMENSIONS
 RUDDER WEIGHT (2.72kg)
 Fits the Transom (Y/N)
 CENTERBOARD DIMENSIONS
 Band
 Restraining System & stoppers

Mark ballast here



DATE MEASURED 7/16/10
 MEASURER'S SIGNATURE [Signature]
 MEASURER'S STAMP

NOTES: MAST + Boom + pole
from PREVIOUS BOAT

Both pages must be completed and sent to the SCIRA office upon completion of measurement except if hull is from a certified mould.

SCIRA Measurement Check Sheet

To be used with the 80/20 true baseline measurement frame

Owner: Lee Gentry Date: 2/16/10

Hull # 30904 Builder: TT Material: FG

Chines Height

| Station | Starboard | Port | Total | Allowable Range | Width | Allowable Range |
|---------|-----------|------|-------|-----------------|-------|-----------------|
| 1 | 475 | 426 | 901 | 838-864 | 336 | 527-540 |
| 2 | 375 | 342 | 717 | 724-749 | 1082 | 991-1003 |
| 3 | 380 | 245 | 625 | 673-699 | 1138 | 1232-1245 |
| 4 | 335 | 218 | 553 | 680-705 | 1105 | 1270-1283 |
| 5 | 371 | 210 | 581 | 762-787 | 1147 | 1137-1149 |
| Transom | 450 | 423 | 873 | 902-927 | 915 | 952-965 |

Sheer

| Station | Starboard | Port | Total | Allowable Range | Width | Allowable Range |
|---------|-----------|------|-------|-----------------|-------|-----------------|
| 1 | 243 | 259 | 502 | 1499-1549 | 899 | 895-921 |
| 2 | 219 | 218 | 437 | 1391-1441 | 1372 | 346-1372 |
| 3 | 684 | 611 | 1295 | 1333-1384 | 1520 | 1511-1537 |
| 4 | 620 | 622 | 1242 | 1321-1372 | 1188 | 1473-1499 |
| 5 | 77 | 645 | 722 | 1321-1372 | 1705 | 1270-1295 |
| Transom | 629 | 700 | 1329 | 1384-1435 | 1240 | 1022-1048 |

Keel

| | Height | Width |
|---------|--------|-------|
| 400mm | | |
| 1 | | |
| 2 | | |
| 3 | | |
| 4 | | |
| 5 | | |
| Transom | | |

Rudder

| | |
|-----------|--|
| Weight | |
| 2.72kg | |
| Shape | |
| Thickness | |
| Lock | |
| Keel Ext. | |

Daggerboard

| | |
|------------|--|
| Bottom | |
| Shape | |
| Thickness | |
| Stripe | |
| Punch mark | |
| Tapers | |

Horizontal Transom Offset 203-229 LOA 4711-4737

Weight 381 Ballast (lead) 82 lbs MOI > 27.6 $0.2 \cdot 92 = 27.92$

Mast

| | |
|------------------|--|
| Band loc | |
| Length < 6499mm | |
| Limiting pin | |
| Sheer mark | |
| Weight/bal 9.1kg | |

Boom

| | |
|----------------------|--|
| Band loc 2559mm | |
| Limiting pin | |
| Max Length < 2642mm | |
| Pole length < 2642mm | |

Bow

| | |
|---------------------|--|
| Stem height 683-708 | |
| Bow radius | |

Topside Measurements

| | | | |
|---|--|-----------------------------|--|
| Aft end of Trunk 2438-2464 from stem | | Length of daggerboard slot | |
| Top of trunk parallel to baseline | | Width of daggerboard slot | |
| Aft edge of trunk perpendicular to baseline | | Stem to mast partner > 1494 | |
| Keel to top of trunk 310-313 | | Length of foredeck > 1842 | |
| Shroud fitting to stem 1778-1981 | | Length of aft deck > 457 | |
| Mast step to sheer (vertical) 390-400 | | Headstay to stem 279-330 | |

Measurer CNC