

SNIPE CLASS RACING ASSOCIATION

31009

MEASUREMENT DATA SHEET

Sheet I- revised January 2009
For boats built after January 1, 2009

HULL NUMBER 31009 BUILDER Tsujiido
 MODEL # YEAR 2011
 OWNER Chuo University COUNTRY JAPAN

BARE HULL
 HULL MATERIAL: WOOD
 DECK MATERIAL: WOOD

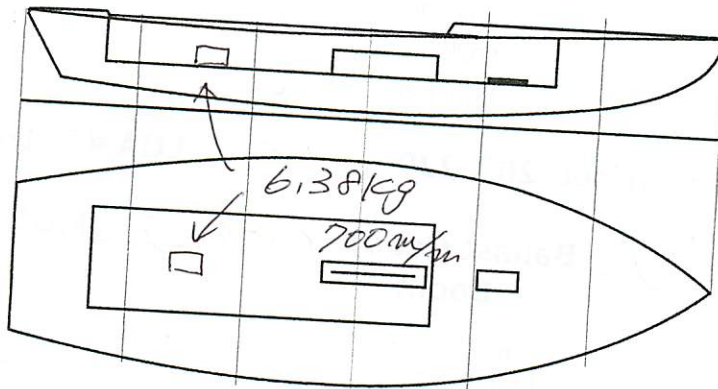
COMPLETE from certified mould
 FIBERGLASS
 FIBERGLASS

INCOMPLETE
 make note of
 incomplete items

HULL WEIGHT (MIN 125KG)
 TOTAL WEIGHT (172.8KG)
 BALLAST (MAX 15KG mark below)
 MOI
 JIB FITTING (279-330 dist. from pt 0)
 SHROUDS (1778-1981mm dist. from pt. 0)
 UPPER GUDGEON (410+/-3MM)
 LOWER GUDGEON (155 +/-3MM)
 MAST HOLE (1494mm dist. from pt. 0)
 TRUNK HEIGHT (310 -0+3MM)

MAST LENGTH (6499MM)
 Limiting bands & pin
 BOOM LENGTH (2642MM from aft edge of mast)
 Limiting bands
 POLE LENGTH (2642MM)
 RUDDER DIMENSIONS
 RUDDER WEIGHT (2.72kg)
 Fits the Transom (Y/N)
 CENTERBOARD DIMENSIONS
 Band
 Restraining System & stoppers

Mark ballast here



DATE MEASURED 7.15.2011
 MEASURER'S SIGNATURE HOBUHIKO KUPARA
 MEASURER'S STAMP **J1 SCIRA MEASUREMENT JAPAN**
 NOTES:

Both pages must be completed and sent to the SCIRA office upon completion of measurement except if hull is from a certified mould.

SCIRA Measurement Check Sheet

To be used with the 80/20 true baseline measurement frame

Owner: Chuo University
 Date: 7.15.2011

Hull # 31009 Builder: Jayido
 Material: FRP

Station	Height		Total	Allowable Range	Width	Allowable Range
	Starboard	Port				
1	724-749			838-864		991-1003
2	673-699			724-749	} ok	1232-1245
3	680-705			680-705		1270-1283
4	762-787			762-787		1137-1149
5	902-927			902-927		952-965

Station	Starboard		Total	Allowable Range	Width	Allowable Range
	Starboard	Port				
1	1391-1441			1499-1549		346-1372
2	1333-1384			1391-1441	} ok	1511-1537
3	1321-1372			1321-1372		1473-1499
4	1321-1372			1321-1372		1270-1295
5	1384-1435			1384-1435		1022-1048

400mm	Height		Width
	Starboard	Port	
1			
2			
3			
4			
5			

Weight	2.72kg	✓
Shape		✓
Thickness		✓
Lock		✓
Keel Ext.		✓

Bottom	✓
Shape	✓
Thickness	✓
Stripe	✓
Punch mark	✓
Tapers	✓

Horizontal Transom Offset 203-229 LOA 4711-4737 OK
 Weight 192.8kg Ballast (lead) 6.38kg MOI > 27.6 OK
 Boom MOI 1-200 OK

Band loc	✓
Length > 649mm	✓
Limiting pin	✓
Sheer mark	✓
Weight/bal 9.1kg	✓

Band loc	2559mm	✓
Limiting pin		✓
Max Length	< 2642mm	✓
Pole length	< 2642mm	✓

Stem height	683-708	✓
Bow radius		✓

Topside Measurements	
Length of daggerboard slot	✓
Width of daggerboard slot	✓
Stem to mast partner > 1494	✓
Aft edge of trunk perpendicular to baseline	✓
Top of trunk parallel to baseline	✓
Aft end of Trunk 2438-2464 from stem	✓
Band loc	✓
Limiting pin	✓
Length of aft deck > 457	✓
Headstay to stem 279-330	✓

Measurer: YOSHIO, KODARA
 SCIRA MEASURE

計測証明書

登録番号 No. 3/009

新規計測・再計測

- 1. 所有者 氏名 中央大学
住所 中央大学
- 2. 建造者 氏名 辻堂カoge
住所 辻堂カoge

上記は本協会登録計測証であることを証明する。

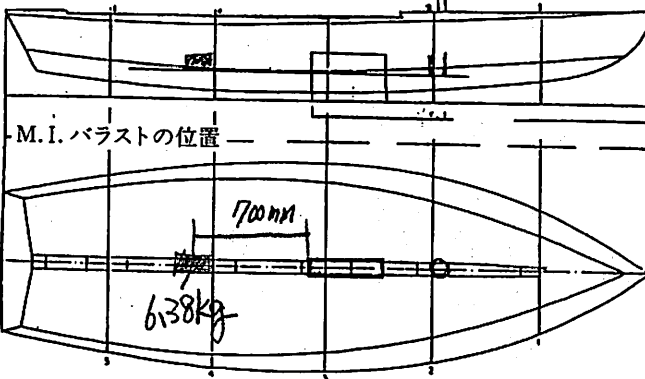
日本スナイプ協会

計測年月日 2011年 7月15日

計測員

署名 山田 千子

バラスト材質 鉛, 艇重量 172.8 kg, バラスト重量 6.20 kg



備考 MOI = 201 戻測値 67.5秒
 スプリング係数 = 14.664 (25回 → 67.4秒)

新規計測と再計測のどちらかを消す。
再計測証明書は、新規計測書に重ねて綴る。

計測証明書の再発行 (移籍、紛失)

年 月 日 発行者氏名

