

SNIPE CLASS RACING ASSOCIATION

MEASUREMENT DATA SHEET

Sheet I- revised January 2009

For boats built after January 1, 2009

HULL NUMBER 31011 BUILDER DIEMER

MODEL 2011 YEAR 2011

OWNER Marizio COUNTRY Brazil

BARE HULL

HULL MATERIAL: WOOD

DECK MATERIAL: WOOD

COMPLETE from certified mould

FIBERGLASS

FIBERGLASS

INCOMPLETE

make note of incomplete items

HULL WEIGHT (MIN 125KG)

TOTAL WEIGHT (172.8KG)

BALLAST (MAX 15KG mark below)

MOI

JIB FITTING (279-330 dist. from pt 0)

SHROUDS (1778-1981mm dist. from pt. 0)

UPPER GUDGEON (410+/-3MM)

LOWER GUDGEON (155 +/-3MM)

MAST HOLE (1494mm dist. from pt. 0)

TRUNK HEIGHT (310 -0+3MM)

MAST LENGTH (6499MM)

Limiting bands & pin

BOOM LENGTH (2642MM from aft edge of mast)

Limiting bands

POLE LENGTH (2642MM)

RUDDER DIMENSIONS

RUDDER WEIGHT (2.72kg)

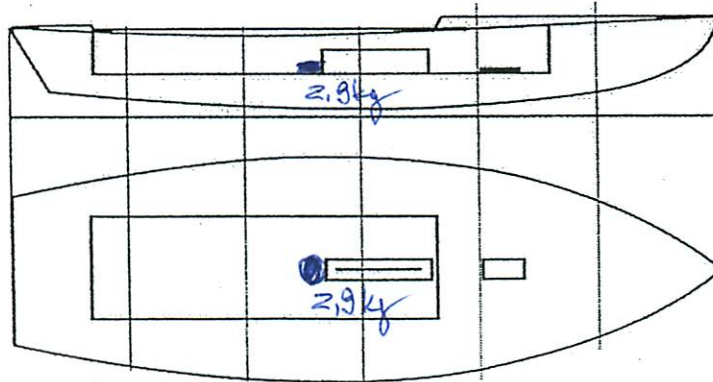
Fits the Transom (Y/N)

CENTERBOARD DIMENSIONS

Band

Restraining System & stoppers

Mark ballast here



DATE MEASURED 09/15/2011

MEASURER'S SIGNATURE M. Hansen

MEASURER'S STAMP **01 SCIRA MEASURER BRAZIL**

NOTES:

Both pages must be completed and sent to the SCIRA office upon completion of measurement except if hull is from a certified mould.

SCIRA Measurement Check Sheet

To be used with the 80/20 true baseline measurement frame

Owner: Mauricio Date: 09/15/2011

Hull # 31011 Builder: DIEMER Material: FG

Chines Height

Station	Starboard	Port	Total	Allowable Range	Width	Allowable Range
1	425	424	849	838-864	534	527-540
2	375	374	749	724-749	493	991-1003
3	344	343	687	673-699	1233	1232-1245
4	343	342	685	680-705	1274	1270-1283
5	384	383	767	762-787	1138	1137-1149
Transom	456	452	908	902-927	954	952-965

Sheer

Station	Starboard	Port	Total	Allowable Range	Width	Allowable Range
1	772	770	1542	1499-1549	820	895-921
2	716	716	1431	1391-1441	1360	346-1372
3	689	687	1376	1333-1384	1521	1511-1537
4	670	668	1338	1321-1372	1473	1473-1499
5	673	675	1348	1321-1372	1272	1270-1295
Transom	695	696	1391	1384-1435	1023	1022-1048

Keel

	Height	Width
400mm	✓	✓
1	✓	✓
2	✓	✓
3	✓	✓
4	✓	✓
5	✓	✓
Transom	✓	✓

Rudder

Weight	✓
2.72kg	
Shape	✓
Thickness	✓
Lock	✓
Keel Ext.	✓

Daggerboard

Bottom	✓
Shape	✓
Thickness	✓
Stripe	✓
Punch mark	✓
Tapers	✓

Horizontal Transom Offset 203-229 ✓ LOA 4711-4737 ✓

Weight 172.8kg Mast Ballast (lead) 2.9kg Boom MOI >27.6 28.07 slug/m² Bow

Band loc	✓
Length <6499mm	✓
Limiting pin	✓
Sheer mark	✓
Weight/bal 9.1kg	✓

Band loc 2559mm	✓
Limiting pin	✓
Max Length <2642mm	✓
Pole length <2642mm	✓

Stem height 683-708	✓
Bow radius	✓

Topside Measurements

Aft end of Trunk 2438-2464 from stem	✓	Length of daggerboard slot	✓
Top of trunk parallel to baseline	✓	Width of daggerboard slot	✓
Aft edge of trunk perpendicular to baseline	✓	Stem to mast partner >1494	✓
Keel to top of trunk 310-313 <u>311</u>	✓	Length of foredeck >1842	✓
Shroud fitting to stem 1778-1981	✓	Length of aft deck >457	✓
Mast step to sheer (vertical) 390-400	✓	Headstay to stem 279-330	✓

Measurer M. Forsum