

# SNIPE CLASS RACING ASSOCIATION

## MEASUREMENT DATA SHEET Sheet I- revised January 2009 For boats built after January 1, 2009

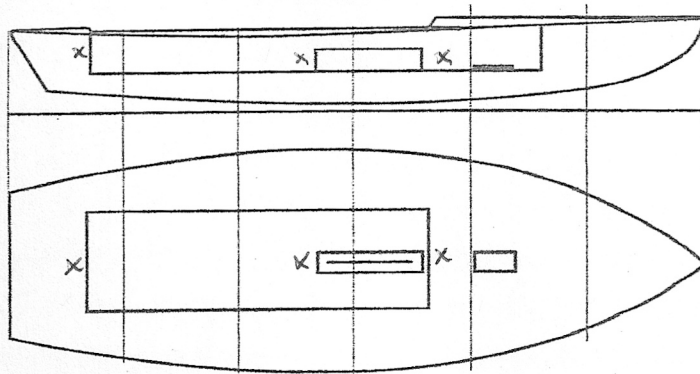
HULL NUMBER 31061 BUILDER JIBTECH  
 MODEL MK 3 YEAR 2012  
 OWNER ANDREW PIMENTAL COUNTRY USA

BARE HULL  COMPLETE  from certified mould  INCOMPLETE   
 HULL MATERIAL: WOOD  FIBERGLASS  *make note of*  
 DECK MATERIAL: WOOD  FIBERGLASS  *incomplete items*

HULL WEIGHT (MIN 125KG)   
 TOTAL WEIGHT (172.8KG)   
 BALLAST (MAX 15KG mark below)   
 MOI   
 JIB FITTING (279-330 dist. from pt 0)   
 SHROUDS (1778-1981mm dist. from pt. 0)   
 UPPER GUDGEON (410+/-3MM)   
 LOWER GUDGEON (155 +/-3MM)   
 MAST HOLE (1494mm dist. from pt. 0)   
 TRUNK HEIGHT (310 -0+3MM)

MAST LENGTH (6499MM)   
 Limiting bands & pin   
 BOOM LENGTH (2642MM from aft edge of mast)   
 Limiting bands   
 POLE LENGTH (2642MM)   
 RUDDER DIMENSIONS   
 RUDDER WEIGHT (2.72kg)   
 Fits the Transom (Y/N)   
 CENTERBOARD DIMENSIONS   
 Band   
 Restraining System & stoppers

Mark ballast here



DATE MEASURED 3/7/12  
 MEASURER'S SIGNATURE [Signature]  
 MEASURER'S STAMP .....

NOTES:

**Both pages must be completed and sent to the SCIRA office upon completion of measurement except if hull is from a certified mould.**