

# SNIPE CLASS RACING ASSOCIATION

## MEASUREMENT DATA SHEET Sheet I- revised January 2009 For boats built after January 1, 2009

HULL NUMBER 31080 BUILDER LO ZELO  
 MODEL 1 YEAR 2012  
 OWNER STEFANO PENZO COUNTRY ITALY

BARE HULL   
 HULL MATERIAL: WOOD   
 DECK MATERIAL: WOOD

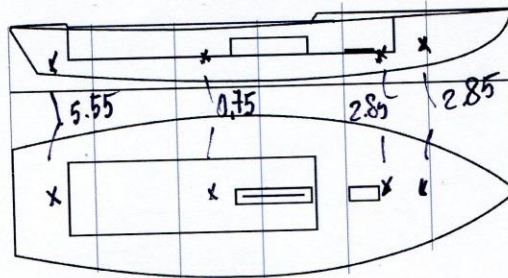
COMPLETE  from certified mould   
 FIBERGLASS   
 FIBERGLASS

INCOMPLETE   
 make note of  
 incomplete items

HULL WEIGHT (MIN 125KG)   
 TOTAL WEIGHT (172.8KG)   
 BALLAST (MAX 15KG mark below)  12  
 MOI   
 JIB FITTING (279-330 dist. from pt 0)  283  
 SHROUDS (1778-1981mm dist. from pt. 0)   
 UPPER GUDGEON (410+/-3MM)   
 LOWER GUDGEON (155 +/-3MM)   
 MAST HOLE (1494mm dist. from pt. 0)   
 TRUNK HEIGHT (310 -0+3MM)  311

MAST LENGTH (6499MM)   
 Limiting bands & pin   
 BOOM LENGTH (2642MM from aft edge of mast)   
 Limiting bands   
 POLE LENGTH (2642MM)   
 RUDDER DIMENSIONS   
 RUDDER WEIGHT (2.72kg)   
 Fits the Transom (Y/N)   
 CENTERBOARD DIMENSIONS   
 Band   
 Restraining System & stoppers

Mark ballast here



DATE MEASURED... 06.08.2012

MEASURER'S SIGNATURE .....

*[Handwritten Signature]*

MEASURER'S STAMP.....

**01 SCIRA**  
**MEASURER**  
**ITALY**

NOTES:

**Both pages must be completed and sent to the SCIRA office upon completion of measurement except if hull is from a certified mould.**

# SCIRA Measurement Check Sheet

To be used with the 80/20 true baseline measurement frame

Owner: STEFANO PENZO Date: 06.08.2019

Hull # 31080 Builder: LO ZELO Material: F.G.

## Chines Height

Station	Starboard	Port	Total	Allowable Range	Width	Allowable Range
1			834	838-864		527-540
2			741	724-749		991-1003
3			673	673-699		1232-1245
4			687	680-705		1270-1283
5			769	762-787		1137-1149
Transom			ok	902-927		952-965

## Sheer

Station	Starboard	Port	Total	Allowable Range	Width	Allowable Range
1			1539	1499-1549	893	895-921
2			1441	1391-1441	1355	346-1372
3			1367	1333-1384	1525	1511-1537
4			1354	1321-1372	1488	1473-1499
5			1360	1321-1372	1283	1270-1295
Transom			ok	1384-1435	1042	1022-1048

## Keel

400mm	Height	Width
1	ok	82
2	ok	102
3	ok	102
4	ok	102
5	ok	102
Transom	170	102

## Rudder

Weight	2.72kg	✓
Shape		✓
Thickness		✓
Lock		✓
Keel Ext.		✓

## Daggerboard

Bottom	✓
Shape	✓
Thickness	✓
Stripe	✓
Punch mark	✓
Tapers	✓

Horizontal Transom Offset 203-229 LOA 4711-4737 4730

Weight 172.8 Ballast (lead) 12 MOI >27.6 ok  
 Mast Boom Bow

Band loc	✓
Length <6499mm	✓
Limiting pin	✓
Sheer mark	✓
Weight/bal 9.1kg	✓

Band loc 2559mm	✓
Limiting pin	✓
Max Length <2642mm	✓
Pole length <2642mm	✓

Stem height 683-708	700
Bow radius	ok

## Topside Measurements

Aft end of Trunk 2438-2464 from stem	✓	Length of daggerboard slot	✓
Top of trunk parallel to baseline	✓	Width of daggerboard slot	✓
Aft edge of trunk perpendicular to baseline	✓	Stem to mast partner >1494	✓
Keel to top of trunk 310-313	311	Length of foredeck >1842	✓
Shroud fitting to stem 1778-1981	✓	Length of aft deck >457	✓
Mast step to sheer (vertical) 390-400	400	Headstay to stem 279-330	283

Measurer [Signature]

**01 SCIRA**  
**MEASUREP**  
**ITALY**

No. 1067

Snipe Class International Racing Association  
MEASUREMENT CERTIFICATE

Hull number 31080 Year of manufacturer 2012

Builder LOZELO Model # 1

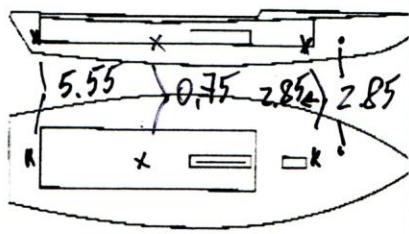
Owner STEFANO PENZO

Country ITALY Mark ballast here

Weight 172.8

Ballast 12

MOI 727.6



Measurer/s GIORGIO BREZICHI

Date of measurement 06.08.2012

Measurer or National Secretary stamp and signature  **SCIR. MEASURER ITALY**

I hereby agree to all SCIRA rules and by-laws. I agree to notify SCIRA measurer if any equipment modified, replaced and/or transferred.  
SCIRA reserves the right to measure this boat and any equipment a any time.

Owner signature \_\_\_\_\_

Date \_\_\_\_\_

THIS CERTIFICATE REMAINS WITH THE OWNER OF THIS SNIPE. IT CAN BE REPLACED BY REMEASUREMENT.