

**Snipe Class International Racing Association
MEASUREMENT CERTIFICATE**

Hull number 31083 Year of manufacturer 2012

Builder DB MARINE Model # MK.V

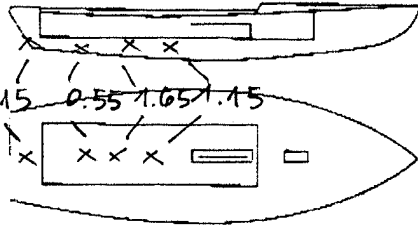
Owner COMITÈ OLIMPICO PERUANO

Country PERU Mark ballast here

Weight 172.8

Ballast 4.5 1.15 0.55 1.65 1.15

MOI >27.6



Measurer/s GIORGIO BREZICH

Date of measurement JULY 25 2012

Measurer or National Secretary stamp and signature  **01 SCIRA MEASURER ITALY**

I hereby agree to all SCIRA rules and by-laws. I agree to notify a SCIRA measurer if any equipment modified, replaced and/or transferred.
SCIRA reserves the right to measure this boat and any equipment at any time.

Owner signature _____

Date _____

THIS CERTIFICATE REMAINS WITH THE OWNER OF THIS SNIPE. IT CAN BE REPLACED BY REMEASUREMENT.

SNIPER CLASS RACING ASSOCIATION

MEASUREMENT DATA SHEET Sheet I- revised January 2009 For boats built after January 1, 2009

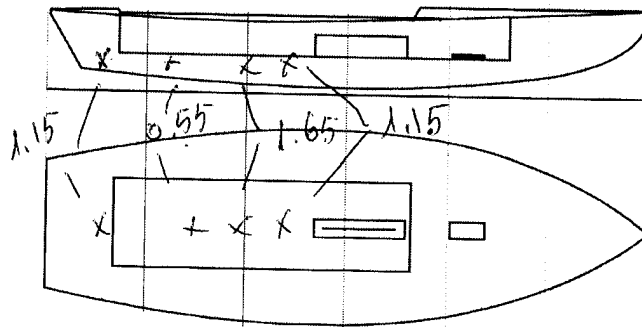
HULL NUMBER 31083 BUILDER DB MARINE
 MODEL MK V YEAR 2012
 OWNER COMITÉ OLIMPICO PERUANO COUNTRY PERU

BARE HULL COMPLETE from certified mould INCOMPLETE
 HULL MATERIAL: WOOD FIBERGLASS make note of
 DECK MATERIAL: WOOD FIBERGLASS incomplete items

HULL WEIGHT (MIN 125KG)
 TOTAL WEIGHT (172.8KG)
 BALLAST (MAX 15KG mark below) 4.5
 MOI
 JIB FITTING (279-330 dist. from pt 0) 286
 SHROUDS (1778-1981mm dist. from pt. 0) 1781
 UPPER GUDGEON (410+/-3MM) 410
 LOWER GUDGEON (155 +/-3MM) 155
 MAST HOLE (1494mm dist. from pt. 0)
 TRUNK HEIGHT (310 -0+3MM) 313

MAST LENGTH (6499MM)
 Limiting bands & pin
 BOOM LENGTH (2642MM from aft edge of mast)
 Limiting bands
 POLE LENGTH (2642MM)
 RUDDER DIMENSIONS
 RUDDER WEIGHT (2.72kg) 2.85
 Fits the Transom (Y/N)
 CENTERBOARD DIMENSIONS
 Band
 Restraining System & stoppers

Mark ballast here



DATE MEASURED 25.07.2012

MEASURER'S SIGNATURE GIORGIO BREZICH

MEASURER'S STAMP

01 SCIRA
MEASUREP
ITALY

NOTES:

Both pages must be completed and sent to the SCIRA office upon completion of measurement except if hull is from a certified mould.

546
153
393

SCIRA Measurement Check Sheet

To be used with the 80/20 true baseline measurement frame

Owner: COMITÉ OLIMPICO PERUANO Date: 25.07.2012

Hull # 31083 Builder: DB MARINE Material: FG.

Chines Height

Station	Starboard	Port	Total	Allowable Range	Width	Allowable Range
1				838-864		527-540
2				724-749		991-1003
3				673-699		1232-1245
4				680-705		1270-1283
5				762-787		1137-1149
Transom				902-927		952-965

Sheer

Station	Starboard	Port	Total	Allowable Range	Width	Allowable Range
1				1499-1549		895-921
2				1391-1441		346-1372
3				1333-1384		1511-1537
4				1321-1372		1473-1499
5				1321-1372		1270-1295
Transom				1384-1435		1022-1048

Keel

	Height	Width
400mm		
1		
2		
3		
4		
5		
Transom		

Rudder

Weight	2.72kg	2.85
Shape		
Thickness		
Lock		
Keel Ext.		

Daggerboard

Bottom	
Shape	
Thickness	
Stripe	
Punch mark	
Tapers	

Horizontal Transom Offset 203-229 LOA 4711-4737

Weight 172.8 Ballast (lead) 4.5 MOI > 27.6 ok

Band loc	
Length <6499mm	
Limiting pin	
Sheer mark	
Weight/bal 9.1kg	

Band loc 2559mm	
Limiting pin	
Max Length <2642mm	
Pole length <2642mm	

Stem height 683-708	
Bow radius	

Topside Measurements

Aft end of Trunk 2438-2464 from stem	✓	Length of daggerboard slot	✓
Top of trunk parallel to baseline	✓	Width of daggerboard slot	12
Aft edge of trunk perpendicular to baseline	✓	Stem to mast partner >1494	ok
Keel to top of trunk 310-313	313	Length of foredeck >1842	✓
Shroud fitting to stem 1778-1981	1781	Length of aft deck >457	✓
Mast step to sheer (vertical) 390-400	393	Headstay to stem 279-330	286

Measurer GIORGIO BREZICIA

52.05
52.15
52.12

