

DB R1

31094

SNIPE CLASS RACING ASSOCIATION

MEASUREMENT DATA SHEET Sheet I- revised January 2009 For boats built after January 1, 2009

HULL NUMBER 31094 BUILDER DB MARINE

MODEL DB-R1 YEAR 2012

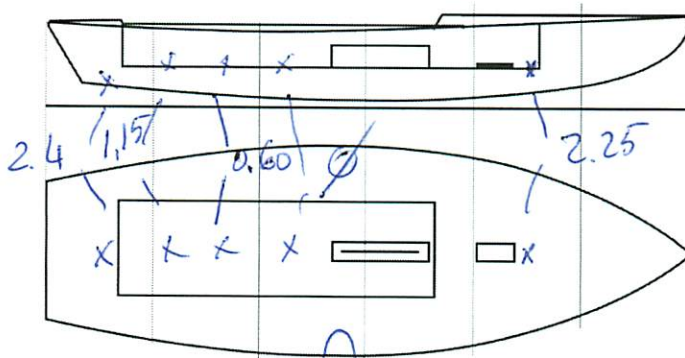
OWNER SAIL FAST COUNTRY JAPAN

BARE HULL COMPLETE from certified mould INCOMPLETE
 HULL MATERIAL: WOOD FIBERGLASS *make note of*
 DECK MATERIAL: WOOD FIBERGLASS *incomplete items*

HULL WEIGHT (MIN 125KG)
 TOTAL WEIGHT (172.8KG)
 BALLAST (MAX 15KG mark below) 6.4
 MOI
 JIB FITTING (279-330 dist. from pt 0) 282
 SHROUDS (1778-1981mm dist. from pt. 0) 1781
 UPPER GUDGEON (410+/-3MM) 411
 LOWER GUDGEON (155 +/-3MM) 156
 MAST HOLE (1494mm dist. from pt. 0)
 TRUNK HEIGHT (310 -0+3MM) 313

MAST LENGTH (6499MM)
 Limiting bands & pin
 BOOM LENGTH (2642MM from aft edge of mast)
 Limiting bands
 POLE LENGTH (2642MM)
 RUDDER DIMENSIONS
 RUDDER WEIGHT (2.72kg) 3.0
 Fits the Transom (Y/N)
 CENTERBOARD DIMENSIONS
 Band
 Restraining System & stoppers

Mark ballast here



DATE MEASURED 09.10.2012

MEASURER'S SIGNATURE [Signature]

MEASURER'S STAMP

NOTES:

Both pages must be completed and sent to the SCIRA office upon completion of measurement except if hull is from a certified mould.

SCIRA Measurement Check Sheet

To be used with the 80/20 true baseline measurement frame

Owner: SAIL FAST - JAPAN Date: 09/10/2012

Hull # 31094 Builder: DB MARINE Material: F.G.
 Chines Height

Station	Starboard	Port	Total	Allowable Range	Width	Allowable Range
1				838-864		527-540
2				724-749		991-1003
3				673-699		1232-1245
4				680-705		1270-1283
5				762-787		1137-1149
Transom				902-927		952-965

Sheer

Station	Starboard	Port	Total	Allowable Range	Width	Allowable Range
1				1499-1549		895-921
2				1391-1441		346-1372
3				1333-1384		1511-1537
4				1321-1372		1473-1499
5				1321-1372		1270-1295
Transom				1384-1435		1022-1048

Keel

	Height	Width
400mm		
1		
2		
3		
4		
5		
Transom		

Rudder

Weight	2.72kg	3.0
Shape		✓
Thickness		✓
Lock		✓
Keel Ext.		✓

Daggerboard

Bottom	✓
Shape	✓
Thickness	✓
Stripe	✓
Punch mark	✓
Tapers	✓

Horizontal Transom Offset 203-229 LOA 4711-4737

Weight 172.8 Ballast (lead) 6.4 MOI >27.6 ok

52.10
52.07
52.65

Mast

Band loc	✓
Length <6499mm	✓
Limiting pin	✓
Sheer mark	✓
Weight/bal 9.1kg	✓

Boom

Band loc 2559mm	✓
Limiting pin	✓
Max Length <2642mm	✓
Pole length <2642mm	✓

Bow

Stem height 683-708	✓
Bow radius	✓

Topside Measurements

Aft end of Trunk 2438-2464 from stem	✓	Length of daggerboard slot	ok
Top of trunk parallel to baseline	✓	Width of daggerboard slot	12
Aft edge of trunk perpendicular to baseline	✓	Stem to mast partner >1494	ok
Keel to top of trunk 310-313	313	Length of foredeck >1842	ok
Shroud fitting to stem 1778-1981	1781	Length of aft deck >457	ok
Mast step to sheer (vertical) 390-400	390	Headstay to stem 279-330	282

Measurer GIORGIO BREZICH

計測証明書

登録番号 No. **31094**

新規計測・再計測

- 1. 所有者 氏名 **トヨタ自動車(株)**
住所 **愛知県豊田市トヨタ町藩地**
- 2. 建造者 氏名 **DBマリン**
住所

上記は本協会登録計測証であることを証明する。

日本スナイプ協会

計測年月日 **2012年10月9日**

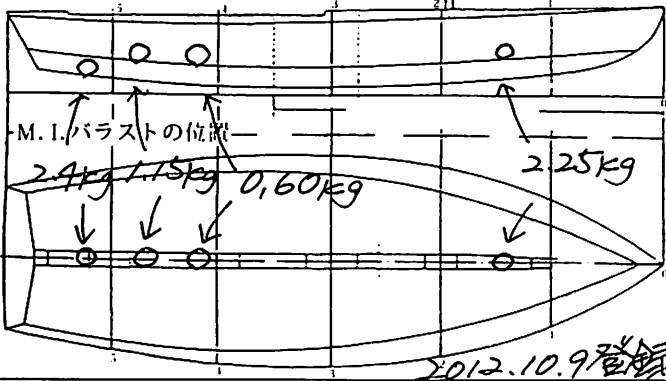
計測員

署名

百瀬信彦



材質 重量 **172.8 kg** バラスト **6.4 kg**



備考

輸入艇に付き国内新規登録

計測証明書の再発行 (~~移籍~~、紛失)

2013年4月7日 発行者氏名 **百瀬信彦**



新規計測と再計測のどちらかを消す。
再計測証明書は、新規計測書に重ねて綴る。