

SNIPE CLASS RACING ASSOCIATION

MEASUREMENT DATA SHEET Sheet I- revised January 2009 For boats built after January 1, 2009

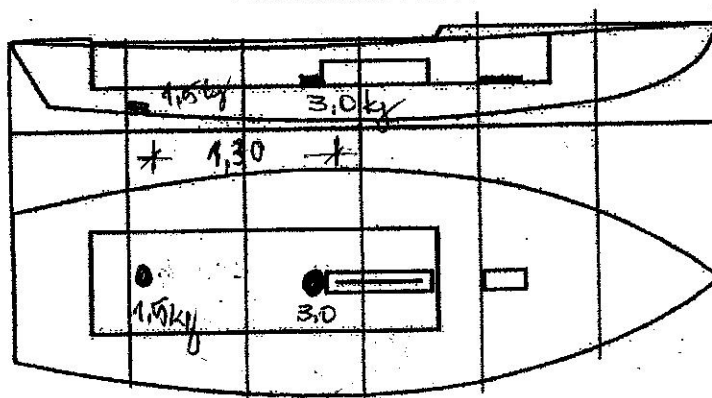
HULL NUMBER 3120Z BUILDER DIEMER
 MODEL _____ YEAR 2013
 OWNER IVAN PIMENTEL COUNTRY Brazil

BARE HULL COMPLETE from certified mould INCOMPLETE
 HULL MATERIAL: WOOD FIBERGLASS make note of
 DECK MATERIAL: WOOD FIBERGLASS incomplete items

HULL WEIGHT (MIN 125KG)
 TOTAL WEIGHT (172.8KG)
 BALLAST (MAX 15KG mark below)
 MOI
 JIB FITTING (279-330 dist. from pt. 0)
 SHROUDS (1778-1981mm dist. from pt. 0)
 UPPER GUDGEON (410+/-3MM)
 LOWER GUDGEON (155 +/-3MM)
 MAST HOLE (1494mm dist. from pt. 0)
 TRUNK HEIGHT (310 -0+3MM)

MAST LENGTH (6499MM)
 Limiting bands & pin
 BOOM LENGTH (2642MM from aft edge of mast)
 Limiting bands
 POLE LENGTH (2642MM)
 RUDDER DIMENSIONS
 RUDDER WEIGHT (2.72kg)
 Fits the Transom (Y/N)
 CENTERBOARD DIMENSIONS
 Band
 Restraining System & stoppers

Mark ballast here



DATE MEASURED 07/01/2013

MEASURER'S SIGNATURE [Signature]

MEASURER'S STAMP **01 SCIRA MEASURER BRAZIL**

NOTES:

Both pages must be completed and sent to the SCIRA office upon completion of measurement except if hull is from a certified mould.

SCIRA Measurement Check Sheet

To be used with the 80/20 true baseline measurement frame

Owner: JUAN PIMENTEL Date: 07/04/2013

Hull # 31202 Builder: DIEMER Material: FG

Chines Height

Station	Starboard	Port	Total	Allowable Range	Width	Allowable Range
1	425	427	852	838-864	528	527-540
2	344	375	719	724-749	892	991-1003
3	343	344	687	673-699	1233	1232-1245
4	339	343	682	680-705	1271	1270-1283
5	383	381	764	762-787	1138	1137-1149
Transom	496	493	909	902-927	872	952-965

Sheer

Station	Starboard	Port	Total	Allowable Range	Width	Allowable Range
1	770	777	1547	1499-1549	921	895-921
2	716	714	1430	1391-1441	1363	1346-1372
3	690	692	1382	1333-1384	1532	1511-1537
4	670	669	1339	1321-1372	1474	1473-1499
5	673	674	1347	1321-1372	1271	1270-1295
Transom	684	696	1380	1364-1435	1022	1023-1048

Keel

	Height	Width
400mm	✓	✓
1	✓	✓
2	✓	✓
3	✓	✓
4	✓	✓
5	✓	✓
Transom	✓	✓

Rudder

Weight	2.72kg	✓
Shape		✓
Thickness		✓
Lock		✓
Keel Ext.		✓

Daggerboard

Bottom	✓
Shape	✓
Thickness	✓
Stripe	✓
Punch mark	✓
Tapers	✓

Horizontal Transom Offset 203-229 ✓ LOA 4711-4737 ✓

Weight 172.8 kg Mast Ballast (lead) 4.5 kg MOI >27.6 27.95 slug/ft²
 Boom Bow

Band loc	✓
Length <6499mm	✓
Limiting pin	✓
Sheer mark <u>394</u>	✓
Weight/bal 9.1kg	✓

Band loc 2559mm	✓
Limiting pin	✓
Max Length <2642mm	✓
Pole length <2642mm	✓

Stem height 683-708	✓
Bow radius	✓

Topside Measurements

Aft end of Trunk 2438-2464 from stem	✓	Length of daggerboard slot	✓
Top of trunk parallel to baseline	✓	Width of daggerboard slot	✓
Aft edge of trunk perpendicular to baseline	✓	Stem to mast partner >1494	✓
Keel to top of trunk 310-313 <u>311</u>	✓	Length of foredeck >1842	✓
Shroud fitting to stem 1778-1981	✓	Length of aft deck >457	✓
Mast step to sheer (vertical) 390-400 <u>394</u>	✓	Headstay to stem 279-330	✓

Measurer [Signature]