

# SCIRTA CLASS RACING ASSOCIATION

## MEASUREMENT DATA SHEET Sheet I- revised January 2009 For boats built after January 1, 2007

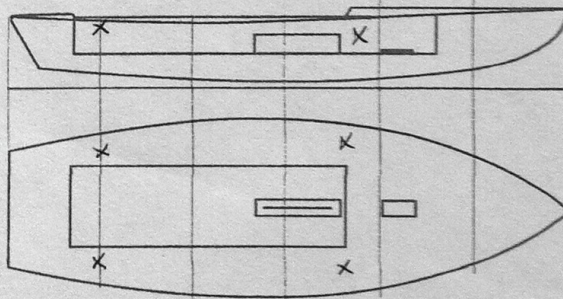
HULL NUMBER 31204 BUILDER JULETECH  
 MODEL MK III YEAR 2013  
 OWNER RAY SCHMIDT COUNTRY USA

BARE HULL  COMPLETE  from certified mould  INCOMPLETE   
 HULL MATERIAL: WOOD  FIBERGLASS  make note of  
 DECK MATERIAL: WOOD  FIBERGLASS  incomplete items

HULL WEIGHT (MIN 125KG)   
 TOTAL WEIGHT (172.8KG)   
 BALLAST (MAX 15KG mark below)   
 MOI   
 JIB FITTING (279-330 dist. from pt 0)   
 SHROUDS (1778-1981mm dist. from pt. 0)   
 UPPER GUDGEON (410+/-3MM)   
 LOWER GUDGEON (155 +/-3MM)   
 MAST HOLE (1494mm dist. from pt. 0)   
 TRUNK HEIGHT (310 -0+3MM)

MAST LENGTH (6499MM)   
 Limiting bands & pin   
 BOOM LENGTH (2642MM from aft edge of mast)   
 Limiting bands   
 POLE LENGTH (2642MM)   
 RUDDER DIMENSIONS   
 RUDDER WEIGHT (2.72kg)   
 Fits the Transom (Y/N)   
 CENTERBOARD DIMENSIONS   
 Band   
 Restraining System & stoppers

Mark ballast here



DATE MEASURED 6/17/2013  
 MEASURER'S SIGNATURE [Signature]  
 MEASURER'S STAMP \_\_\_\_\_

NOTES:

**Both pages must be completed and sent to the SCIRA office upon completion of measurement except if hull is from a certified mould.**

# SCIRA Measurement Check Sheet

To be used with the 80/20 true baseline measurement frame

Owner: RAY SCHMIST Date: 6/12/2013

Hull # 31204 Builder: JIBTECH Material: FG

Chines		Height		Width		Allowable Range	
Station	Starboard	Port	Total	Allowable Range	Width	Allowable Range	
1	417	422	839	838-864	534	-	527-540
2	364	363	727	724-749	1003		991-1003
3	338	335	673	673-699	1244		1232-1245
4	341	339	680	680-705	1276		1270-1283
5	390	375	765	762-787	1148		1137-1149
Transom	488	446	904	902-927	964		952-965

Sheer		Height		Width		Allowable Range	
Station	Starboard	Port	Total	Allowable Range	Width	Allowable Range	
1	758	784	1542	1499-1549	910		895-921
2	718	711	1429	1391-1441	1370		346-1372
3	692	685	1377	1333-1384	1531		1511-1537
4	682	679	1361	1321-1372	1492		1473-1499
5	685	677	1362	1321-1372	1292		1270-1295
Transom	706	685	1385	1384-1435	1048		1022-1048

Keel	Height		Width
	Starboard	Port	
400mm	✓	✓	✓
1	✓	✓	✓
2	✓	✓	✓
3	✓	✓	✓
4	✓	✓	✓
5	✓	✓	✓
Transom	✓	✓	✓

Rudder	
Weight	2.72kg
Shape	
Thickness	
Lock	
Keel Ext.	

Daggerboard	
Bottom	
Shape	
Thickness	
Stripe	
Punch mark	
Tapers	

Horizontal Transom Offset 203-229 ✓ LOA 4711-4737 ✓

Weight 381 Ballast (lead) 20 lbs. 5 PLS CHAMPAGNE MOI >27.6 52.1 (27.86)

Mast	
Band loc	
Length <6499mm	
Limiting pin	
Sheer mark	
Weight/bal 9.1kg	

Boom	
Band loc 2559mm	
Limiting pin	
Max Length <2642mm	
Pole length <2642mm	

Bow	
Stem height 683-708	✓
Bow radius	✓

## Topside Measurements

Aft end of Trunk 2438-2464 from stem	✓	Length of daggerboard slot	✓
Top of trunk parallel to baseline	✓	Width of daggerboard slot	✓
Aft edge of trunk perpendicular to baseline	✓	Stem to mast partner >1494	✓
Keel to top of trunk 310-313	✓	Length of foredeck >1842	✓
Shroud fitting to stem 1778-1981	✓	Length of aft deck >457	✓
Mast step to sheer (vertical) 390-400	✓	Headstay to stem 279-330	✓

Measurer [Signature]