

Snipe Class International Racing Association
MEASUREMENT CERTIFICATE

Hull number 31265 Year of manufacturer 2014

Builder DB MARINE Model # DB-R1

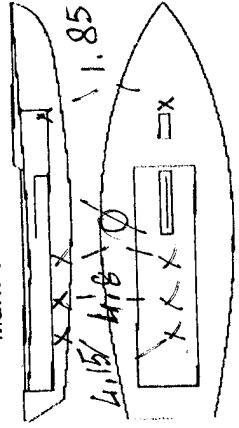
Owner ENRICO SOLERIO

Country ITALY Mark ballast here

Weight 172.8

Ballast 10.5

MOI 27.6



Measurer's GIORGIO BREICH

Date of measurement 28/10/2014

Measurer or National Secretary stamp and signature [Signature]

I hereby agree to all SCIRA rules and by-laws. I agree to notify a SCIRA measurer if any equipment modified, replaced and or transferred.
SCIRA reserves the right to measure this boat and any equipment at any time.

Owner signature _____

Date _____
THIS CERTIFICATE REMAINS WITH THE OWNER OF THIS SNIPE. IT CAN BE REPLACED BY REMEASUREMENT.

SCIRA Measurement Check Sheet

To be used with the 80/20 true baseline measurement frame

Owner: SOLERIO - ENRICO Date: 28/10/2014

Hull # 31265 Builder: DB MARINE Material: FR

Chines Height

Station	Starboard	Port	Total	Allowable Range	Width	Allowable Range
1				838-864		527-540
2				724-749		991-1003
3				673-699		1232-1245
4				680-705		1270-1283
5				762-787		1137-1149
Transom				902-927		952-965

Sheer

Station	Starboard	Port	Total	Allowable Range	Width	Allowable Range
1				1499-1549		895-921
2				1391-1441		346-1372
3				1333-1384		1511-1537
4				1321-1372		1473-1499
5				1321-1372		1270-1295
Transom				1384-1435		1022-1048

Keel

	Height	Width
400mm		
1		
2		
3		
4		
5		
Transom		

Rudder

Weight	2.72kg	2.9
Shape		✓
Thickness		✓
Lock		✓
Keel Ext.		✓

Daggerboard

Bottom	✓
Shape	✓
Thickness	✓
Stripe	✓
Punch mark	✓
Tapers	✓

Horizontal Transom Offset 203-229 ✓ LOA 4711-4737 ✓

Weight 172.8 Mast 172.8 Ballast (lead) 10.8 MOI >27.6 OK

Boom

Band loc	2559mm	✓
Limiting pin		✓
Max Length	<2642mm	✓
Pole length	<2642mm	✓

Bow

Stem height	683-708	✓
Bow radius		✓

Band loc	✓
Length <6499mm	✓
Limiting pin	✓
Sheer mark	✓
Weight/bal 9.1kg	✓

Topside Measurements

Aft end of Trunk 2438-2464 from stem	✓	Length of daggerboard slot	✓
Top of trunk parallel to baseline	✓	Width of daggerboard slot	12
Aft edge of trunk perpendicular to baseline	✓	Stem to mast partner >1494	✓
Keel to top of trunk 310-313	312	Length of foredeck >1842	✓
Shroud fitting to stem 1778-1981	1783	Length of aft deck >457	✓
Mast step to sheer (vertical) 390-400	395	Headstay to stem 279-330	280

Measurer GIORGIO BREZICH

SCIRA
MEASURER
ITALY

52.06
52.09
52.05

SNIPE CLASS RACING ASSOCIATION

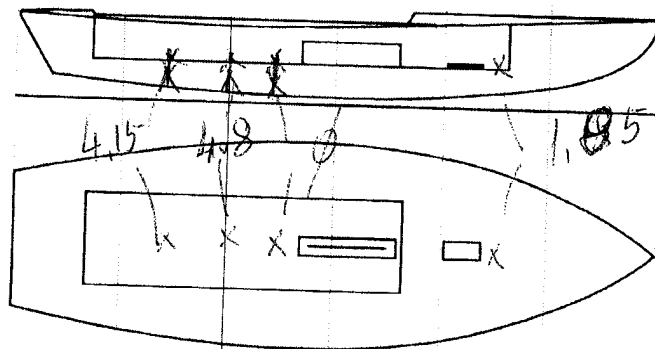
MEASUREMENT DATA SHEET Sheet I- revised January 2009 For boats built after January 1, 2009

HULL NUMBER 31265 BUILDER DB MARINE SAS
 MODEL DB-R1 YEAR 2014
 OWNER SOLE R10 ENRICO COUNTRY ITALY

BARE HULL COMPLETE from certified mould INCOMPLETE
 HULL MATERIAL: WOOD FIBERGLASS make note of
 DECK MATERIAL: WOOD FIBERGLASS incomplete items

HULL WEIGHT (MIN 125KG)
 TOTAL WEIGHT (172.8KG) +10.8
 BALLAST (MAX 15KG mark below) 10.8
 MOI
 JIB FITTING (279-330 dist. from pt 0) 280
 SHROUDS (1778-1981mm dist. from pt. 0) 1783
 UPPER GUDGEON (410 +/-3MM)
 LOWER GUDGEON (155 +/-3MM)
 MAST HOLE (1494mm dist. from pt. 0)
 TRUNK HEIGHT (310 -0+3MM)
 MAST LENGTH (6499MM)
 Limiting bands & pin
 BOOM LENGTH (2642MM from aft edge of mast)
 Limiting bands
 POLE LENGTH (2642MM)
 RUDDER DIMENSIONS
 RUDDER WEIGHT (2.72kg) 2.9
 Fits the Transom (Y/N)
 CENTERBOARD DIMENSIONS
 Band
 Restraining System & stoppers

Mark ballast here



DATE MEASURED 28.10.2014
 MEASURER'S SIGNATURE [Signature]
 MEASURER'S STAMP SCIRA MEASURER ITALY

NOTES:

Both pages must be completed and sent to the SCIRA office upon completion of measurement except if hull is from a certified mould.