

SNIPE CLASS RACING ASSOCIATION

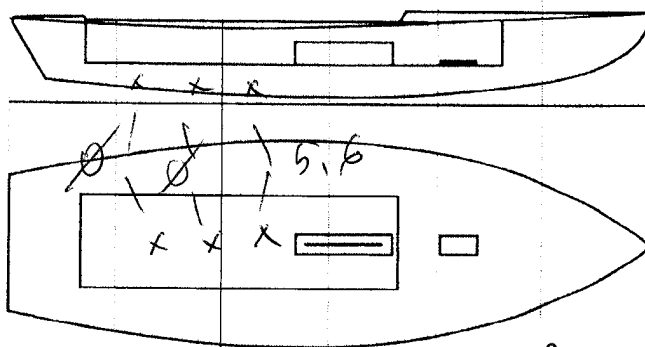
MEASUREMENT DATA SHEET Sheet I- revised January 2009 For boats built after January 1, 2009

HULL NUMBER 31314 BUILDER DB MARINE SAS
 MODEL DB-R1 YEAR 2015
 OWNER HORTEN SEL FORENING COUNTRY NORWAY

BARE HULL COMPLETE from certified mould INCOMPLETE
 HULL MATERIAL: WOOD FIBERGLASS *make note of*
 DECK MATERIAL: WOOD FIBERGLASS *incomplete items*

HULL WEIGHT (MIN 125KG)	<input checked="" type="checkbox"/>	MAST LENGTH (6499MM)	<input type="checkbox"/>
TOTAL WEIGHT (172.8KG)	<input checked="" type="checkbox"/>	Limiting bands & pin	<input type="checkbox"/>
BALLAST (MAX 15KG mark below)	<input type="checkbox"/>	BOOM LENGTH (2642MM from aft edge of mast)	<input type="checkbox"/>
MOI	<input checked="" type="checkbox"/>	Limiting bands	<input type="checkbox"/>
JIB FITTING (279-330 dist. from pt 0)	<input type="checkbox"/> 281	POLE LENGTH (2642MM)	<input type="checkbox"/>
SHROUDS (1778-1981mm dist. from pt. 0)	<input type="checkbox"/> 1783	RUDDER DIMENSIONS	<input checked="" type="checkbox"/>
UPPER GUDGEON (410+/-3MM)	<input type="checkbox"/> 410	RUDDER WEIGHT (2.72kg)	<u>2.8</u> <input type="checkbox"/>
LOWER GUDGEON (155 +/-3MM)	<input type="checkbox"/> 157	Fits the Transom (Y/N)	<input checked="" type="checkbox"/>
MAST HOLE (1494mm dist. from pt. 0)	<input type="checkbox"/> +3	CENTERBOARD DIMENSIONS	<input type="checkbox"/>
TRUNK HEIGHT (310 -0+3MM)	<input type="checkbox"/> 311	Band	<input type="checkbox"/>
		Restraining System & stoppers	<input type="checkbox"/>

Mark ballast here



DATE MEASURED 20/05/2015
 MEASURER'S SIGNATURE GIORGIO BREZICH
 MEASURER'S STAMP.....

NOTES:

SCIRA
 MEASURER
 ITALY

Both pages must be completed and sent to the SCIRA office upon completion of measurement except if hull is from a certified mould.

SCIRA Measurement Check Sheet

To be used with the 80/20 true baseline measurement frame

Owner: HORTEN SEILFORBENING Date: 20/05/2015

Hull # 31314 Builder: DB MARINE SAS Material: FB

Chines Height

Station	Starboard	Port	Total	Allowable Range	Width	Allowable Range
1				838-864		527-540
2				724-749		991-1003
3				673-699		1232-1245
4				680-705		1270-1283
5				762-787		1137-1149
Transom				902-927		952-965

Sheer

Station	Starboard	Port	Total	Allowable Range	Width	Allowable Range
1				1499-1549		895-921
2				1391-1441		346-1372
3				1333-1384		1511-1537
4				1321-1372		1473-1499
5				1321-1372		1270-1295
Transom				1384-1435		1022-1048

Keel

	Height	Width
400mm		
1		
2		
3		
4		
5		
Transom		

Rudder

Weight	2.72kg	2.8
Shape		✓
Thickness		✓
Lock		✓
Keel Ext.		✓

Daggerboard

Bottom	✓
Shape	✓
Thickness	✓
Stripe	✓
Punch mark	✓
Tapers	✓

Horizontal Transom Offset 203-229 ✓ LOA 4711-4737 ✓

Weight 172.8 Ballast (lead) 5.6 MOI >27.6 ✓

Mast

Band loc	
Length <6499mm	
Limiting pin	
Sheer mark	
Weight/bal 9.1kg	

Boom

Band loc 2559mm	
Limiting pin	
Max Length <2642mm	
Pole length <2642mm	

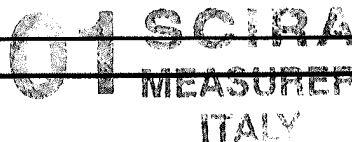
Bow

Stem height 683-708	✓
Bow radius	✓

Topside Measurements

Aft end of Trunk 2438-2464 from stem	✓	Length of daggerboard slot	✓
Top of trunk parallel to baseline	✓	Width of daggerboard slot	12
Aft edge of trunk perpendicular to baseline	✓	Stem to mast partner >1494	+ 3 1/2
Keel to top of trunk 310-313	311	Length of foredeck >1842	✓
Shroud fitting to stem 1778-1981	1783	Length of aft deck >457	✓
Mast step to sheer (vertical) 390-400	393	Headstay to stem 279-330	281

Measurer GIORGIO BREZICH



52.61
52.57