

Snipe Class International Racing Association
MEASUREMENT CERTIFICATE

Hull number 31325 Year of manufacturer 2015

Builder DB MARINE Model # DB R1

Owner DB MARINE

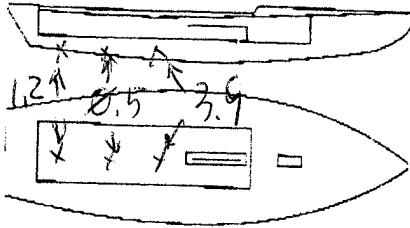
Country ITALY

Mark ballast here

Weight 172.8

Ballast 5.6

MOI 27.6



Measurer's GEORGIO BREZICH

Date of measurement 09.09.2015

Measurer or National Secretary stamp and signature  

I hereby agree to all SCIRA rules and by-laws. I agree to notify SCIRA measurer if any equipment modified, replaced and/or transferred.

SCIRA reserves the right to measure this boat and any equipment a any time.

Owner signature _____

Date _____

THIS CERTIFICATE REMAINS WITH THE OWNER OF THIS
SNIPE. IT CAN BE REPLACED BY REMEASUREMENT.

SCIRA Measurement Check Sheet

To be used with the 80/20 true baseline measurement frame

Owner: DB MARINE

Date: 09.09.2015

Hull # 31325

Builder: DB MARINE

Material: FIBERGLASS

Chines Height

Station	Starboard	Port	Total	Allowable Range	Width	Allowable Range
1				838-864		527-540
2				724-749		991-1003
3				673-699		1232-1245
4				680-705		1270-1283
5				762-787		1137-1149
Transom				902-927		952-965

Sheer

Station	Starboard	Port	Total	Allowable Range	Width	Allowable Range
1				1499-1549		895-921
2				1391-1441		346-1372
3				1333-1384		1511-1537
4				1321-1372		1473-1499
5				1321-1372		1270-1295
Transom				1384-1435		1022-1048

Keel

	Height	Width
400mm		
1		
2		
3		
4		
5		
Transom		

Rudder

Weight	3.0
2.72kg	
Shape	✓
Thickness	✓
Lock	✓
Keel Ext.	✓

Daggerboard

Bottom	✓
Shape	✓
Thickness	✓
Stripe	✓
Punch mark	✓
Tapers	✓

Horizontal Transom Offset 203-229

LOA 4711-4737

Weight 172.8

Ballast (lead) 5.6

MOI > 27.6 ok

Mast

Band loc	✓
Length < 6499mm	✓
Limiting pin	✓
Sheer mark	✓
Weight/bal 9.1kg	✓

Boom

Band loc 2559mm	✓
Limiting pin	✓
Max Length < 2642mm	✓
Pole length < 2642mm	✓

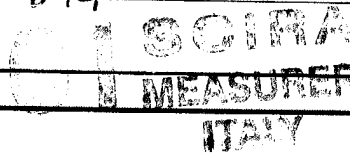
Bow

Stem height 683-708	
Bow radius	

Topside Measurements

Aft end of Trunk 2438-2464 from stem	✓	Length of daggerboard slot	✓
Top of trunk parallel to baseline	✓	Width of daggerboard slot	124
Aft edge of trunk perpendicular to baseline	✓	Stem to mast partner > 1494	+ 104
Keel to top of trunk 310-313	310	Length of foredeck > 1842	✓
Shroud fitting to stem 1778-1981	1784	Length of aft deck > 457	✓
Mast step to sheer (vertical) 390-400	394	Headstay to stem 279-330	282

Measurer [Signature]



SNIPE CLASS RACING ASSOCIATION

MEASUREMENT DATA SHEET
 Sheet I- revised January 2009
 For boats built after January 1, 2009

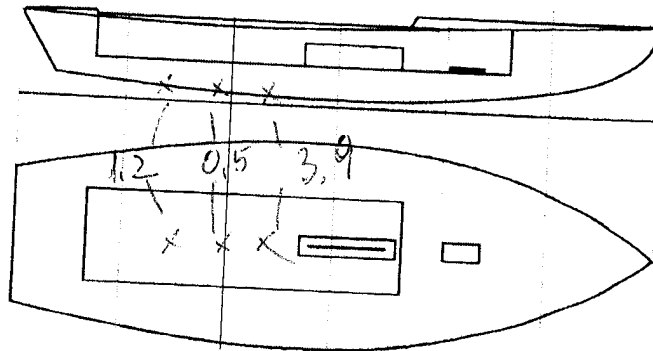
HULL NUMBER 31325 BUILDER DB MARINE
 MODEL DBR1 YEAR 2015
 OWNER DB MARINE COUNTRY ITALY

BARE HULL COMPLETE from certified mould INCOMPLETE
 HULL MATERIAL: WOOD FIBERGLASS make note of
 DECK MATERIAL: WOOD FIBERGLASS incomplete items

HULL WEIGHT (MIN 125KG)
 TOTAL WEIGHT (172.8KG)
 BALLAST (MAX 15KG mark below) 5.6
 MOI
 JIB FITTING (279-330 dist. from pt 0) 282
 SHROUDS (1778-1981mm dist. from pt. 0) 1785
 UPPER GUDGEON (410+/-3MM) 410
 LOWER GUDGEON (155 +/-3MM) 155
 MAST HOLE (1494mm dist. from pt. 0) +10 1/4
 TRUNK HEIGHT (310 -0+3MM) 310

MAST LENGTH (6499MM)
 Limiting bands & pin
 BOOM LENGTH (2642MM from aft edge of mast)
 Limiting bands
 POLE LENGTH (2642MM)
 RUDDER DIMENSIONS
 RUDDER WEIGHT (2.72kg) 3,0
 Fits the Transom (Y/N)
 CENTERBOARD DIMENSIONS
 Band
 Restraining System & stoppers

Mark ballast here



DATE MEASURED 29.09.2015
 MEASURER'S SIGNATURE [Signature]
 MEASURER'S STAMP SCIRA MEASURED ITALY
 NOTES:

Both pages must be completed and sent to the SCIRA office upon completion of measurement except if hull is from a certified mould.