

SNIFE CLASS RACING ASSOCIATION

MEASUREMENT DATA SHEET "I"

Revised November 2014

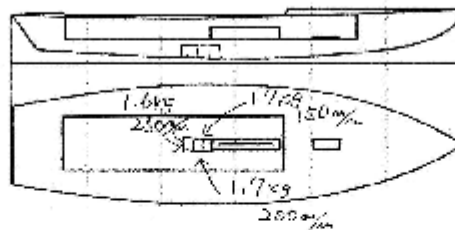
For boats built after January 1, 2015

HULL NUMBER 31228 BUILDER Person Marine Japan
 MODEL NINJA YEAR OF MANUFACTURE 2015
 OWNER HIKARI DEVICE COUNTRY JAPAN

BARE HULL COMPLETE INCOMPLETE
 HULL MATERIAL: WOOD FIBERGLASS make note of
 DECK MATERIAL: WOOD FIBERGLASS incomplete items

FROM CERTIFIED MOULD

HULL WEIGHT (min 125kg)	<u>130.5</u>	MAST LENGTH (6499mm)	<input type="checkbox"/>
TOTAL WEIGHT (min 172.8kg)	<u>172.8</u>	Limiting bands & pin	<input checked="" type="checkbox"/>
BALLAST (max 15kg mark below)	<u>5.0kg</u>	BOOM LENGTH (2642mm)	<input type="checkbox"/>
MOI	<u>22.6</u>	from aft mast	<input checked="" type="checkbox"/>
JIB FITTING	<u>OK</u>	Limiting band & pin	<input checked="" type="checkbox"/>
(279-330mm hor. from point D)		POI F LENGTH (2642mm)	<input checked="" type="checkbox"/>
max 45mm vert. from sheer		RUDDER DIMENSIONS	<input checked="" type="checkbox"/>
SHROUDS (1778-1981mm from point D)	<u>1780</u>	Weight (2.17kg)	<u>2.089</u>
MAST HOLE (1494mm from point D)	<u>1497</u>	Ballast (max 250g)	<input type="checkbox"/>
UPPER GUDGEON (110 +/- 3mm)	<u>410</u>	Parallel to transom (tolerance 2mm)	<input checked="" type="checkbox"/>
LOWER GUDGEON (155 +/- 3mm)	<u>155</u>	DAGGERBOARD DIMENSIONS	<input checked="" type="checkbox"/>
GUDGEONS DIAMETER (8-8.5mm)	<u>8mm</u>	Band	<input checked="" type="checkbox"/>
		Restraining System	<input checked="" type="checkbox"/>



DATE MEASURED 22. Aug. 2015 MEASURER'S STAMP

MEASURER'S NAME NOBUHIKO KUDOH
 NOTES:



SCIRA Measurement Check Sheet

To be used with the 80/20 true baseline measurement frame

Owner H/K OFFICE Date 22 Aug 2015

Hull 31228 Builder Pensom Marine Trava Material FRP

NEW MOULD: FIRST OR OF 5 CERTIFICATION RENEW Y/N

DO NOT COMPLETE IF FROM A CERTIFIED MOULD

Chine						
Station	Height			Allowable Range	Width	
	Starboard	Port	Total		Actual	Allowable Range
1	420.5	432	852.5	838-864	539	527-540
2	377	375	746	734-749	949	591-1003
3	342	365	697	673-699	1236	1232-1245
4	395	349	694	680-705	1274	1770-1783
5	380.5	372	772.5	762-797	119.1	1137-1149
Transom	45.8	46.1	91.9	902-927	956.5	952-965

Sheer						
Station	Height			Allowable Range	Width	
	Starboard	Port	Total		Actual	Allowable Range
1	767	728	1545	1199-1549	913	895-921
2	771	717	1458	1391-1441	1251	1316-1372
3	673	626	1299	1333-1384	1522	1511-1537
4	660	625	1335	1321-1472	1476	1473-1499
5	665	666	1331	1321-1372	1275	1270-1295
Transom	684	703	1392	1384-1435	1023	1072-1048

Keel				
Station	Height		Width	
	Actual	Allowable Range	Actual	Allowable Range
100mm	222.5	223-225		
1	162	162	95	Min 51
2	94	89-101	100	99-105
3	59.5	51-63	100	94-105
4	69	50-70	100	99-105
5	114	114	100	94-105
Transom	168	166-168	100	90-105

Stem Offset		
up from baseline	back from stem head	Actual
267	267-279	272
305	194-206	195
337	153-165	155
381	108-120	109
457	54-66	57
527	26-38	27
311 to 387	intersection of chine extension	

HIK OFFICE

31328

SNIPE CLASS RACING ASSOCIATION

MEASUREMENT DATA SHEET "I"

Miscellaneous					
Measurement	Actual	Allowable Range	Measurement	Actual	Allowable Range
LDA	472.8	4711 4/37	Chine radius at st. 1	OK	Max 15
Horizontal transom offset	21.8	200-279	Chine radius at st. 2 Transom	OK	Max 3
Stem height	700	683-700	Deck crown	116	Max 127
Bow radius	OK	Max 25			

Topside Measurements					
Measurement	Actual	Allowable Range	Measurement	Actual	Allowable Range
Aft end of trunk from stem	246.0	2438-2764	Mast step to sheer (vertical)	390	390-400
Top of trunk parallel to baseline	OK		Mast partners	150x 60	Max 256x76
Aft edge of trunk perpendicular to baseline	OK		Length of foredeck	1250	Min 1242
Keel to top of trunk	311	310-313	Length of aft deck	1195	Min 457
Length of daggerboard slot	538	Max 546	Sheer moulding	27	Max 32
Width of daggerboard slot	12.8	Max 13	Sheer moulding radius	12	Max 17
Sprayboard	87x63	Min 51 x 610			

Measurer

NOBUHIKO KUDARU

Stamp nr.


 J1 SCIRA
MEASUREP
JAPAN

計測証明書

登録番号 No. **31328**

新規計測・再計測

- 1. 所有者 氏名 HIKオフィス
住所 千葉県松戸市金原3-17-16
- 2. 建造者 氏名 ピアソンマリニシヤパン
住所 姫路市別府町北宿1109-5

上記は本協会登録計測証であることを証明する。

日本スナイプ協会

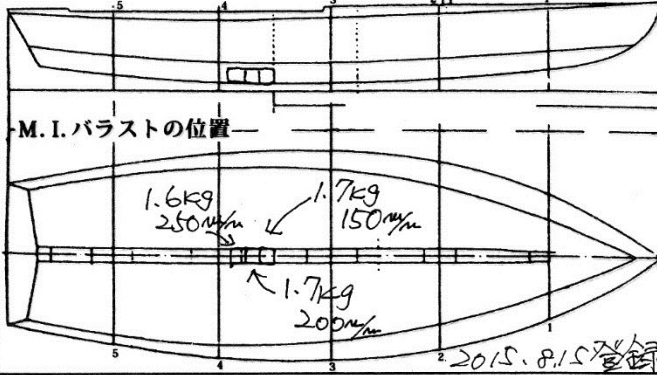
計測年月日 2015年 8月 22日

計測員

署名

百済信彦

材質 重量 172.8 kg バラスト 5.0 kg



備考 M.O.I.=200
 スワングレ係数 16.884909 25回 66.9秒
 実測値 66.9秒

67.8.

新規計測と再計測のどちらかを消す。
再計測証明書は、新規計測書に重ねて綴る。

計測証明書の再発行 (移籍、紛失)

2015年 8月 22日 発行者氏名

百済信彦

SNIFE CLASS RACING ASSOCIATION

MEASUREMENT DATA SHEET

Revised January 2017

For boats built or modified after January 1, 2017

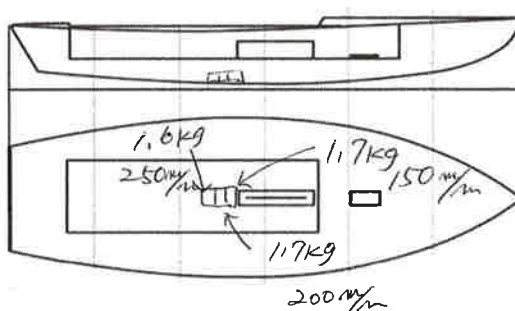
HULL NUMBER	3/328	BUILDER	Persson Marine Japan
MODEL	NINJA	YEAR OF MANUFACTURE	
OWNER	HIK OFFICE	COUNTRY	

BARE HULL	<input type="checkbox"/>	COMPLETE	<input checked="" type="checkbox"/>	INCOMPLETE	<input type="checkbox"/>
HULL MATERIAL: WOOD	<input type="checkbox"/>	FIBERGLASS	<input checked="" type="checkbox"/>	make note of	
DECK MATERIAL: WOOD	<input type="checkbox"/>	FIBERGLASS	<input checked="" type="checkbox"/>	incomplete items	
FROM CERTIFIED MOULD	<input type="checkbox"/>				

HULL WEIGHT (min 125kg)	130.5	MAST LENGTH (max 6499mm)	ok
TOTAL WEIGHT (min 172.8kg)	172.8	Limiting marks & pin	ok
CORRECTOR WEIGHTS (max 15kg)	5.0	Corrector weights (max 100gr)	ok
MOI	27.6	BOOM LENGTH (max 2642mm)	ok
Spring #	91	Limiting marks & pin	ok
JIB FITTING	28.2	POLE LENGTH (max 2642mm)	ok
(279-300mm hor. From Hull Datum Point)		RUDDER DIMENSIONS	ok
max 45mm vert. above sheerline)		Weight (min. 2.72kg)	3.0
SHROUDS (1778-1981mm from HDP)	1782.5	Corrector weight (max 250g)	-
MAST HOLE (min 1494-mm from HDP)	1495	Parallel to transom (tolerance 2mm)	ok
UPPER GUDGEON (410 +/-3mm)	411.5	DAGGERBOARD DIMENSIONS	ok
LOWER GUDGEON (155 +/-3mm)	156	Band	ok
GUDGEONS DIAMETER (8-8,5mm)	8.0	Safety line (max 600mm long)	ok
		Restraining system	ok

Insert the actual measurement in the cells marked as

Mark ballast position and amount below



DATE MEASURED 3.19.2017 MEASURER'S STAMP

MEASURER'S NAME NOBUHIKO KUPARA

NOTES:



Snipe Class International Racing Association

JPNAKI International Measurer
 KAZUYUKI HIGASHIJIMA
Kazuyuki Higashijima

T. Hishimura

3132A

Keel				
Station	Height		Width	
	Actual	Allowable Range	Actual	Allowable Range
400mm	224	223-235		
1	162	162	75	Min 51
2	94	89-101	101	99-105
3	54	51-63	101	99-105
4	69.5	58-70	101	99-105
5	114	114	101	99-105
Transom	167	166-168	101	99-105

Stem Offset		
up from baseline	back from HDP	Actual
267	267-279	269
305	194-206	199
337	153-165	158
381	108-120	111
457	54-66	59
527	26-38	29
311 to 387	intersection of chine extension ✓	

353

Miscellaneous

Measurement	Actual	Allowable Range	Measurement	Actual	Allowable Range
LOA	4733	4711-4737	Chine radius at st. 1	OK	Max 19
Horizontal transom offset	217	203-229	Chine radius st. 2 to transom	OK	Max 3
Hull Datum Point height	702	683-708	Deck height	117.5	Max 127
Bow radius	OK	Max 25			

Topside Measurements

Measurement	Actual	Allowable Range	Measurement	Actual	Allowable Range
Aft end of dagg. slot from Hull datum point	2462	2438-2464	Mast step to sheer (vertical)	393.5	390-400
Top of case parallel to baseline	376		Mast hole in the deck	149.5 x 59	Max 256x76
Aft edge of slot perpendicular to baseline	376		Length of foredeck	1850	Min 1842
Keel to top of daggerboard case	311	310-313	Length of aft deck	1205	Min 457
Length of daggerboard slot	536	Max 546	Sheer strikes	OK	Max 32
Width of daggerboard slot	11	Max 13	Gunwale radius	OK	Max 12
Splashboard	51 x 940	Min 51 x 610			

Measurer NOBUHIKO KUDARA



Snipe Class International Racing Association

International Measurers
 JPNKH1
 KAZUYUKI HIGASHIJIMA
Kazuyuki Higashijima

T. Kishimura

SCIRA Measuremen Check Sheet

To be used with the 80/20 true baseline measurement frame

Owner HIK OFFICE Date 3.19.2017

Hull 31320 Builder Persson Marine Japan Material FRP

NEW MOULD: FIRST OR OF 5 CERTIFICATION RENEW Y/N

DO NOT COMPLETE IF FROM A CERTIFIED MOULD

Chine						
	Height			Width		
Station	Starboard	Port	Total	Allowable Range	Actual	Allowable Range
1	427	426	853	838-864	530	527-540
2	376	371	747	724-749	994	991-1003
3	339	350	689	673-699	1237	1232-1245
4	356	340	696	680-705	1277	1270-1283
5	382	394	776	762-787	1142	1137-1149
Transom	450	462	912	902-927	956	952-965

Sheer						
	Height			Width		
Station	Starboard	Port	Total	Allowable Range	Actual	Allowable Range
1	769	777	1546	1499-1549	908	895-921
2	719	712	1431	1391-1441	1355	1346-1372
3	673	683	1356	1333-1384	1525	1511-1537
4	663	673	1336	1321-1372	1475.5	1473-1499
5	666	680	1346	1321-1372	1275	1270-1295
Transom	695	701	1396	1384-1435	1023	1022-1048

International Measuremen
 JPNKHI
 KAZUYUKI HIGASHIJIMA
Kazuyuki Higashijima

HOBUHIKO KUDARA
 Snipe Class International Racing Association
 SCIRA MEASUREMEN JAPAN

T. Nishimura