

# SNIFE CLASS RACING ASSOCIATION

## MEASUREMENT DATA SHEET

Revised January 2017

For boats built or modified after January 1, 2017

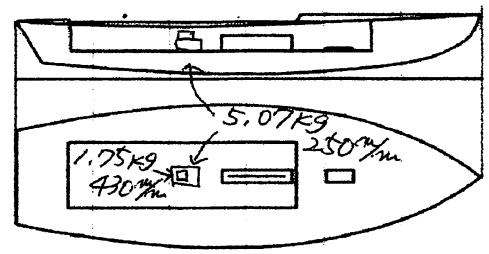
HULL NUMBER	31356	BUILDER	Petsson Marine Japan
MODEL	NINJA	YEAR OF MANUFACTURE	2016
OWNER	Nihon University	COUNTRY	JAPAN

BARE HULL	<input type="checkbox"/>	COMPLETE	<input checked="" type="checkbox"/>	INCOMPLETE	<input type="checkbox"/>
HULL MATERIAL: WOOD	<input type="checkbox"/>	FIBERGLASS	<input checked="" type="checkbox"/>	make note of	
DECK MATERIAL: WOOD	<input type="checkbox"/>	FIBERGLASS	<input checked="" type="checkbox"/>	incomplete items	
FROM CERTIFIED MOULD	<input type="checkbox"/>				

HULL WEIGHT (min 125kg)	134.0	MAST LENGTH (max 6499mm)	OK
TOTAL WEIGHT (min 172.8kg)	172.8	Limiting marks & pin	OK
CORRECTOR WEIGHTS (max 15kg)	6.82	Corrector weights (max 100gr)	OK
MOI	27.6	BOOM LENGTH (max 2642mm)	OK
Spring #	-	Limiting marks & pin	OK
JIB FITTING	283	POLE LENGTH (max 2642mm)	OK
(279-300mm hor. From Hull Datum Point)		RUDDER DIMENSIONS	OK
max 45mm vert. above sheerline)		Weight (min. 2.72kg)	3.06
SHROUDS (1778-1981mm from HDP)	1778	Corrector weight (max 250g)	OK
MAST HOLE (min 1494-mm from HDP)	1494	Parallel to transom (tolerance 2mm)	OK
UPPER GUDGEON (410 +/-3mm)	409	DAGGERBOARD DIMENSIONS	OK
LOWER GUDGEON (155 +/-3mm)	154	Band	OK
GUDGEONS DIAMETER (8-8,5mm)	8.0	Safety line (max 600mm long)	OK
		Restraining system	OK

Insert the actual measurement in the cells marked as

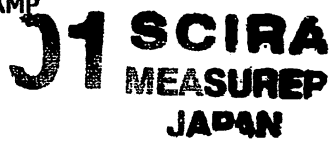
Mark ballast position and amount below



DATE MEASURED May 27, 2016 MEASURER'S STAMP

MEASURER'S NAME NOBORHIKO KODARA

NOTES:



Snipe Class International Racing Association

## SCIRA Measuremen Check Sheet

To be used with the 80/20 true baseline measurement frame

Owner NIHON UNIVERSITY Date May 27, 2016Hull 31356 Builder Persson Marine Japan Material FRPNEW MOULD: FIRST  OR  OF 5 CERTIFICATION RENEW  Y/N

DO NOT COMPLETE IF FROM A CERTIFIED MOULD

Chine						
Station	Height			Width		
	Starboard	Port	Total	Allowable Range	Actual	Allowable Range
1	423	427	850	838-864	528	527-540
2	371.5	371.5	743	724-749	996	991-1003
3	346	342.5	688.5	673-699	1236.5	1232-1245
4	351	341	692	680-705	1275.5	1270-1283
5	389	384	773	762-787	1142.5	1137-1149
Transom	458	461	919	902-927	956.5	952-965

Sheer						
Station	Height			Width		
	Starboard	Port	Total	Allowable Range	Actual	Allowable Range
1	769	770	1539	1499-1549	915	895-921
2	709	708	1417	1391-1441	1359	1346-1372
3	675	679	1354	1333-1384	1519	1511-1537
4	664	660	1324	1321-1372	1473	1473-1499
5	669	666	1335	1321-1372	1271	1270-1295
Transom	696.5	697	1393.5	1384-1435	1023	1022-1048

NOBUHIKO KUDARA **J1 SCIRA** Snipe Class International Racing Association  
MEASURE JAPAN

# 31356

Keel				
Station	Height		Width	
	Actual	Allowable Range	Actual	Allowable Range
400mm	224	223-235		
1	162	162	75	Min 51
2	94	89-101	101	99-105
3	54.5	51-63	101	99-105
4	70	58-70	101	99-105
5	114	114	101	99-105
Transom	167	166-168	101	99-105

Stem Offset		
up from baseline	back from HDP	Actual
267	267-279	271
305	194-206	196
337	153-165	156
381	108-120	110
457	54-66	58
527	26-38	27
311 to 387	intersection of chine extension ✓	

Miscellaneous					
Measurement	Actual	Allowable Range	Measurement	Actual	Allowable Range
LOA	4734	4711-4737	Chine radius at st. 1	OK	Max 19
Horizontal transom offset	220	203-229	Chine radius st. 2 to transom	OK	Max 3
Hull Datum Point height	701	683-708	Deck height	OK	Max 127
Bow radius	OK	Max 25			

Topside Measurements					
Measurement	Actual	Allowable Range	Measurement	Actual	Allowable Range
Aft end of dagg. slot from Hull datum point	2451	2438-2464	Mast step to sheer (vertical)	394	390-400
Top of case parallel to baseline	376.5		Mast hole in the deck	137 x 60	Max 256x76
Aft edge of slot perpendicular to baseline	373		Length of foredeck	1849	Min 1842
Keel to top of daggerboard case	311	310-313	Length of aft deck	1205	Min 457
Length of daggerboard slot	535	Max 546	Sheer strikes	OK	Max 32
Width of daggerboard slot	11.5	Max 13	Gunwale radius	OK	Max 12
Splashboard	52 x 955	Min 51 x 610			

Measurer NOBUHIKO.KODARA

Stamp **J1 SCIRA MEASUREP JAPAN**

Snipe Class International Racing Association

# 計 測 証 明 書

登録番号 No. **31356**

新規計測・再計測

- 1. 所有者 氏名 日本大学  
住所 東京都千代田区五番町2-6
- 2. 建造者 氏名 ピアソンマシニヤパン  
住所 姫路市別所町北宿1109-5

上記は本協会登録計測証であることを証明する。

日本スナイプ協会

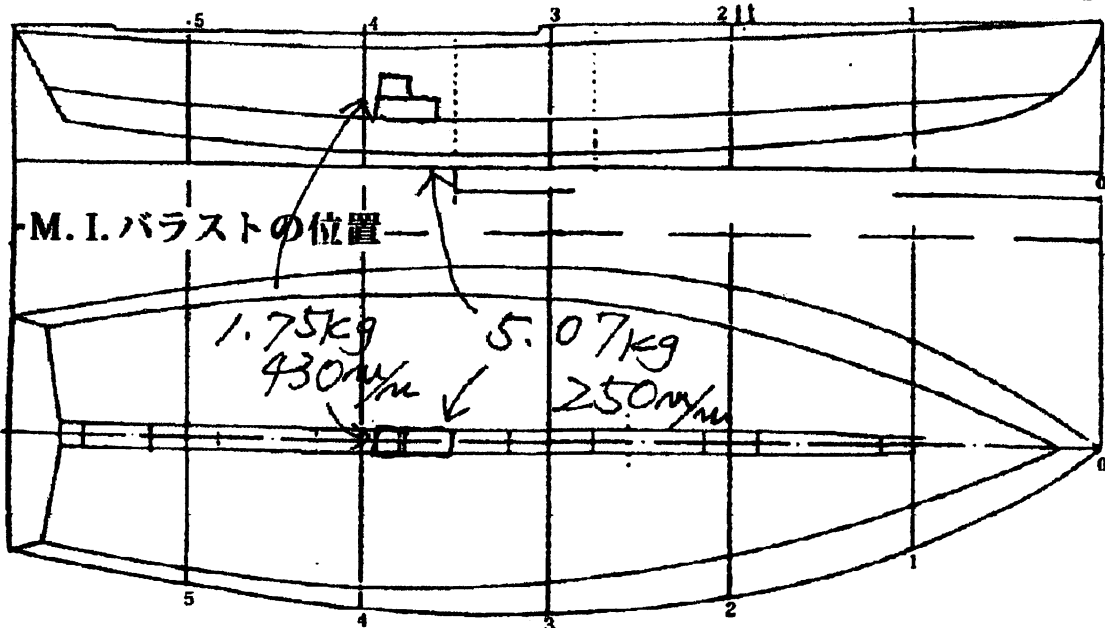
計測年月日 2016年 3月 27日

計測員

署名

百 済 信 彦 (印)

材質 重量 172.8 kg バラスト 6.82 kg



備考 M.O.I = 200

スプリング係数 16.884909 (25回 66.9秒)

実測値 25回 66.9秒

計測証明書の再発行 (移籍、紛失)

31356

# SNIPE CLASS RACING ASSOCIATION

## MEASUREMENT DATA SHEET "I"

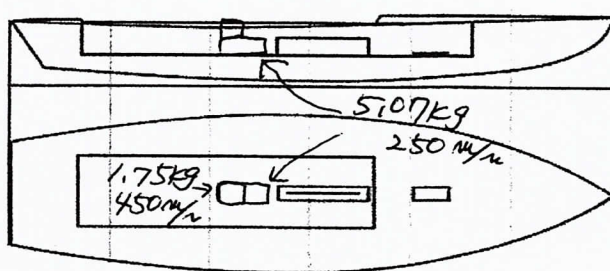
Revised November 2014

For boats built after January 1, 2015

HULL NUMBER	31356	BUILDER	Persson Marine Japan
MODEL	NINJA	YEAR OF MANUFACTURE	2016
OWNER	Nihon University	COUNTRY	JAPAN

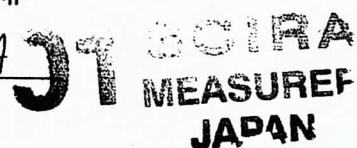
<b>BARE HULL</b>	<input type="checkbox"/>	<b>COMPLETE</b>	<input checked="" type="checkbox"/>	<b>INCOMPLETE</b>	<input type="checkbox"/>
HULL MATERIAL: WOOD	<input type="checkbox"/>	FIBERGLASS	<input checked="" type="checkbox"/>	make note of	
DECK MATERIAL: WOOD	<input type="checkbox"/>	FIBERGLASS	<input checked="" type="checkbox"/>	incomplete items	
FROM CERTIFIED MOULD	<input type="checkbox"/>				

HULL WEIGHT (min 125kg)	134kg	MAST LENGTH (6499mm)	OK
TOTAL WEIGHT (min 172.8kg)	172.8kg	Limiting bands & pin	OK
BALLAST (max 15kg mark below)	6.82kg	BOOM LENGTH (2642mm)	
MOI	27.6	from aft mast)	OK
JIB FITTING	283mm	Limiting band & pin	OK
(279-300mm hor. from point 0)		POLE LENGTH (2642mm)	OK
max 45mm vert. from sheer)		RUDDER DIMENSIONS	OK
SHROUDS (1778-1981mm from point 0)	1778mm	Weight (2.72kg)	3.06kg
MAST HOLE (1494mm from point 0)	1494mm	Ballast (max 250g)	OK
UPPER GUDGEON (410 +/-3mm)	409mm	Parallel to transom (tolerance 2mm)	OK
LOWER GUDGEON (155 +/-3mm)	154mm	DAGGERBOARD DIMENSIONS	OK
GUDGEONS DIAMETER (8-8,5mm)	8mm	Band	OK
		Restraining System	OK



DATE MEASURED Mar. 27. 2016 MEASURER'S STAMP

MEASURER'S NAME NORUHIKO. KUDARA  
NOTES:



### SCIRA Measurement Check Sheet

To be used with the 80/20 true baseline measurement frame

Owner NIHON UNIVERSITY Date Mar. 27. 2016

Hull 31356 Builder Perssom Marine Japan Material FRP

NEW MOULD: FIRST  OR  OF 5 CERTIFICATION RENEW  Y/N

DO NOT COMPLETE IF FROM A CERTIFIED MOULD

Chine						
Station	Height			Allowable Range	Width	
	Starboard	Port	Total		Actual	Allowable Range
1	423	427	850	838-864	528	527-540
2	371.5	371.5	743	724-749	996	991-1003
3	346	342.5	688.5	673-699	1236.5	1232-1245
4	351	341	692	680-705	1275.5	1270-1283
5	389	384	773	762-787	1142.5	1137-1149
Transom	458	461	919	902-927	956.5	952-965

Sheer						
Station	Height			Allowable Range	Width	
	Starboard	Port	Total		Actual	Allowable Range
1	769	770	1539	1499-1549	915	895-921
2	709	708	1417	1391-1441	1359	1346-1372
3	675	679	1354	1333-1384	1519	1511-1537
4	664	660	1323	1321-1372	1473	1473-1499
5	669	666	1335	1321-1372	1271	1270-1295
Transom	696.5	697	1393	1384-1435	1023	1022-1048

Keel				
Station	Height		Width	
	Actual	Allowable Range	Actual	Allowable Range
400mm	224	223-235		
1	162	162	75	Min 51
2	94	89-101	101	99-105
3	54.5	51-63	101	99-105
4	70	58-70	101	99-105
5	114	114	101	99-105
Transom	167	166-168	101	99-105

Stem Offset		
up from baseline	back from stem head	Actual
267	267-279	271
305	194-206	196
337	153-165	156
381	108-120	110
457	54-66	58
527	26-38	27
311 to 387	intersection of chine extension <input checked="" type="checkbox"/>	

NOBUHIKO. KUDOH

SCIRA MEASURE JAPAN International Racing Association

# 31356

### SNIPE CLASS RACING ASSOCIATION

#### MEASUREMENT DATA SHEET "I"

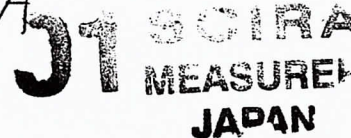
Miscellaneous					
Measurement	Actual	Allowable Range	Measurement	Actual	Allowable Range
LOA	4734	4711-4737	Chine radius at st. 1	OK	Max 19
Horizontal transom offset	220	203-229	Chine radius at st. 2-Transom	OK	Max 3
Stem height	701	683-708	Deck crown	OK	Max 127
Bow radius	OK	Max 25			

Topside Measurements					
Measurement	Actual	Allowable Range	Measurement	Actual	Allowable Range
Aft end of Trunk from stem	2451	2438-2464	Mast step to sheer (vertical)	394	390-400
Top of trunk parallel to baseline	376.5		Mast partners	137 x 60	Max 256x76
Aft edge of trunk perpendicular to baseline	373		Length of foredeck	1841	Min 1842
Keel to top of trunk	311	310-313	Length of aft deck	1205	Min 457
Length of daggerboard slot	535	Max 546	Sheer moulding	OK	Max 32
Width of daggerboard slot	115	Max 13	Sheer moulding radius	OK	Max 12
Sprayboard	52 x 955	Min 51 x 610			

Measurer

Stamp nr.

N OBUHIKO.KUDARA



# 計測証明書

登録番号 No. **31356**

新規計測・再計測

- 1. 所有者 氏名 日本大学  
住所 東京都千代田区五番町2-6
- 2. 建造者 氏名 ピアソン・マシニング・ジャパン  
住所 姫路市別所町北宿1109-5

上記は本協会登録計測証であることを証明する。

日本スナイプ協会

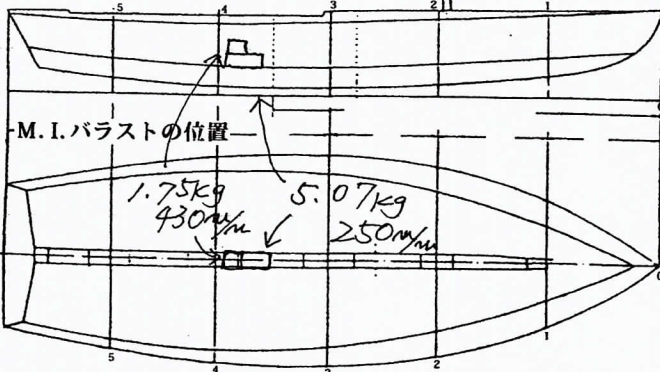
計測年月日 2016年 3月 27日

計測員

署名

百済信彦 (印)

材質 重量 172.8 kg バラスト 6.82 kg



備考 M.O.I.=200  
 スプリング係数 16.884909 (25回 66.9秒)  
 実測値 25回 66.9秒

計測証明書の再発行 (移籍、紛失)

2016年3月27日 発行者氏名 百済信彦 (印)

新規計測と再計測のどちらかを消す。  
再計測証明書は、新規計測書に重ねて綴る。

Length of Hull No.31356 Fore Deck re-measurement

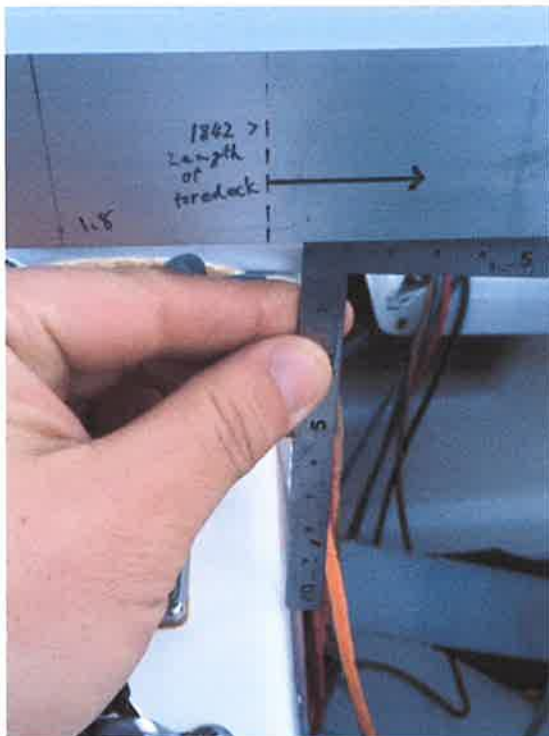


Hull No.31356



Marking sheer point

Length of Hull No.31356 Fore Deck re-measurement



Marking actual fore deck length



Length of Hull No.31356 Fore Deck re-measurement



Actual length 1849mm

I hereby certify that foredeck of Hull No.31356 has been clearly re-measured.

24/3/2017

Chief Measurer

NOBUHIKO KUDARA

Nobuhiko Kudara

*T. Hishimura*