

SNIFE CLASS RACING ASSOCIATION

MEASUREMENT DATA SHEET "I"

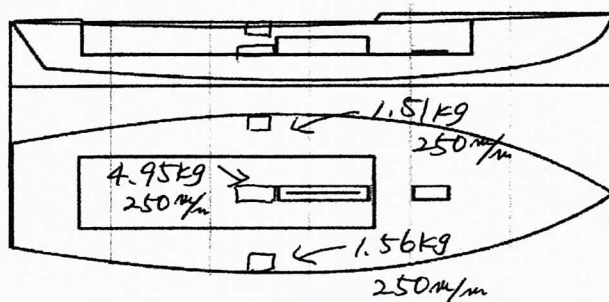
Revised November 2014

For boats built after January 1, 2015

HULL NUMBER	31358	BUILDER	Dersson Marine Japan
MODEL	NINJA	YEAR OF MANUFACTURE	2016
OWNER	Kansai University	COUNTRY	JAPAN

BARE HULL	<input type="checkbox"/>	COMPLETE	<input checked="" type="checkbox"/>	INCOMPLETE	<input type="checkbox"/>
HULL MATERIAL: WOOD	<input type="checkbox"/>	FIBERGLASS	<input checked="" type="checkbox"/>	make note of	
DECK MATERIAL: WOOD	<input type="checkbox"/>	FIBERGLASS	<input checked="" type="checkbox"/>	incomplete items	
FROM CERTIFIED MOULD	<input type="checkbox"/>				

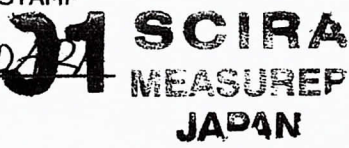
HULL WEIGHT (min 125kg)	134kg	MAST LENGTH (6499mm)	OK
TOTAL WEIGHT (min 172.8kg)	172.8kg	Limiting bands & pin	OK
BALLAST (max 15kg mark below)	8.0kg	BOOM LENGTH (2642mm)	
MOI	27.6	from aft mast)	OK
JIB FITTING	283mm	Limiting band & pin	OK
(279-300mm hor. from point 0)		POLE LENGTH (2642mm)	OK
max 45mm vert. from sheer)		RUDDER DIMENSIONS	OK
SHROUDS (1778-1981mm from point 0)	1778mm	Weight (2.72kg)	3.0kg
MAST HOLE (1494mm from point 0)	1494mm	Ballast (max 250g)	0kg
UPPER GUDGEON (410 +/-3mm)	409mm	Parallel to transom (tolerance 2mm)	OK
LOWER GUDGEON (155 +/-3mm)	154mm	DAGGERBOARD DIMENSIONS	OK
GUDGEONS DIAMETER (8-8,5mm)	8mm	Band	OK
		Restraining System	OK



DATE MEASURED Apr. 2, 2016 MEASURER'S STAMP

MEASURER'S NAME NDBUHIKO KUDOH

NOTES:



SCIRA Measurement Check Sheet

To be used with the 80/20 true baseline measurement frame

Owner KANSAI UNIVERSITY Date Apr. 2, 2016
 Hull 31358 Builder Persson Marine Japan Material FRP

NEW MOULD: FIRST OR OF 5 CERTIFICATION RENEW Y/N

DO NOT COMPLETE IF FROM A CERTIFIED MOULD

Chine						
Station	Height			Allowable Range	Width	
	Starboard	Port	Total		Actual	Allowable Range
1	423	427	850	838-864	528	527-540
2	371.5	371.5	743	724-749	996	991-1003
3	346	342.5	688.5	673-699	1236.5	1232-1245
4	351	341	692	680-705	1225.5	1270-1283
5	389	384	773	762-787	1142.5	1137-1149
Transom	458	461	919	902-927	956.5	952-965

Sheer						
Station	Height			Allowable Range	Width	
	Starboard	Port	Total		Actual	Allowable Range
1	769	770	1539	1499-1549	915	895-921
2	709	708	1417	1391-1441	1359	1346-1372
3	675	679	1354	1333-1384	1519	1511-1537
4	664	660	1324	1321-1372	1473	1473-1499
5	669	666	1335	1321-1372	1271	1270-1295
Transom	696.5	697	1393	1384-1435	1023	1022-1048

Keel				
Station	Height		Width	
	Actual	Allowable Range	Actual	Allowable Range
400mm	224	223-235		
1	162	162	75	Min 51
2	94	89-101	101	99-105
3	54.5	51-63	101	99-105
4	70	58-70	101	99-105
5	114	114	101	99-105
Transom	167	166-168	101	99-105

Stem Offset		
up from baseline	back from stem head	Actual
267	267-279	271
305	194-206	196
337	153-165	156
381	108-120	110
457	54-66	58
527	26-38	27
311 to 387	intersection of chine extension ✓	

31358

SNIFE CLASS RACING ASSOCIATION MEASUREMENT DATA SHEET "I"

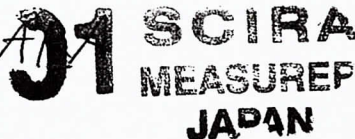
Miscellaneous					
Measurement	Actual	Allowable Range	Measurement	Actual	Allowable Range
LOA	4734	4711-4737	Chine radius at st. 1	OK	Max 19
Horizontal transom offset	220	203-229	Chine radius at st. 2-Transom	OK	Max 3
Stem height	701	683-708	Deck crown	OK	Max 127
Bow radius	OK	Max 25			

Topside Measurements					
Measurement	Actual	Allowable Range	Measurement	Actual	Allowable Range
Aft end of Trunk from stem	2451	2438-2464	Mast step to sheer (vertical)	394	390-400
Top of trunk parallel to baseline	376.5		Mast partners	137x60	Max 256x76
Aft edge of trunk perpendicular to baseline	373		Length of foredeck	1841	Min 1842
Keel to top of trunk	311	310-313	Length of aft deck	1205	Min 457
Length of daggerboard slot	535	Max 546	Sheer moulding	OK	Max 32
Width of daggerboard slot	115	Max 13	Sheer moulding radius	OK	Max 12
Sprayboard	52x95	Min 51 x 610			

Measurer

Stamp nr.

NOBUHIKO. KUDOH



SCIRA
MEASUREP
JAPAN

計測証明書

登録番号 No. 31358

新規計測・再計測

- 1. 所有者 氏名 関西大学
住所 大阪府吹田市山手町3丁目3-35
- 2. 建造者 氏名 ヒアムマリニジャパン
住所 姫路市別所町北宿1109-5

上記は本協会登録計測証であることを証明する。

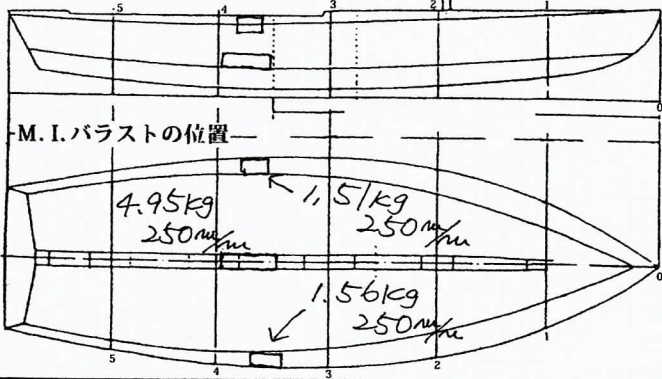
日本スナイプ協会

計測年月日 2016年 4月 2日

計測員

署名 百瀬信彦

材質 重量 172.8 kg バラスト 0.02 kg



備考 M.O.I = 200
スワングレイン係数 16.884909 (25回 66.9秒)
実測値 25回 66.9秒

計測証明書の再発行 (移籍、紛失)

2016年 4月 2日 発行者氏名 百瀬信彦

新規計測と再計測のどちらかを消す。再計測証明書は、新規計測書に重ねて綴る。

SNIFE CLASS RACING ASSOCIATION

MEASUREMENT DATA SHEET

Revised January 2017

For boats built or modified after January 1, 2017

HULL NUMBER	31350	BUILDER	Dersson Marine Japan
MODEL	NINJA	YEAR OF MANUFACTURE	2016
OWNER	Kansai University	COUNTRY	JAPAN

BARE HULL COMPLETE INCOMPLETE

HULL MATERIAL: WOOD FIBERGLASS make note of

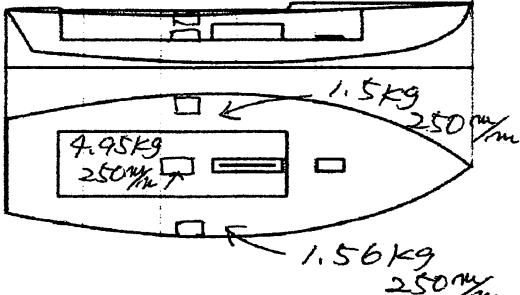
DECK MATERIAL: WOOD FIBERGLASS incomplete items

FROM CERTIFIED MOULD

HULL WEIGHT (min 125kg)	134.0	MAST LENGTH (max 6499mm)	OK
TOTAL WEIGHT (min 172.8kg)	172.8	Limiting marks & pin	OK
CORRECTOR WEIGHTS (max 15kg)	8.0	Corrector weights (max 100gr)	OK
MOI	27.6	BOOM LENGTH (max 2642mm)	OK
Spring #	-	Limiting marks & pin	OK
JIB FITTING	283	POLE LENGTH (max 2642mm)	OK
(279-300mm hor. From Hull Datum Point)		RUDDER DIMENSIONS	OK
max 45mm vert. above sheerline)		Weight (min. 2.72kg)	3.08
SHROUDS (1778-1981mm from HDP)	1778	Corrector weight (max 250g)	OK9
MAST HOLE (min 1494-mm from HDP)	1494	Parallel to transom (tolerance 2mm)	OK
UPPER GUDGEON (410 +/-3mm)	409	DAGGERBOARD DIMENSIONS	OK
LOWER GUDGEON (155 +/-3mm)	154	Band	OK
GUDGEONS DIAMETER (8-8,5mm)	8.0	Safety line (max 600mm long)	OK
		Restraining system	OK

Insert the actual measurement in the cells marked as

Mark ballast position and amount below



DATE MEASURED Apr. 2, 2016 MEASURER'S STAMP

MEASURER'S NAME NOBUHIKO.KUDARA

NOTES:



Snipe Class International Racing Association

SCIRA Measuremen Check Sheet

To be used with the 80/20 true baseline measurement frame

Owner KANSAI UNIVERSITY Date Apr. 2, 2016

Hull 3/358 Builder Persson Marine Japan Material FRP

NEW MOULD: FIRST OR OF 5 CERTIFICATION RENEW Y/N

DO NOT COMPLETE IF FROM A CERTIFIED MOULD

Chine						
Station	Height				Width	
	Starboard	Port	Total	Allowable Range	Actual	Allowable Range
1	423	427	850	838-864	528	527-540
2	371.5	371.5	743	724-749	996	991-1003
3	346	342.5	688.5	673-699	1236.5	1232-1245
4	351	341	692	680-705	1275.5	1270-1283
5	389	384	773	762-787	1142.5	1137-1149
Transom	458	461	919	902-927	956.5	952-965

Sheer						
Station	Height				Width	
	Starboard	Port	Total	Allowable Range	Actual	Allowable Range
1	769	770	1539	1499-1549	915	895-921
2	709	708	1417	1391-1441	1359	1346-1372
3	675	679	1354	1333-1384	1519	1511-1537
4	664	660	1324	1321-1372	1473	1473-1499
5	669	666	1335	1321-1372	1271	1270-1295
Transom	696.5	697	1393.5	1384-1435	1023	1022-1048

NOBUHIKO ICHIDARA **J1 SCIRA** International Racing Association
MEASURE
JAPAN

31358

Keel				
Station	Height		Width	
	Actual	Allowable Range	Actual	Allowable Range
400mm	224	223-235		
1	162	162	75	Min 51
2	94	89-101	101	99-105
3	54.5	51-63	101	99-105
4	70	58-70	101	99-105
5	114	114	101	99-105
Transom	167	166-168	101	99-105

Stem Offset		
up from baseline	back from HDP	Actual
267	267-279	271
305	194-206	196
337	153-165	156
381	108-120	110
457	54-66	58
527	26-38	27
311 to 387	intersection of chine extension ✓	

Miscellaneous					
Measurement	Actual	Allowable Range	Measurement	Actual	Allowable Range
LOA	4734	4711-4737	Chine radius at st. 1	OK	Max 19
Horizontal transom offset	220	203-229	Chine radius st. 2 to transom	OK	Max 3
Hull Datum Point height	701	683-708	Deck height	OK	Max 127
Bow radius	OK	Max 25			

Topside Measurements					
Measurement	Actual	Allowable Range	Measurement	Actual	Allowable Range
Aft end of dagg. slot from Hull datum point	2451	2438-2464	Mast step to sheer (vertical)	394	390-400
Top of case parallel to baseline	376.5		Mast hole in the deck	130 x 60	Max 256x76
Aft edge of slot perpendicular to baseline	373		Length of foredeck	1850	Min 1842
Keel to top of daggerboard case	311	310-313	Length of aft deck	1205	Min 457
Length of daggerboard slot	535	Max 546	Sheer strikes	OK	Max 32
Width of daggerboard slot	11.5	Max 13	Gunwale radius	OK	Max 12
Splashboard	52 x 955	Min 51 x 610			

Measurer NOBUHIKO, KUDARA

Stamp nr. **J1 SCIRA MEASURE-JAPAN**

Snipe Class International Racing Association

計測証明書

登録番号 No. **31358**

新規計測・再計測

- 所有者 氏名 関西大学
住所 大阪府吹田市山手町3丁目3-35
- 建造者 氏名 ピオニマリンジャパン
住所 姫路市別所町北宿1109-5

上記は本協会登録計測証であることを証明する。

日本スナイプ協会

計測年月日 2016年 4月 2日

計測員

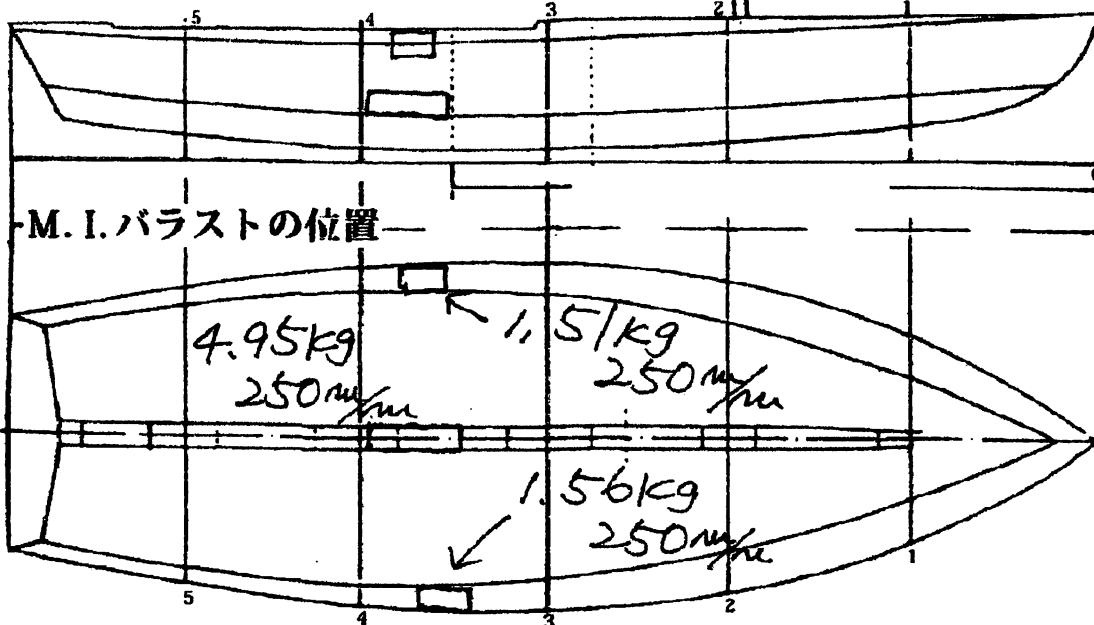
署名

百瀬信彦



材質

重量 172.8 kg バラスト 8.02 kg



備考 M.O.I = 200

スプリング係数 16.884909 (25回 66.9秒)

実測値 25回 66.9秒

計測証明書の再発行 {移籍、紛失}

2016年 4月 2日 発行者氏名

百瀬信彦



新規計測と再計測のどちらかを消す。
再計測証明書は、新規計測書に重ねて綴る。

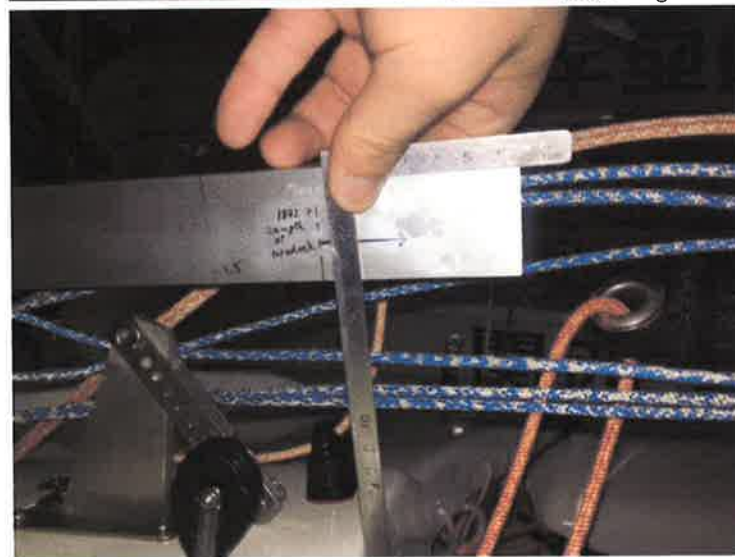
Length of Hull No.31358 Fore Deck re-measurement



Hull No.31358



Marking sheer point



Marking the length

Length of Hull No.31358 Fore Deck re-measurement



Actual length 1850mm

I hereby certify that foredeck of Hull No.31358 has been clearly re-measured.

24/3/2017

Chief Measurer

NOBUHIKO KUDARA

Nobuhiko Kudara

J. Nishimura

Hull No.31328 re-measurement 19th /3/2017



Hull No.31328



Boat fixed parallel to the ground

Hull No.31328 re-measurement 19th /3/2017



Foredeck area
measurement

Left: Nobuhiko Kudara
Right:
Kazuyuki Higasijima



Mast hole



breakwater hight, width



Afterdeck length

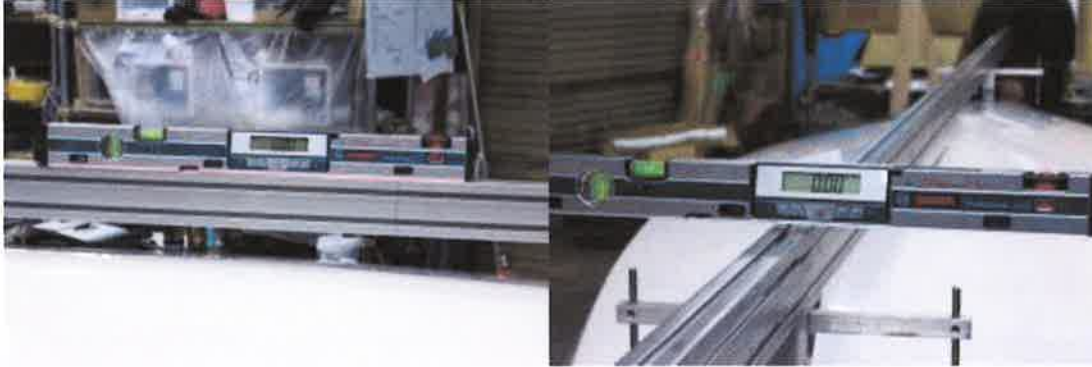
Transom gudgeon hight



Center board case hight

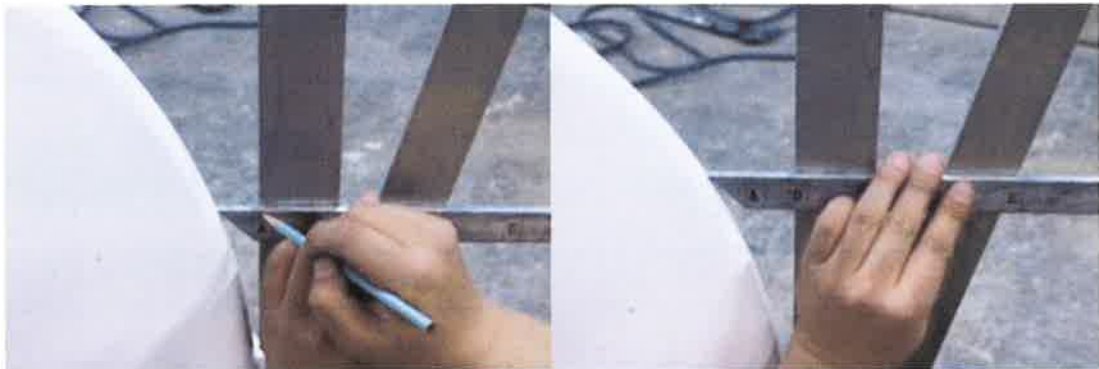


Placing a jig parallel to the ground and boat





Stem measurement





Hull measurement using jigs



Transom sheer hight



Measuring sheer hight



Measuring radius using a jig

I hereby certify that Hull No.31328 has been clearly re-measured.

24/3/2017

Chief Measurer

NOBUHIKO.KUDARA

Nobuhiko Kudara

T. Fishimura