

Snipe Class International Racing Association
MEASUREMENT CERTIFICATE

Hull number 31446 Year of manufacturer 2017

Builder DB MARINE Model # DB-R1

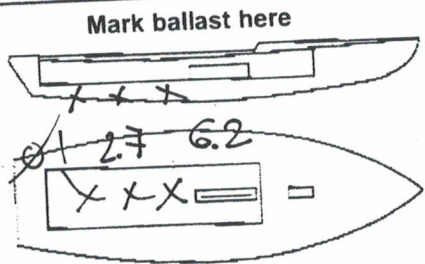
Owner DB MARINE

Country ITALY

Weight 172.8

Ballast 8.9

MOI 727.6



Measurer/s GIORGIO BREZICH

Date of measurement 24.07.2017

Measurer or National Secretary stamp and signature _____

I hereby agree to all SCIRA rules and by-laws. I agree to notify a SCIRA measurer if any equipment modified, replaced and/or transferred.
SCIRA reserves the right to measure this boat and any equipment at any time.

Owner signature _____

Date _____

THIS CERTIFICATE REMAINS WITH THE OWNER OF THIS
SNIPE. IT CAN BE REPLACED BY REMEASUREMENT.

SNIFE CLASS RACING ASSOCIATION

MEASUREMENT DATA SHEET

Revised January 2017

For boats built or modified after January 1, 2017

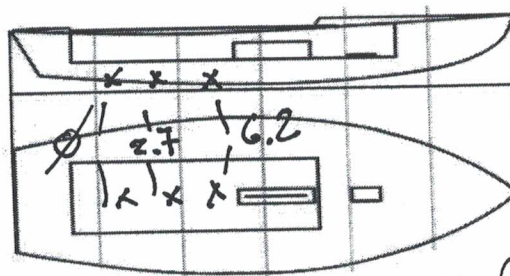
HULL NUMBER	31446	BUILDER	DB MARINE
MODEL	DB-R1	YEAR OF MANUFACTURE	2017
OWNER	DB MARINE	COUNTRY	ITALY

BARE HULL	<input type="checkbox"/>	COMPLETE	<input checked="" type="checkbox"/>	INCOMPLETE	<input type="checkbox"/>
HULL MATERIAL: WOOD	<input type="checkbox"/>	FIBERGLASS	<input checked="" type="checkbox"/>	make note of	
DECK MATERIAL: WOOD	<input type="checkbox"/>	FIBERGLASS	<input checked="" type="checkbox"/>	incomplete items	
FROM CERTIFIED MOULD	<input checked="" type="checkbox"/>				

HULL WEIGHT (min 125kg)	<input checked="" type="checkbox"/>	MAST LENGTH (max 6499mm)	<input checked="" type="checkbox"/>
TOTAL WEIGHT (min 172.8kg)	<input checked="" type="checkbox"/>	Limiting marks & pin	<input checked="" type="checkbox"/>
CORRECTOR WEIGHTS (max 15kg)	8.9	Corrector weights (max 100gr)	<input checked="" type="checkbox"/>
MOI	727.6	BOOM LENGTH (max 2642mm)	<input checked="" type="checkbox"/>
Spring #		Limiting marks & pin	<input checked="" type="checkbox"/>
JIB FITTING	280	POLE LENGTH (max 2642mm)	<input checked="" type="checkbox"/>
(279-300mm hor. From Hull Datum Point)		RUDDER DIMENSIONS	
max 45mm vert. above sheerline)		Weight (min. 2.72kg)	3.0
SHROUDS (1778-1981mm from HDP)	1782	Corrector weight (max 250g)	<input checked="" type="checkbox"/>
MAST HOLE (min 1494-mm from HDP)	+87	Parallel to transom (tolerance 2mm)	<input checked="" type="checkbox"/>
UPPER GUDGEON (410 +/-3mm)	410	DAGGERBOARD DIMENSIONS	
LOWER GUDGEON (155 +/-3mm)	154	Band	<input checked="" type="checkbox"/>
GUDGEONS DIAMETER (8-8,5mm)	8	Safety line (max 600mm long)	600
		Restraining system	<input checked="" type="checkbox"/>

Insert the actual measurement in the cells marked as

Mark ballast position and amount below



DATE MEASURED 24.07.2017 MEASURER'S STAMP

MEASURER'S NAME GIORGIO BREZICH

NOTES:

01 SCIRA
MEASURER
ITALY

SCIRA Measuremen Check Sheet

To be used with the 80/20 true baseline measurement frame

Owner DB MARINE Date 24.07.2017

Hull 31446 Builder DB MARINE Material FG

NEW MOULD: FIRST OR OF 5 CERTIFICATION RENEW Y/N

DO NOT COMPLETE IF FROM A CERTIFIED MOULD

Chine						
Station	Height			Allowable Range	Width	
	Starboard	Port	Total		Actual	Allowable Range
1	423 372	423 372	846	838-864	535	527-540
2	363	367	730	724-749	1000	991-1003
3	338	343	681	673-699	1235	1232-1245
4	342	347	689	680-705	1274	1270-1283
5	384	384	768	762-787	1140	1137-1149
Transom	452	454	906	902-927	960	952-965

372
 89

 461

 423
 42

Sheer						
Station	Height			Allowable Range	Width	
	Starboard	Port	Total		Actual	Allowable Range
1	770	775	1545	1499-1549	920	895-921
2	710	719	1429	1391-1441	1368	1346-1372
3	673	681	1354	1333-1384	1533	1511-1537
4	663	666	1329	1321-1372	1493	1473-1499
5	688	673	1341	1321-1372	1291	1270-1295
Transom	695	698	1393	1384-1435	1039	1022-1048

31446

SCIRA MDS rRe. January 2017

Keel				
Station	Height		Width	
	Actual	Allowable Range	Actual	Allowable Range
400mm	225	223-235		
1	162	162	89	Min 51
2	98	89-101	102	99-105
3	62	51-63	102	99-105
4	66	58-70	102	99-105
5	114	114	102	99-105
Transom	168	166-168	102	99-105

Stem Offset		
up from baseline	back from HDP	Actual
267	267-279	276
305	194-206	201
337	153-165	160
381	108-120	112
457	54-66	62
527	26-38	32
311 to 387	intersection of chine extension	

560
163
397

Miscellaneous					
Measurement	Actual	Allowable Range	Measurement	Actual	Allowable Range
LOA	4736	4711-4737	Chine radius at st. 1	10	Max 19
Horizontal transom offset	211	203-229	Chine radius st. 2 to transom	2	Max 3
Hull Datum Point height	704	683-708	Deck height	127	Max 127
Bow radius	23	Max 25			

Topside Measurements					
Measurement	Actual	Allowable Range	Measurement	Actual	Allowable Range
Aft end of dagg. slot from Hull datum point	2448	2438-2464	Mast step to sheer (vertical)	397	390-400
Top of case parallel to baseline	✓		Mast hole in the deck	60x170	Max 256x76
Aft edge of slot perpendicular to baseline	✓		Length of foredeck	1867	Min 1842
Keel to top of daggerboard case	311	310-313	Length of aft deck	1210	Min 457
Length of daggerboard slot	540	Max 546	Sheer strikes	26	Max 32
Width of daggerboard slot	12	Max 13	Gunwale radius	9	Max 12
Splashboard	557 710	Min 51 x 610			

Measurer **GIORGIO BREBICH**

Stamp nr.

Snipe Class International Racing Association