

SNIFE CLASS RACING ASSOCIATION

MEASUREMENT DATA SHEET

Revised January 2017

For boats built or modified after January 1, 2017

HULL NUMBER	31452	BUILDER	ZELTIC	
MODEL	ZELTIC	YEAR OF MANUFACTURE	2017	
OWNER	ZELTIC	COUNTRY	SPAIN	

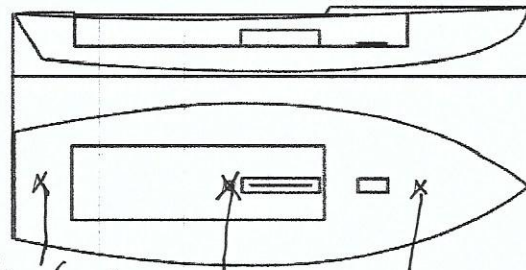
BARE HULL	<input type="checkbox"/>	COMPLETE	<input checked="" type="checkbox"/>	INCOMPLETE	<input type="checkbox"/>
HULL MATERIAL: WOOD	<input type="checkbox"/>	FIBERGLASS	<input checked="" type="checkbox"/>	make note of	
DECK MATERIAL: WOOD	<input type="checkbox"/>	FIBERGLASS	<input checked="" type="checkbox"/>	incomplete items	
FROM CERTIFIED MOULD	<input checked="" type="checkbox"/>				

HULL WEIGHT (min 125kg)	132.7	MAST LENGTH (max 6499mm)	6499
TOTAL WEIGHT (min 172.8kg)	172.8	Limiting marks & pin	OK
CORRECTOR WEIGHTS (max 15kg)	10.0	Corrector weights (max 100gr)	None
MOI	UTM-m ²	BOOM LENGTH (max 2642mm)	2641
Spring #	124	Limiting marks & pin	OK
JIB FITTING	OK	POLE LENGTH (max 2642mm)	2642
(279-300mm hor. From Hull Datum Point)		RUDDER DIMENSIONS	OK
max 45mm vert. above sheerline)		Weight (min. 2.72kg)	2.93
SHROUDS (1778-1981mm from HDP)	1778	Corrector weight (max 250g)	NONE
MAST HOLE (min 1494-mm from HDP)	1494	Parallel to transom (tolerance 2mm)	OK
UPPER GUDGEON (410 +/-3mm)	411	DAGGERBOARD DIMENSIONS	OK
LOWER GUDGEON (155 +/-3mm)	152	Band	OK
GUDGEONS DIAMETER (8-8,5mm)	8.1	Safety line (max 600mm long)	600
		Restraining system	OK

Needs 12mm plate at front

Insert the actual measurement in the cells marked as

Mark ballast position and amount below



DATE MEASURED 9/JUL/2017

MEASURER'S STAMP

MEASURER'S NAME Fernando ~~Torvelo~~ Torvelo

NOTES: MOI measured at World Ch 2017 Ago 4th
 by Pepe Pérez

Snipe Class International Racing Association