

2018

Snipe Class International Racing Association MEASUREMENT CERTIFICATE

Hull number 31460 Year of manufacturer 2018

Builder J/2 Model # 1

Owner _____

Mark ballast here

Country ESP



Weight 127'8

Ballast 4'9



MOI 55.4

Measurer/s ANTONIO CARDONA WS MEASURER

ANTONIO CARDONA ES
ISAF N. LA SURE F
C/ Pegas 5
07609 Bahia Azor (F. Suel)

Date of measurement 5/2/18

Measurer or National Secretary
stamp and signature _____

I hereby agree to all SCIRA rules and by-laws. I agree to notify a SCIRA measurer if any equipment modified, replaced and/or transferred.

SCIRA reserves the right to measure this boat and any equipment at any time.

Owner signature _____

Date _____

THIS CERTIFICATE REMAINS WITH THE OWNER OF THIS
SNIPE. IT CAN BE REPLACED BY REMEASUREMENT.

SCIRA Measuremen Check Sheet

To be used with the 80/20 true baseline measurement frame

Owner _____ Date 5/2/18

Hull 31460 Builder J/2 Material PRF

NEW MOULD: FIRST OR 6 OF 6 CERTIFICATION RENEW Y/N

DO NOT COMPLETE IF FROM A CERTIFIED MOULD

Chine						
	Height				Width	
Station	Starboard	Port	Total	Allowable Range	Actual	Allowable Range
1	283	284	283'5"	838-864	538	527-540
2	230	225	227'5"	724-749	999	991-1003
3	198	196	197	673-699	1239	1232-1245
4	200	202	201	680-705	1275	1270-1283
5	240	250	245	762-787	1140	1137-1149
Transom	305	324	314'5"	902-927	958	952-965

Sheer						
	Height				Width	
Station	Starboard	Port	Total	Allowable Range	Actual	Allowable Range
1	627	630	628'5"	1499-1549	918	895-921
2	568	565	566'5"	1391-1441	1364	1346-1372
3	528	533	530'5"	1333-1384	1513	1511-1537
4	520	526	523	1321-1372	1488	1473-1499
5	519	530	524'5"	1321-1372	1279	1270-1295
Transom	540	568	554	1384-1435	1075	1022-1048

31460

213

Keel				
Station	Height		Width	
	Actual	Allowable Range	Actual	Allowable Range
400mm	225	223-235		
1	162	162	72	Min 51
2	99	89-101	100	99-105
3	60	51-63	100	99-105
4	68	58-70	100	99-105
5	114	114	102	99-105
Transom	167	166-168	100	99-105

Stem Offset		
up from baseline	back from HDP	Actual
267	267-279	271
305	194-206	199
337	153-165	157
381	108-120	108
457	54-66	54
527	26-38	26
311 to 387	intersection of chine extension	

Miscellaneous					
Measurement	Actual	Allowable Range	Measurement	Actual	Allowable Range
LOA	4730	4711-4737	Chine radius at st. 1	✓	Max 19
Horizontal transom offset	220	203-229	Chine radius st. 2 to transom	✓	Max 3
Hull Datum Point height	690	683-708	Deck height	✓	Max 127
Bow radius	✓	Max 25			

Topside Measurements					
Measurement	Actual	Allowable Range	Measurement	Actual	Allowable Range
Aft end of dagg. slot from Hull datum point	2463	2438-2464	Mast step to sheer (vertical)	400	390-400
Top of case parallel to baseline	✓		Mast hole in the deck	256 x 76	Max 256x76
Aft edge of slot perpendicular to baseline	✓		Length of foredeck	1860	Min 1842
Keel to top of daggerboard case	310	310-313	Length of aft deck	890	Min 457
Length of daggerboard slot	540	Max 546	Sheer strikes	✓	Max 32
Width of daggerboard slot	12	Max 13	Gunwale radius	✓	Max 12
Splashboard	51 x 610	Min 51 x 610			

Measurer


 Stamp nr.

313

SNIFE CLASS RACING ASSOCIATION

MEASUREMENT DATA SHEET

Revised January 2017

For boats built or modified after January 1, 2017

HULL NUMBER	31460	BUILDER	J/2
MODEL		YEAR OF MANUFACTURE	2018
OWNER		COUNTRY	Esp

BARE HULL COMPLETE INCOMPLETE

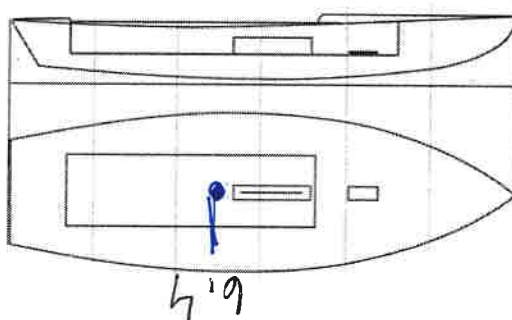
HULL MATERIAL: WOOD FIBERGLASS make note of
 DECK MATERIAL: WOOD FIBERGLASS incomplete items

FROM CERTIFIED MOULD

HULL WEIGHT (min 125kg)	127.8	MAST LENGTH (max 6499mm)	<input checked="" type="checkbox"/>
TOTAL WEIGHT (min 172.8kg)		Limiting marks & pin	<input checked="" type="checkbox"/>
CORRECTOR WEIGHTS (max 15kg)	4.9	Corrector weights (max 100gr)	<input checked="" type="checkbox"/>
MOI	55.4	BOOM LENGTH (max 2642mm)	<input checked="" type="checkbox"/>
Spring #	98	Limiting marks & pin	<input checked="" type="checkbox"/>
JIB FITTING	300	POLE LENGTH (max 2642mm)	<input checked="" type="checkbox"/>
(279-300mm hor. From Hull Datum Point)		RUDDER DIMENSIONS	<input checked="" type="checkbox"/>
max 45mm vert. above sheerline)		Weight (min. 2.72kg)	2.75
SHROUDS (1778-1981mm from HDP)	1925	Corrector weight (max 250g)	<input checked="" type="checkbox"/>
MAST HOLE (min 1494-mm from HDP)	1494	Parallel to transom (tolerance 2mm)	<input checked="" type="checkbox"/>
UPPER GUDGEON (410 +/-3mm)	410	DAGGERBOARD DIMENSIONS	<input checked="" type="checkbox"/>
LOWER GUDGEON (155 +/-3mm)	155	Band	305
GUDGEONS DIAMETER (8-8,5mm)	8	Safety line (max 600mm long)	<input checked="" type="checkbox"/>
		Restraining system	<input checked="" type="checkbox"/>

Insert the actual measurement in the cells marked as

Mark ballast position and amount below



ANTONIO CARDONA ESPIN
 ISAAC LASURER
 C/ Pegas 9
 07609 Bahía Azul (España)

DATE MEASURED 5/2/18 MEASURER'S STAMP

MEASURER'S NAME A CARDONA

NOTES:

WS MEASURER