

# SNIFE CLASS RACING ASSOCIATION

## MEASUREMENT DATA SHEET

Revised March 2018

To be used for all boats. *For measurements in Italic refer to the Class Rules*

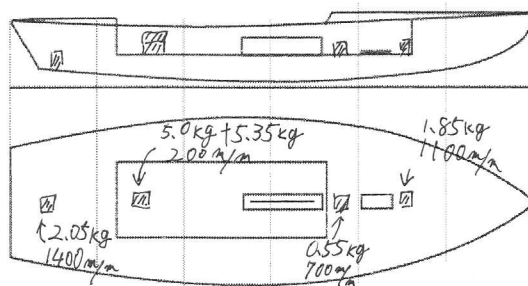
HULL NUMBER	31475	BUILDER	Perisson Marine Japan
MODEL	NINJA	YEAR OF MANUFACTURE	2018
OWNER	Tokyo Dental University	COUNTRY	Japan

BARE HULL	<input type="checkbox"/>	COMPLETE	<input checked="" type="checkbox"/>	INCOMPLETE	<input type="checkbox"/>
HULL MATERIAL: WOOD	<input type="checkbox"/>	FIBERGLASS	<input checked="" type="checkbox"/>	make note of	
DECK MATERIAL: WOOD	<input type="checkbox"/>	FIBERGLASS	<input checked="" type="checkbox"/>	incomplete items	
FROM CERTIFIED MOULD	<input checked="" type="checkbox"/>				

HULL WEIGHT (min 125kg)	134.0	MAST LENGTH (Rules C.9.2, F.3.4)	ok
TOTAL WEIGHT (min 172.8kg)	172.8	Limiting marks & pin	ok
CORRECTOR WEIGHTS (max 15kg)	14.8	Corrector weights (max 100gr)	0
MOI	276	BOOM LENGTH (max 2642mm)	ok
Spring set #	#91	Limiting marks & pin	ok
JIB FITTING	281	POLE LENGTH (max 2642mm)	ok
(279-300mm hor. From Hull Datum Point)		RUDDER DIMENSIONS	ok
max 45mm vert. above sheerline)		Weight (min. 2.72kg)	2.78
SHROUDS (1778-1981mm from HDP)	1779	Corrector weights (Rule C.8.5)	0
MAST HOLE (min 1494-mm from HDP)	1495	Parallel to transom (tolerance 2mm)	ok
UPPER GUDGEON (Rule D.2.3)	410	DAGGERBOARD DIMENSIONS	ok
LOWER GUDGEON (Rule D.2.3)	155	Band	ok
GUDGEONS DIAMETER (Rule D.2.3)	8	Safety line (max 610mm long)	ok
		Restraining system (hooks or tablet)	ok

Insert the actual measurement in the cells marked as

Mark corrector weights position and amount below. Data to be copied on the Official Snipe Label



DATE MEASURED 24. Feb. 2018 MEASURER'S STAMP

MEASURER'S NAME NOBUHIKO KUDARA

NOTES:



31475

### SCIRA Measurement Data Sheet

To be used with the 80/20 true baseline measurement frame

Owner Tokyo Dental University Date 24. Feb. 2018  
 Hull 31475 Builder Persson Marine Japan Material FRP

NEW MOULD: FIRST  OR  OF 5 CERTIFICATION RENEW  Y/N

DO NOT COMPLETE IF FROM A CERTIFIED MOULD

Chine						
	Height				Width	
Station	Starboard	Port	Total	Allowable Range	Actual	Allowable Range
1	424	427	851	838-864	529	527-540
2	371	372	743	724-749	996	991-1003
3	346	342.5	688.5	673-699	1236	1232-1245
4	348	344	692	680-705	1276	1270-1283
5	388	385	773	762-787	1143	1137-1149
Transom	459	461	920	902-927	957	952-965

Sheer						
	Height				Width	
Station	Starboard	Port	Total	Allowable Range	Actual	Allowable Range
1	769	769	1538	1499-1549	914	895-921
2	708	708	1416	1391-1441	1358	1346-1372
3	676	677	1353	1333-1384	1518	1511-1537
4	662	664	1326	1321-1372	1474	1473-1499
5	669	667	1336	1321-1372	1272	1270-1295
Transom	697	698.5	1395.5	1384-1435	1025	1022-1048

Keel				
Station	Height		Width	
	Actual	Allowable Range	Actual	Allowable Range
400mm	225	223-235		
1	162	162	75	Min 51
2	93	89-101	101	99-105
3	55	51-63	101	99-105
4	68.5	58-70	101	99-105
5	114	114	101	99-105
Transom	167	166-168	101	99-105

Stem Offset		
up from baseline	back from HDP	Actual
267	267-279	271
305	194-206	196
337	153-165	156
381	108-120	111
457	54-66	57
527	26-38	28
311 to 387	intersection of chine extension -	

Miscellaneous					
Measurement	Actual	Allowable Range	Measurement	Actual	Allowable Range
LOA	4733	4711-4737	Chine radius at st. 1	ok	Max 19
Horizontal transom offset	220	203-229	Chine radius st. 2 to transom	ok	Max 3
Hull Datum Point height	701	683-708	Deck height	ok	Max 127
Bow radius	ok	Max 25			

Topside Measurements					
Measurement	Actual	Allowable Range	Measurement	Actual	Allowable Range
Aft end of dagg. slot from Hull datum point	2451	2438-2464	Mast step to sheer (vertical)	393	390-400
Top of case parallel to baseline	376.5		Mast hole in the deck	137x60	Max 256x76
Aft edge of slot perpendicular to baseline	373		Length of foredeck	1845	Min 1842
Keel to top of daggerboard case	311	310-313	Length of aft deck	1204	Min 457
Length of daggerboard slot	535	Max 546	Sheer strikes	ok	Max 32
Width of daggerboard slot	12	Max 13	Gunwale radius	ok	Max 12
Splashboard	52 x 955	Min 51 x 610			

Measurer NOBUHIKO KUDARA

Stamp nr. **J1** SCIRA MEASURE JAPAN