

Snipe Class International Racing Association
MEASUREMENT CERTIFICATE

Hull number 31478 Year of manufacture 2018

Builder DB MARINE Model # BB R1

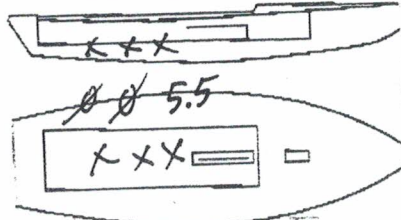
Owner DB MARINE

Country ITALY Mark ballast here

Weight 172.8

Ballast 5.5

MOI 127.6



Measurer/s GIORGIO BREZICH

Date of measurement 09.06.2018 ITALY

Measurer or National Secretary
stamp and signature _____

I hereby agree to all SCIRA rules and by-laws. I agree to notify SCIRA measurer if any equipment modified, replaced and/or transferred.
SCIRA reserves the right to measure this boat and any equipment at any time.

Owner signature _____

Date _____

THIS CERTIFICATE REMAINS WITH THE OWNER OF THIS
SNIPE. IT CAN BE REPLACED BY REMEASUREMENT.

SNIPE CLASS RACING ASSOCIATION

MEASUREMENT DATA SHEET

Revised January 2017

For boats built or modified after January 1, 2017

HULL NUMBER	31478	BUILDER	DB MARINE
MODEL	DB-R1	YEAR OF MANUFACTURE	2018
OWNER	DB MARINE	COUNTRY	ITALY

BARE HULL COMPLETE INCOMPLETE

HULL MATERIAL: WOOD FIBERGLASS make note of incomplete items

DECK MATERIAL: WOOD FIBERGLASS

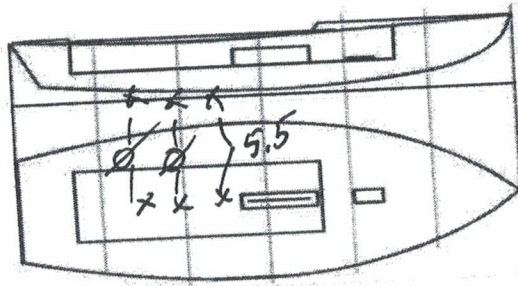
FROM CERTIFIED MOULD

HULL WEIGHT (min 125kg)	<input checked="" type="checkbox"/>	MAST LENGTH (max 6499mm)	<input type="checkbox"/>
TOTAL WEIGHT (min 172.8kg)	<input checked="" type="checkbox"/>	Limiting marks & pin	<input type="checkbox"/>
CORRECTOR WEIGHTS (max 15kg)	5.5	Corrector weights (max 100gr)	<input type="checkbox"/>
MOI	>27.6	BOOM LENGTH (max 2642mm)	<input type="checkbox"/>
Spring #		Limiting marks & pin	<input type="checkbox"/>
JIB FITTING	280	POLE LENGTH (max 2642mm)	<input checked="" type="checkbox"/>
(279-300mm hor. From Hull Datum Point)		RUDDER DIMENSIONS	<input type="checkbox"/>
max 45mm vert. above sheerline)		Weight (min. 2.72kg)	2.90
SHROUDS (1778-1981mm from HDP)	1783	Corrector weight (max 250g)	<input checked="" type="checkbox"/>
MAST HOLE (min 1494-mm from HDP)	+84	Parallel to transom (tolerance 2mm)	<input checked="" type="checkbox"/>
UPPER GUDGEON (410 +/-3mm)	413	DAGGERBOARD DIMENSIONS	<input checked="" type="checkbox"/>
LOWER GUDGEON (155 +/-3mm)	156	Band	<input checked="" type="checkbox"/>
GUDGEONS DIAMETER (8-8,5mm)	8	Safety line (max 600mm long)	600
		Restraining system	<input checked="" type="checkbox"/>

538
537
538

Insert the actual measurement in the cells marked as

Mark ballast position and amount below



DATE MEASURED 09.05.2018 MEASURER'S STAMP

MEASURER'S NAME GIORGIO BRZICCA

NOTES:

01 SCIRA
MEASURER
ITALY

SCIRA Measuremen Check Sheet

To be used with the 80/20 true baseline measurement frame

Owner DB MARINE SAS Date 09/05/2018
 Hull 31478 Builder DB MARINE SAS Material FIBERGLASS

NEW MOULD: FIRST OR OF 5 CERTIFICATION RENEW Y/N
 DO NOT COMPLETE IF FROM A CERTIFIED MOULD

Chine						
Station	Height				Width	
	Starboard	Port	Total	Allowable Range	Actual	Allowable Range
1				838-864		527-540
2				724-749		991-1003
3				673-699		1232-1245
4				680-705		1270-1283
5				762-787		1137-1149
Transom				902-927		952-965

Sheer						
Station	Height				Width	
	Starboard	Port	Total	Allowable Range	Actual	Allowable Range
1				1499-1549		895-921
2				1391-1441		1346-1372
3				1333-1384		1511-1537
4				1321-1372		1473-1499
5				1321-1372		1270-1295
Transom				1384-1435		1022-1048



31478

SCIRA MDS rRe. January 2017

Keel				
Station	Height		Width	
	Actual	Allowable Range	Actual	Allowable Range
400mm		223-235		
1		162		Min 51
2		89-101		99-105
3		51-63		99-105
4		58-70		99-105
5		114		99-105
Transom		166-168		99-105

Stem Offset		
up from baseline	back from HDP	Actual
267	267-279	
305	194-206	
337	153-165	
381	108-120	
457	54-66	
527	26-38	
311 to 387	intersection of chine extension	

Miscellaneous					
Measurement	Actual	Allowable Range	Measurement	Actual	Allowable Range
LOA		4711-4737	Chine radius at st. 1		Max 19
Horizontal transom offset		203-229	Chine radius st. 2 to transom		Max 3
Hull Datum Point height		683-708	Deck height		Max 127
Bow radius		Max 25			

Topside Measurements					
Measurement	Actual	Allowable Range	Measurement	Actual	Allowable Range
Aft end of dagg. slot from Hull datum point	✓	2438-2464	Mast step to sheer (vertical)	398	390-400
Top of case parallel to baseline	✓		Mast hole in the deck		Max 256x76
Aft edge of slot perpendicular to baseline	✓		Length of foredeck		Min 1842
Keel to top of daggerboard case	311	310-313	Length of aft deck		Min 457
Length of daggerboard slot	540	Max 546	Sheer strikes		Max 32
Width of daggerboard slot	12	Max 13	Gunwale radius		Max 12
Splashboard	✓	Min 51 x 610			

01 SCIRA
MEASURER
ITALY

Measurer **GIORGIO BREZICH**

Stamp nr.

Snipe Class International Racing Association