

31480

SNIFE CLASS RACING ASSOCIATION

MEASUREMENT DATA SHEET

Revised March 2018

To be used for all boats. For measurements in *Italic* refer to the Class Rules

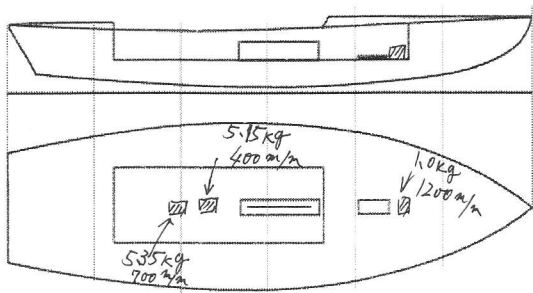
HULL NUMBER	31480	BUILDER	Pereson Marine Japan
MODEL	NINJA	YEAR OF MANUFACTURE	2018
OWNER	Yasichi Yamamoto	COUNTRY	Japan

BARE HULL	<input type="checkbox"/>	COMPLETE	<input checked="" type="checkbox"/>	INCOMPLETE	<input type="checkbox"/>
HULL MATERIAL: WOOD	<input type="checkbox"/>	FIBERGLASS	<input checked="" type="checkbox"/>	make note of	
DECK MATERIAL: WOOD	<input type="checkbox"/>	FIBERGLASS	<input checked="" type="checkbox"/>	incomplete items	
FROM CERTIFIED MOULD	<input checked="" type="checkbox"/>				

HULL WEIGHT (min 125kg)	ok	MAST LENGTH (Rules C.9.2, F.3.4)	ok
TOTAL WEIGHT (min 172.8kg)	172.8	Limiting marks & pin	ok
CORRECTOR WEIGHTS (max 15kg)	11.5	Corrector weights (max 100gr)	0
MOI	27.6	BOOM LENGTH (max 2642mm)	ok
Spring set #	# 91	Limiting marks & pin	ok
JIB FITTING	ok	POLE LENGTH (max 2642mm)	ok
(279-300mm hor. From Hull Datum Point)		RUDDER DIMENSIONS	ok
max 45mm vert. above sheerline)		Weight (min. 2.72kg)	2.74
SHROUDS (1778-1981mm from HDP)	ok	Corrector weights (Rule C.8.5)	0
MAST HOLE (min 1494-mm from HDP)	ok	Parallel to transom (tolerance 2mm)	ok
UPPER GUDGEON (Rule D.2.3)	ok	DAGGERBOARD DIMENSIONS	ok
LOWER GUDGEON (Rule D.2.3)	ok	Band	ok
GUDGEONS DIAMETER (Rule D.2.3)	8mm	Safety line (max 610mm long)	ok
		Restraining system (hooks or tablet)	ok

Insert the actual measurement in the cells marked as

Mark corrector weights position and amount below. Data to be copied on the Official Snipe Label



DATE MEASURED 17. Mar. 2018 MEASURER'S STAMP

MEASURER'S NAME NOBUHIKO KUDARA

NOTES:



SCIRA Measurement Data Sheet

To be used with the 80/20 true baseline measurement frame

Owner Yuichi Yamamoto Date 17. Mar. 2018
 Hull 31480 Builder Persson Marine Japan Material FRP

NEW MOULD: FIRST OR OF 5 CERTIFICATION RENEW Y/N

DO NOT COMPLETE IF FROM A CERTIFIED MOULD

Chine						
Station	Height			Width		
	Starboard	Port	Total	Allowable Range	Actual	Allowable Range
1				838-864		527-540
2				724-749		991-1003
3			ok	673-699	ok	1232-1245
4				680-705		1270-1283
5				762-787		1137-1149
Transom				902-927		952-965

Sheer						
Station	Height			Width		
	Starboard	Port	Total	Allowable Range	Actual	Allowable Range
1				1499-1549		895-921
2				1391-1441		1346-1372
3			ok	1333-1384	ok	1511-1537
4				1321-1372		1473-1499
5				1321-1372		1270-1295
Transom				1384-1435		1022-1048



Keel				
Station	Height		Width	
	Actual	Allowable Range	Actual	Allowable Range
400mm		223-235		
1		162		Min 51
2		89-101		99-105
3	Yole	51-63	Yole	99-105
4		58-70		99-105
5		114		99-105
Transom		166-168		99-105

Stem Offset		
up from baseline	back from HDP	Actual
267	267-279	
305	194-206	
337	153-165	Yole
381	108-120	
457	54-66	
527	26-38	
311 to 387	intersection of chine extension	

Miscellaneous					
Measurement	Actual	Allowable Range	Measurement	Actual	Allowable Range
LOA		4711-4737	Chine radius at st. 1		Max 19
Horizontal transom offset	Yole	203-229	Chine radius st. 2 to transom	Yole	Max 3
Hull Datum Point height		683-708	Deck height		Max 127
Bow radius		Max 25			

Topside Measurements					
Measurement	Actual	Allowable Range	Measurement	Actual	Allowable Range
Aft end of dagg. slot from Hull datum point		2438-2464	Mast step to sheer (vertical)		390-400
Top of case parallel to baseline			Mast hole in the deck		Max 256x76
Aft edge of slot perpendicular to baseline	Yole		Length of foredeck		Min 1842
Keel to top of daggerboard case		310-313	Length of aft deck	Yole	Min 457
Length of daggerboard slot		Max 546	Sheer strikes		Max 32
Width of daggerboard slot		Max 13	Gunwale radius		Max 12
Splashboard		Min 51 x 610			

Measurer *NOBOHIKO KUDARA*

Stamp nr. **J1** SCIRA
MEASURE
JAPAN