

31503

SNIFE CLASS RACING ASSOCIATION

MEASUREMENT DATA SHEET


Revised March 2018

To be used for all boats. *For measurements in Italic refer to the Class Rules*

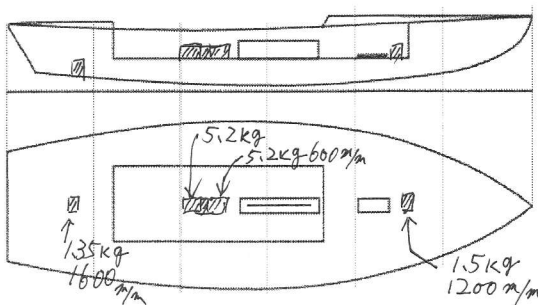
HULL NUMBER	31503	BUILDER	Persson Marine Japan
MODEL	NINJA	YEAR OF MANUFACTURE	2018
OWNER	Okayama University	COUNTRY	Japan

BARE HULL	<input type="checkbox"/>	COMPLETE	<input checked="" type="checkbox"/>	INCOMPLETE	<input type="checkbox"/>
HULL MATERIAL: WOOD	<input type="checkbox"/>	FIBERGLASS	<input checked="" type="checkbox"/>	make note of	
DECK MATERIAL: WOOD	<input type="checkbox"/>	FIBERGLASS	<input checked="" type="checkbox"/>	incomplete items	
FROM CERTIFIED MOULD	<input checked="" type="checkbox"/>				

HULL WEIGHT (min 125kg)	ok	MAST LENGTH (Rules C.9.2, F.3.4)	ok
TOTAL WEIGHT (min 172.8kg)	172.8	Limiting marks & pin	ok
CORRECTOR WEIGHTS (max 15kg)	13.25	Corrector weights (max 100gr)	0
MOI	27.6	BOOM LENGTH (max 2642mm)	ok
Spring set #	#90	Limiting marks & pin	ok
JIB FITTING	ok	POLE LENGTH (max 2642mm)	ok
(279-300mm hor. From Hull Datum Point)		RUDDER DIMENSIONS	ok
max 45mm vert. above sheerline)		Weight (min. 2.72kg)	2.78
SHROUDS (1778-1981mm from HDP)	ok	Corrector weights (Rule C.8.5)	0
MAST HOLE (min 1494-mm from HDP)	ok	Parallel to transom (tolerance 2mm)	ok
UPPER GUDGEON (Rule D.2.3)	ok	DAGGERBOARD DIMENSIONS	ok
LOWER GUDGEON (Rule D.2.3)	ok	Band	ok
GUDGEONS DIAMETER (Rule D.2.3)	Shur	Safety line (max 610mm long)	ok
		Restraining system (hooks or tablet)	ok

Insert the actual measurement in the cells marked as 

Mark corrector weights position and amount below. Data to be copied on the Official Snipe Label



DATE MEASURED 19 Jun 2018 MEASURER'S STAMP

MEASURER'S NAME NOBUHIKO KUPARA

NOTES:



31503

SCIRA Measurement Data Sheet

To be used with the 80/20 true baseline measurement frame

Owner Okayama University Date 19 Jun 2018
 Hull 31503 Builder Persson Marine Japan Material FRP

NEW MOULD: FIRST OR OF 5 CERTIFICATION RENEW Y/N

DO NOT COMPLETE IF FROM A CERTIFIED MOULD

Chine						
Station	Height				Width	
	Starboard	Port	Total	Allowable Range	Actual	Allowable Range
1				838-864		527-540
2				724-749		991-1003
3			ok	673-699	ok	1232-1245
4				680-705		1270-1283
5				762-787		1137-1149
Transom				902-927		952-965

Sheer						
Station	Height				Width	
	Starboard	Port	Total	Allowable Range	Actual	Allowable Range
1				1499-1549		895-921
2				1391-1441		1346-1372
3			ok	1333-1384	ok	1511-1537
4				1321-1372		1473-1499
5				1321-1372		1270-1295
Transom				1384-1435		1022-1048



Keel				
Station	Height		Width	
	Actual	Allowable Range	Actual	Allowable Range
400mm		223-235		
1		162		Min 51
2		89-101		99-105
3	ok	51-63	ok	99-105
4		58-70		99-105
5		114		99-105
Transom		166-168		99-105

Stem Offset		
up from baseline	back from HDP	Actual
267	267-279	
305	194-206	
337	153-165	ok
381	108-120	
457	54-66	
527	26-38	
311 to 387	intersection of chine extension	

Miscellaneous					
Measurement	Actual	Allowable Range	Measurement	Actual	Allowable Range
LOA		4711-4737	Chine radius at st. 1		Max 19
Horizontal transom offset	ok	203-229	Chine radius st. 2 to transom	ok	Max 3
Hull Datum Point height		683-708	Deck height		Max 127
Bow radius		Max 25			

Topside Measurements					
Measurement	Actual	Allowable Range	Measurement	Actual	Allowable Range
Aft end of dagg. slot from Hull datum point		2438-2464	Mast step to sheer (vertical)		390-400
Top of case parallel to baseline			Mast hole in the deck		Max 256x76
Aft edge of slot perpendicular to baseline			Length of foredeck		Min 1842
Keel to top of daggerboard case	ok	310-313	Length of aft deck	ok	Min 457
Length of daggerboard slot		Max 546	Sheer strikes		Max 32
Width of daggerboard slot		Max 13	Gunwale radius		Max 12
Splashboard		Min 51 x 610			

Measurer *NOBUHIKO KUDARA*

Stamp nr. **J1** SCIRA MEASURE JAPAN