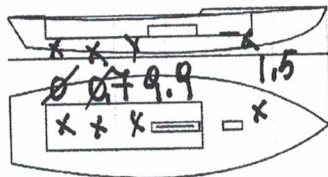




Snipe Class International Racing Association
Class Measurement Certificate

Hull Number 31504 Year of Manufacturer 2018
 Builder DB MARINE Model DB R1
 Weight 172.8
 Corrector weights 12.1
 Boat builder SIDEXINDER
 Corrector weights 0
 DI value 727.6

Mark corrector weights here



Owner DB MARINE
 Country ITALY
 Measurer/s GIORGIO BREZZI SCIRA stamp # 1110
 Date of measurement 15.6.2018 ITALY

This certificate is not valid until signed and stamped by the N.S. This certificate indicates that the boat has a registered MDS on file in the SCIRA office.

National Secretary signature _____

I hereby agree to all SCIRA rules and bylaws. I agree to notify a SCIRA measurer if any equipment is modified, replaced and/or transferred to proceed to a new measurement. SCIRA reserves the right to measure this boat and any equipment at any time.

Owner signature _____

Date _____

**THIS CERTIFICATE REMAINS WITH THE OWNER OF THIS SNIPE.
 IT CAN BE REPLACED BY REMEASUREMENT**

SNIFE CLASS RACING ASSOCIATION

MEASUREMENT DATA SHEET

Revised January 2017

For boats built or modified after January 1, 2017

HULL NUMBER	31504	BUILDER	DB MARINE SAS
MODEL	DB-R1	YEAR OF MANUFACTURE	2018
OWNER	DB MARINE SAS	COUNTRY	ITALY

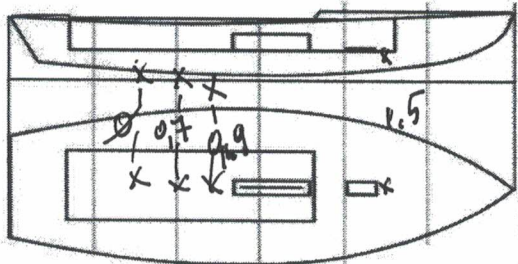
BARE HULL	<input type="checkbox"/>	COMPLETE	<input checked="" type="checkbox"/>	INCOMPLETE	<input type="checkbox"/>
HULL MATERIAL: WOOD	<input type="checkbox"/>	FIBERGLASS	<input checked="" type="checkbox"/>	make note of	
DECK MATERIAL: WOOD	<input type="checkbox"/>	FIBERGLASS	<input checked="" type="checkbox"/>	incomplete items	
FROM CERTIFIED MOULD	<input type="checkbox"/>				

HULL WEIGHT (min 125kg)	<input checked="" type="checkbox"/>	MAST LENGTH (max 6499mm)	<input checked="" type="checkbox"/>
TOTAL WEIGHT (min 172.8kg)	172.8	Limiting marks & pin	<input checked="" type="checkbox"/>
CORRECTOR WEIGHTS (max 15kg)	12.1	Corrector weights (max 100gr)	<input checked="" type="checkbox"/>
MOI	927.6	BOOM LENGTH (max 2642mm)	<input checked="" type="checkbox"/>
Spring #	126	Limiting marks & pin	<input checked="" type="checkbox"/>
JIB FITTING	287	POLE LENGTH (max 2642mm)	<input checked="" type="checkbox"/>
(279-300mm hor. From Hull Datum Point)		RUDDER DIMENSIONS	<input checked="" type="checkbox"/>
max 45mm vert. above sheerline)		Weight (min. 2.72kg)	2.8
SHROUDS (1778-1981mm from HDP)	1783	Corrector weight (max 250g)	<input checked="" type="checkbox"/>
MAST HOLE (min 1494-mm from HDP)	<input checked="" type="checkbox"/>	Parallel to transom (tolerance 2mm)	<input checked="" type="checkbox"/>
UPPER GUDGEON (410 +/-3mm)	410	DAGGERBOARD DIMENSIONS	<input checked="" type="checkbox"/>
LOWER GUDGEON (155 +/-3mm)	155	Band	<input checked="" type="checkbox"/>
GUDGEONS DIAMETER (8-8,5mm)	8	Safety line (max 600mm long)	59
		Restraining system	<input checked="" type="checkbox"/>

5231
5229
5240

Insert the actual measurement in the cells marked as

Mark ballast position and amount below



DATE MEASURED 15.06.2018 MEASURER'S STAMP

MEASURER'S NAME GIORGIO BREZICH

NOTES:

SCIRA MEASURER ITALY
Snipe Class International Racing Association

SCIRA Measuremen Check Sheet

To be used with the 80/20 true baseline measurement frame

Owner DB MARINE SAS Date 15/06/18
 Hull 31504 Builder DB MARINE SAS Material FB

NEW MOULD: FIRST OR OF 5 CERTIFICATION RENEW Y/N

DO NOT COMPLETE IF FROM A CERTIFIED MOULD

Chine						
	Height				Width	
Station	Starboard	Port	Total	Allowable Range	Actual	Allowable Range
1				838-864		527-540
2				724-749		991-1003
3				673-699		1232-1245
4				680-705		1270-1283
5				762-787		1137-1149
Transom				902-927		952-965

Sheer						
	Height				Width	
Station	Starboard	Port	Total	Allowable Range	Actual	Allowable Range
1				1499-1549		895-921
2				1391-1441		1346-1372
3				1333-1384		1511-1537
4				1321-1372		1473-1499
5				1321-1372		1270-1295
Transom				1384-1435		1022-1048



31504

Keel				
Station	Height		Width	
	Actual	Allowable Range	Actual	Allowable Range
400mm		223-235		
1		162		Min 51
2		89-101		99-105
3		51-63		99-105
4		58-70		99-105
5		114		99-105
Transom		166-168		99-105

Stem Offset		
up from baseline	back from HDP	Actual
267	267-279	
305	194-206	
337	153-165	
381	108-120	
457	54-66	
527	26-38	
311 to 387	intersection of chine extension	

559
162

397

Miscellaneous					
Measurement	Actual	Allowable Range	Measurement	Actual	Allowable Range
LOA		4711-4737	Chine radius at st. 1		Max 19
Horizontal transom offset		203-229	Chine radius st. 2 to transom		Max 3
Hull Datum Point height		683-708	Deck height		Max 127
Bow radius		Max 25			

Topside Measurements					
Measurement	Actual	Allowable Range	Measurement	Actual	Allowable Range
Aft end of dagg. slot from Hull datum point	✓	2438-2464	Mast step to sheer (vertical)	397	390-400
Top of case parallel to baseline	✓	✓	Mast hole in the deck	✓	Max 256x76
Aft edge of slot perpendicular to baseline	✓	✓	Length of foredeck	✓	Min 1842
Keel to top of daggerboard case	312	310-313	Length of aft deck	✓	Min 457
Length of daggerboard slot	✓	Max 546	Sheer strikes	✓	Max 32
Width of daggerboard slot	✓	Max 13	Gunwale radius	✓	Max 12
Splashboard	✓	Min 51 x 610			

Measurer **GIORGIO BREZICH**

Stamp nr.

SCIRA
MEASURER
ITALY