

# Snipe Class International Racing Association MEASUREMENT CERTIFICATE

31510

Hull number 31510 Year of manufacture 2018

Builder J/2 Model # \_\_\_\_\_

Owner \_\_\_\_\_

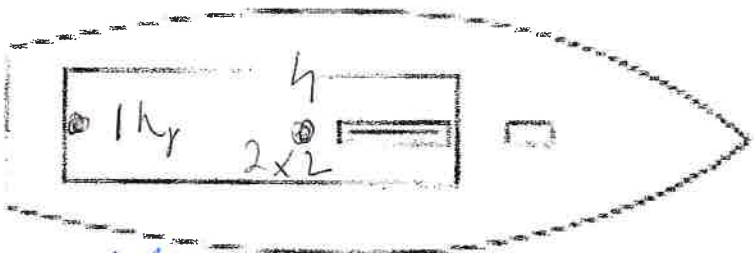
Mark ballast here

Country ESP



Weight 172'8

Ballast 5



MOI 55.4

Measurer/s

*AC*

ANTONIO CARDONA E.  
ISAF N. ASUREP  
C/ Pegas 9  
07609 Babia Azul (España)

Date of measurement 5/6/18

Measurer or National Secretary  
stamp and signature \_\_\_\_\_

I hereby agree to all SCIRA rules and by-laws. I agree to notify a SCIRA measurer if any equipment modified, replaced and/or transferred.

SCIRA reserves the right to measure this boat and any equipment at any time.

Owner signature \_\_\_\_\_

Date \_\_\_\_\_

THIS CERTIFICATE REMAINS WITH THE OWNER OF THIS  
SNIPE. IT CAN BE REPLACED BY REMEASUREMENT.

### SCIRA Measurement Data Sheet

To be used with the 80/20 true baseline measurement frame

Owner \_\_\_\_\_ Date 2/6/18  
 Hull 31510 Builder Y/Z 8 Material \_\_\_\_\_

NEW MOULD: FIRST  OR  OF ~~X~~ CERTIFICATION RENEW  Y/N

DO NOT COMPLETE IF FROM A CERTIFIED MOULD

Chine						
	Height				Width	
Station	Starboard	Port	Total	Allowable Range	Actual	Allowable Range
1	285	286	285.5	838-864	538	527-540
2	231	227	229	724-749	994	991-1003
3	199	197	198	673-699	1235	1232-1245
4	201	201	201	680-705	1271	1270-1283
5	240	251	245.5	762-787	1145	1137-1149
Transom	305	324	314.5	902-927	960	952-965

Sheer						
	Height				Width	
Station	Starboard	Port	Total	Allowable Range	Actual	Allowable Range
1	633	632	632.5	1499-1549	915	895-921
2	570	562	566	1391-1441	1363	1346-1372
3	534	532	533	1333-1384	1515	1511-1537
4	522	521	521.5	1321-1372	1478	1473-1499
5	523	532	527.5	1321-1372	1274	1270-1295
Transom			555	1384-1435	1023	1022-1048

*[Signature]*  
 SCIRA CHIEF MEASURER

*[Signature]*  
 ANTONIO CARDONA E. PH  
 SAFAI ASHER K  
 Snipe Class International Racing Association  
 Oradú Bahía Azul (España)

<b>Keel</b>				
Station	Height		Width	
	Actual	Allowable Range	Actual	Allowable Range
100mm	225	223-235		
1	162	162	72	Min 51
2	100	89-101	100	99-105
3	60	51-63	100	99-105
4	60	58-70	100	99-105
5	113	114	102	99-105
Transom	167	166-168	100	99-105

<b>Stem Offset</b>		
up from baseline	back from HDP	Actual
267	267-279	271
305	104-206	199
337	153-165	154
381	108-120	109
457	54-66	55
527	26-38	26
311 to 387	intersection of chine extension	

<b>Miscellaneous</b>					
Measurement	Actual	Allowable Range	Measurement	Actual	Allowable Range
LOA	4730	4711-4737	Chine radius at st. 1	✓	Max 19
Horizontal transom offset	219	203-229	Chine radius st. 2 to transom	✓	Max 3
Hull Datum Point height	690	683-708	Deck height	✓	Max 127
Bow radius	✓	Max 25			

<b>Topside Measurements</b>					
Measurement	Actual	Allowable Range	Measurement	Actual	Allowable Range
Aft end of dagg. slot from Hull datum point	2463	2438-2464	Mast step to sheer (vertical)	400	390-400
Top of case parallel to baseline	✓		Mast hole in the deck	256x276	Max 256x76
Aft edge of slot perpendicular to baseline	✓		Length of foredeck	1860	Min 1842
Keel to top of daggerboard case	310	310-313	Length of aft deck	890	Min 457
Length of daggerboard slot	540	Max 546	Sheer strikes	✓	Max 32
Width of daggerboard slot	12	Max 13	Gunwale radius	✓	Max 12
Splashboard	51x610	Min 51 x 610			

  
 Measurer  
**SCIRA CHIEF MEASURER**

  
 ANTONIO CARDONA  
 ISAF  
 Stamp nr.

# SNIFE CLASS RACING ASSOCIATION

## MEASUREMENT DATA SHEET

Revised March 2018

To be used for all boats. For measurements in *Italic* refer to the *Class Rules*

HULL NUMBER	<input type="text"/>	BUILDER	<input type="text"/>
MODIFI	<input type="text"/>	YEAR OF MANUFACTURE	<input type="text"/>
OWNER	<input type="text"/>	COUNTRY	<input type="text"/>

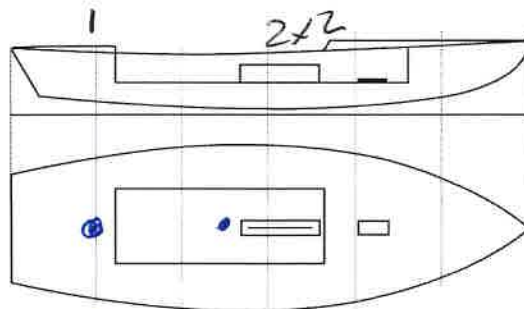
BARE HULL	<input type="checkbox"/>	COMPLETE	<input type="checkbox"/>	INCOMPLETE	<input type="checkbox"/>
HULL MATERIAL: WOOD	<input type="checkbox"/>	FIBERGLASS	<input type="checkbox"/>	make note of	
DECK MATERIAL: WOOD	<input type="checkbox"/>	FIBERGLASS	<input type="checkbox"/>	incomplete items	
FROM CERTIFIED MOULD	<input type="checkbox"/>				

168

HULL WEIGHT (min 125kg)	130.2	MAST LENGTH (Rules C.9.2, F.3.4)	<input type="text"/>
TOTAL WEIGHT (min 172.8kg)	172.8	Limiting marks & pin	<input type="text"/>
CORRECTOR WEIGHTS (max 15kg)	5	Corrector weights (max 100gr)	<input type="text"/>
MOI	55.4	BOOM LENGTH (max 2642mm)	<input type="text"/>
Spring set #	98	Limiting marks & pin	<input type="text"/>
JIB FITTING	<input type="text"/>	POLE LENGTH (max 2642mm)	<input type="text"/>
(279-300mm hor. From Hull Datum Point)		RUDDER DIMENSIONS	<input type="text"/>
max 45mm vert. above sheerline)		Weight (min. 2.72kg)	275
SHROUDS (1778-1981mm from HDP)	<input type="text"/>	Corrector weights (Rule C.8.5)	<input type="text"/>
MAST HOLE (min 1494-mm from HDP)	<input type="text"/>	Parallel to transom (tolerance 2mm)	<input type="text"/>
UPPER GUDGEON (Rule D.2.3)	<input type="text"/>	DAGGERBOARD DIMENSIONS	<input type="text"/>
LOWER GUDGEON (Rule D.2.3)	<input type="text"/>	Band	90
GUDGEONS DIAMETER (Rule D.2.3)	<input type="text"/>	Safety line (max 610mm long)	<input type="text"/>
		Restraining system (hooks or tablet)	<input type="text"/>

Insert the actual measurement in the cells marked as

Mark corrector weights position and amount below. Data to be copied on the Official Snipe Label



DATE MEASURED 5/6/18

MEASURER'S STAMP

ANTONIO CARDONA E.  
ISAF R. SURF  
07609 C/ Pinar 9  
Bañal Abul (España)

MEASURER'S NAME \_\_\_\_\_

NOTES: