

SNIFE CLASS RACING ASSOCIATION

MEASUREMENT DATA SHEET

Revised March 2018

To be used for all boats. For measurements in *Italic* refer to the Class Rules

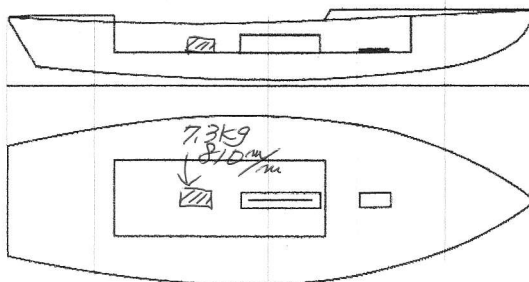
HULL NUMBER	31521	BUILDER	Tsujiido Kako Co.Ltd.
MODEL	Tsujiido	YEAR OF MANUFACTURE	2018
OWNER	SHOYAN Sunny side	COUNTRY	Japan

BARE HULL	<input type="checkbox"/>	COMPLETE	<input checked="" type="checkbox"/>	INCOMPLETE	<input type="checkbox"/>
HULL MATERIAL: WOOD	<input type="checkbox"/>	FIBERGLASS	<input checked="" type="checkbox"/>	make note of	
DECK MATERIAL: WOOD	<input type="checkbox"/>	FIBERGLASS	<input checked="" type="checkbox"/>	incomplete items	
FROM CERTIFIED MOULD	<input checked="" type="checkbox"/>				

HULL WEIGHT (min 125kg)	<input type="text" value="OK"/>	MAST LENGTH (Rules C.9.2, F.3.4)	<input type="text" value="OK"/>
TOTAL WEIGHT (min 172.8kg)	<input type="text" value="172.8"/>	Limiting marks & pin	<input type="text" value="OK"/>
CORRECTOR WEIGHTS (max 15kg)	<input type="text" value="7.3"/>	Corrector weights (max 100gr)	<input type="text" value="0"/>
MOI	<input type="text" value="27.6"/>	BOOM LENGTH (max 2642mm)	<input type="text" value="OK"/>
Spring set #	<input type="text" value="OK"/>	Limiting marks & pin	<input type="text" value="OK"/>
JIB FITTING	<input type="text" value="OK"/>	POLE LENGTH (max 2642mm)	<input type="text" value="OK"/>
(279-300mm hor. From Hull Datum Point)		RUDDER DIMENSIONS	<input type="text" value="OK"/>
max 45mm vert. above sheerline)		Weight (min. 2.72kg)	<input type="text" value="3.0"/>
SHROUDS (1778-1981mm from HDP)	<input type="text" value="OK"/>	Corrector weights (Rule C.8.5)	<input type="text" value="0.0"/>
MAST HOLE (min 1494-mm from HDP)	<input type="text" value="OK"/>	Parallel to transom (tolerance 2mm)	<input type="text" value="OK"/>
UPPER GUDGEON (Rule D.2.3)	<input type="text" value="OK"/>	DAGGERBOARD DIMENSIONS	<input type="text" value="OK"/>
LOWER GUDGEON (Rule D.2.3)	<input type="text" value="OK"/>	Band	<input type="text" value="OK"/>
GUDGEONS DIAMETER (Rule D.2.3)	<input type="text" value="OK"/>	Safety line (max 610mm long)	<input type="text" value="OK"/>
		Restraining system (hooks or tablet)	<input type="text" value="OK"/>

Insert the actual measurement in the cells marked as

Mark corrector weights position and amount below. Data to be copied on the Official Snipe Label



DATE MEASURED 7 Jun 2018 MEASURER'S STAMP

MEASURER'S NAME NOBUHIKO KUDARA

NOTES:



3152/

SCIRA Measurement Data Sheet

To be used with the 80/20 true baseline measurement frame

Owner SHONAN Sunny Side Date 7 Jun. 2018

Hull 3152/ Builder TsujidoKako Co. Ltd Material FRP

NEW MOULD: FIRST OR OF 5 CERTIFICATION RENEW Y/N

DO NOT COMPLETE IF FROM A CERTIFIED MOULD

Chine						
Station	Height				Width	
	Starboard	Port	Total	Allowable Range	Actual	Allowable Range
1			} OK	838-864	} OK	527-540
2				724-749		991-1003
3				673-699		1232-1245
4				680-705		1270-1283
5				762-787		1137-1149
Transom				902-927		952-965

Sheer						
Station	Height				Width	
	Starboard	Port	Total	Allowable Range	Actual	Allowable Range
1			} OK	1499-1549	} OK	895-921
2				1391-1441		1346-1372
3				1333-1384		1511-1537
4				1321-1372		1473-1499
5				1321-1372		1270-1295
Transom				1384-1435		1022-1048



Keel				
Station	Height		Width	
	Actual	Allowable Range	Actual	Allowable Range
400mm		223-235		
1		162		Min 51
2		89-101		99-105
3		51-63		99-105
4	OK	58-70	OK	99-105
5		114		99-105
Transom		166-168		99-105

Stem Offset		
up from baseline	back from HDP	Actual
267	267-279	
305	194-206	
337	153-165	
381	108-120	OK
457	54-66	
527	26-38	
311 to 387	intersection of chine extension	

Miscellaneous					
Measurement	Actual	Allowable Range	Measurement	Actual	Allowable Range
LOA		4711-4737	Chine radius at st. 1		Max 19
Horizontal transom offset		203-229	Chine radius st. 2 to transom	OK	Max 3
Hull Datum Point height	OK	683-708	Deck height		Max 127
Bow radius		Max 25			

Topside Measurements					
Measurement	Actual	Allowable Range	Measurement	Actual	Allowable Range
Aft end of dagg. slot from Hull datum point		2438-2464	Mast step to sheer (vertical)		390-400
Top of case parallel to baseline			Mast hole in the deck		Max 256x76
Aft edge of slot perpendicular to baseline			Length of foredeck		Min 1842
Keel to top of daggerboard case	OK	310-313	Length of aft deck	OK	Min 457
Length of daggerboard slot		Max 546	Sheer strikes		Max 32
Width of daggerboard slot		Max 13	Gunwale radius		Max 12
Splashboard		Min 51 x 610			

Measurer *NOBORUHIKO.KUDARA*

Stamp nr. **J1** SCIRA MEASUREP JAPAN