

SNIPE CLASS RACING ASSOCIATION

MEASUREMENT DATA SHEET

Revised March 2018

To be used for all boats. *For measurements in Italic refer to the Class Rules*

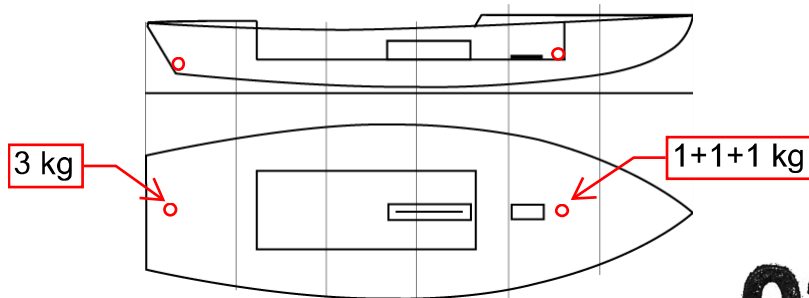
HULL NUMBER	31542	BUILDER	ZELTIC
MODEL	ZELTIC	YEAR OF MANUFACTURE	2018
OWNER	Marianne Beaudonin Hauzeur	COUNTRY	FRA

BARE HULL	<input type="checkbox"/>	COMPLETE	<input checked="" type="checkbox"/>	INCOMPLETE	<input type="checkbox"/>
HULL MATERIAL: WOOD	<input type="checkbox"/>	FIBERGLASS	<input checked="" type="checkbox"/>	make note of	
DECK MATERIAL: WOOD	<input type="checkbox"/>	FIBERGLASS	<input checked="" type="checkbox"/>	incomplete items	
FROM CERTIFIED MOULD	<input checked="" type="checkbox"/>				

HULL WEIGHT (min 125kg)	135.3	MAST LENGTH (Rules C.9.2, F.3.4)	6499
TOTAL WEIGHT (min 172.8kg)	172.8	Limiting marks & pin	OK
CORRECTOR WEIGHTS (max 15kg)	6.0	Corrector weights (max 100gr)	0
MOI $kg \cdot m^2$	271.3	BOOM LENGTH (max 2642mm)	2584
Spring set #	130	Limiting marks & pin	OK
JIB FITTING	280/OK	POLE LENGTH (max 2642mm)	2642
(279-300mm hor. From Hull Datum Point)		RUDDER DIMENSIONS	OK
max 45mm vert. above sheerline)		Weight (min. 2.72kg)	3.22
SHROUDS (1778-1981mm from HDP)	1778	Corrector weights (Rule C.8.5)	0
MAST HOLE (min 1494-mm from HDP)	1494	Parallel to transom (tolerance 2mm)	OK
UPPER GUDGEON (Rule D.2.3)	412	DAGGERBOARD DIMENSIONS	OK
LOWER GUDGEON (Rule D.2.3)	153	Band	OK
GUDGEONS DIAMETER (Rule D.2.3)	8.1	Safety line (max 610mm long)	600
		Restraining system (hooks or tablet)	OK

Insert the actual measurement in the cells marked as

Mark corrector weights position and amount below. Data to be copied on the Official Snipe Label



DATE MEASURED 3rd Dec 2018 MEASURER'S STAMP

03 SCIRA
MEASURER
SPAIN

MEASURER'S NAME Fernando Tajuelo

NOTES:

Complies mast hole distance with a 12 mm thick plate at the front of moulded mast hole.

Snipe Class International Racing Association