

SNIPE CLASS RACING ASSOCIATION

MEASUREMENT DATA SHEET

Revised March 2018

To be used for all boats. *For measurements in Italic refer to the Class Rules*

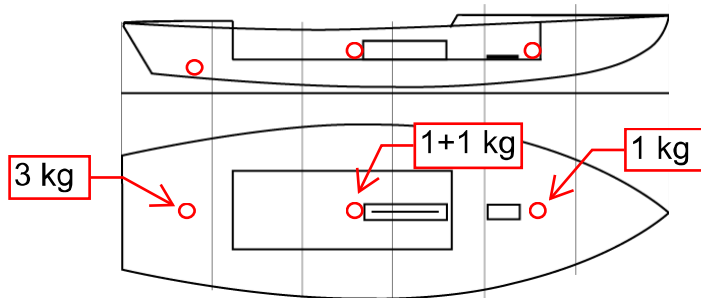
HULL NUMBER	31543	BUILDER	ZELTIC
MODEL	ZELTIC	YEAR OF MANUFACTURE	2018
OWNER	Andrea Fornaro	COUNTRY	ITA

BARE HULL	<input type="checkbox"/>	COMPLETE	<input type="checkbox"/>	INCOMPLETE	<input checked="" type="checkbox"/>
HULL MATERIAL: WOOD	<input type="checkbox"/>	FIBERGLASS	<input checked="" type="checkbox"/>	make note of	
DECK MATERIAL: WOOD	<input type="checkbox"/>	FIBERGLASS	<input checked="" type="checkbox"/>	incomplete items	
FROM CERTIFIED MOULD	<input checked="" type="checkbox"/>				

HULL WEIGHT (min 125kg)	135.4	MAST LENGTH (Rules C.9.2, F.3.4)	<input type="text"/>
TOTAL WEIGHT (min 172.8kg)	172.8	Limiting marks & pin	<input type="text"/>
CORRECTOR WEIGHTS (max 15kg)	6	Corrector weights (max 100gr)	<input type="text"/>
MOI kg·m²	271.3	BOOM LENGTH (max 2642mm)	<input type="text"/>
Spring set #	130	Limiting marks & pin	<input type="text"/>
JIB FITTING	280/OK	POLE LENGTH (max 2642mm)	<input type="text"/>
(279-300mm hor. From Hull Datum Point)		RUDDER DIMENSIONS	OK
max 45mm vert. above sheerline)		Weight (min. 2.72kg)	3.15
SHROUDS (1778-1981mm from HDP)	1778	Corrector weights (Rule C.8.5)	0
MAST HOLE (min 1494-mm from HDP)	1494	Parallel to transom (tolerance 2mm)	OK
UPPER GUDGEON (Rule D.2.3)	413	DAGGERBOARD DIMENSIONS	OK
LOWER GUDGEON (Rule D.2.3)	154	Band	OK
GUDGEONS DIAMETER (Rule D.2.3)	8.1	Safety line (max 610mm long)	610
		Restraining system (hooks or tablet)	OK

Insert the actual measurement in the cells marked as

Mark corrector weights position and amount below. Data to be copied on the Official Snipe Label



DATE MEASURED **3rd Dec 2018** MEASURER'S STAMP

MEASURER'S NAME **Fernando Tajuelo**

NOTES:

Complies mas hole distance with a 12 mm thick plate at the front of moulded mast hole.
Mast, boom and pole not included.

Fernando Tajuelo
[Signature]

03 SCIRA
MEASURER
SPAIN