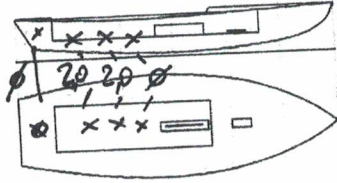




Snipe Class International Racing Association
Class Measurement Certificate

Hull Number 31554 Year of Manufacturer 2019
 Builder DB MARINESAS Model DBR1 LTD. ED.
 Weight 172,80
 Corrector weights 4,00
 Mast builder SW
 Corrector weights 0
 MOI value 727,6

Mark corrector weights here



Owner MATIAS SEQUEL
 Country CHILE
 Measurer/s STEFANO LONGHI SCIRA stamp # 04 SCIRA
 Date of measurement 11/02/2019

04 SCIRA
MEASURER
ITALY

This certificate is not valid until signed and stamped by the N.S. This certificate indicates that the boat has a registered MDS on file in the SCIRA office.

National Secretary signature _____
 I hereby agree to all SCIRA rules and bylaws. I agree to notify a SCIRA measurer if any equipment is modified, replaced and/or transferred to proceed to a new measurement. SCIRA reserves the right to measure this boat and any equipment at any time.

Owner signature _____
 Date _____

**THIS CERTIFICATE REMAINS WITH THE OWNER OF THIS SNIPE.
 IT CAN BE REPLACED BY REMEASUREMENT**

SNIFE CLASS RACING ASSOCIATION

MEASUREMENT DATA SHEET

Revised January 2017

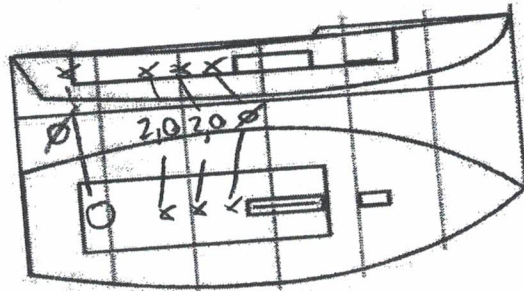
For boats built or modified after January 1, 2017

HULL NUMBER 31554 BUILDER DB MARINE S.A.S.
 MODEL DBR1 LVED. YEAR OF MANUFACTURE 2019
 OWNER MATTIAS SEQUEL COUNTRY CHLE

BARE HULL COMPLETE INCOMPLETE
 HULL MATERIAL: WOOD FIBERGLASS make note of
 DECK MATERIAL: WOOD FIBERGLASS incomplete items
 FROM CERTIFIED MOULD

HULL WEIGHT (min 125kg)	<u>131,00</u>	MAST LENGTH (max 6499mm)	<u>6499</u>
TOTAL WEIGHT (min 172.8kg)	<u>172,80</u>	Limiting marks & pin	<input checked="" type="checkbox"/>
CORRECTOR WEIGHTS (max 15kg)	<u>4,00</u>	Corrector weights (max 100gr)	<input checked="" type="checkbox"/>
MOI	<u>52,55</u>	BOOM LENGTH (max 2642mm)	<u>2630</u>
Spring #		Limiting marks & pin	<input checked="" type="checkbox"/>
JIB FITTING	<u>280</u>	POLE LENGTH (max 2642mm)	<u>2640</u>
(279-300mm hor. From Hull Datum Point)		RUDDER DIMENSIONS	<input checked="" type="checkbox"/>
max 45mm vert. above sheerline)		Weight (min. 2.72kg)	<u>2.9kg</u>
SHROUDS (1778-1981mm from HDP)	<u>1922</u>	Corrector weight (max 250g)	<input checked="" type="checkbox"/>
MAST HOLE (min 1494-mm from HDP)	<u>1494</u>	± 6 mm Parallel to transom (tolerance 2mm)	<input checked="" type="checkbox"/>
UPPER GUDGEON (410 +/-3mm)	<u>410</u>	DAGGERBOARD DIMENSIONS	<input checked="" type="checkbox"/>
LOWER GUDGEON (155 +/-3mm)	<u>155</u>	Band	<input checked="" type="checkbox"/>
GUDGEONS DIAMETER (8-8,5mm)	<u>8</u>	Safety line (max 600mm long)	<input checked="" type="checkbox"/>
		Restraining system	<input checked="" type="checkbox"/>

Insert the actual measurement in the cells marked as
 Mark ballast position and amount below



DATE MEASURED 11/02/2019 MEASURER'S STAMP

MEASURER'S NAME STEFANO LONGHI

NOTES:

04 SCIRA
 MEASURER
 ITALY

SCIRA Measuremen Check Sheet

To be used with the 80/20 true baseline measurement frame

Owner MATIAS SEGUEL Date 11/02/2019
 Hull 31554 Builder DBMARINE SAS. Material FIBERGLASS

NEW MOULD: FIRST OR OF 5 CERTIFICATION RENEW Y/N
 DO NOT COMPLETE IF FROM A CERTIFIED MOULD

Chine		Height			Width	
Station	Starboard	Port	Total	Allowable Range	Actual	Allowable Range
1	827	423	847	838-864	531	527-540
2	370	364	734	724-749	996	991-1003
3	346	340	686	673-699	1234	1232-1245
4	343	349	692	680-705	1274	1270-1283
5	384	388	772	762-787	1141	1137-1149
Transom	449	454	903	902-927	960	952-965

Sheer		Height			Width	
Station	Starboard	Port	Total	Allowable Range	Actual	Allowable Range
1	774	770	1544	1499-1549	910	895-921
2	723	714	1437	1391-1441	1352	1346-1372
3	687	676	1363	1333-1384	1525	1511-1537
4	666	667	1333	1321-1372	1478	1473-1499
5	672	673	1345	1321-1372	1282	1270-1295
Transom	689	694	1384	1384-1435	1045	1022-1048

690 694

MEASURER STEFANO LONGHI

Snipe Class International Racing Association



Keel				
Station	Height		Width	
	Actual	Allowable Range	Actual	Allowable Range
400mm	225	223-235		
1	162	162	76	Min 51
2	97	89-101	102	99-105
3	63	51-63	102	99-105
4	69	58-70	102	99-105
5	114	114	102	99-105
Transom	168	166-168	102	99-105

Stem Offset		
up from baseline	back from HDP	Actual
267	267-279	273
305	194-206	195
337	153-165	157
381	108-120	113
457	54-66	64
527	26-38	31
311 to 387	intersection of chine extension	

Miscellaneous					
Measurement	Actual	Allowable Range	Measurement	Actual	Allowable Range
LOA	4732	4711-4737	Chine radius at st. 1	✓	Max 19
Horizontal transom offset	205	203-229	Chine radius st. 2 to transom	✓	Max 3
Hull Datum Point height	684	683-708	Deck height	125	Max 127
Bow radius	✓	Max 25			

Topside Measurements					
Measurement	Actual	Allowable Range	Measurement	Actual	Allowable Range
Aft end of dagg. slot from Hull datum point	2460	2438-2464	Mast step to sheer (vertical)	396,5	390-400
Top of case parallel to baseline	✓		Mast hole in the deck	137x60	Max 256x76
Aft edge of slot perpendicular to baseline	✓		Length of foredeck	1860	Min 1842
Keel to top of daggerboard case	311	310-313	Length of aft deck	1205	Min 457
Length of daggerboard slot	533	Max 546	Sheer strikes	✓	Max 32
Width of daggerboard slot	12	Max 13	Gunwale radius	✓	Max 12
Splashboard	51x610	Min 51 x 610			

Measurer STEFANO LONGHI

Stamp nr.

04 SCIRA
MEASURER
ITALY

Snipe Class International Racing Association