

#31561

SNIFE CLASS RACING ASSOCIATION

MEASUREMENT DATA SHEET FOR CERTIFIED BOATS

Revised February 2019

This page to be used for all boats. For measurements in *Italic* refer to the Class Rules

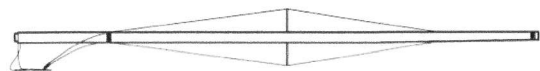
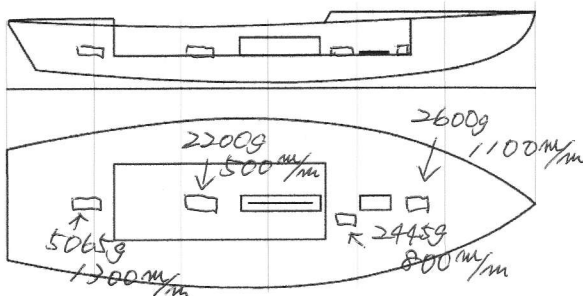
HULL NUMBER	31561	BUILDER	Persson Marine Japan
MODEL	NINJA	YEAR OF MANUFACTURE	2019
OWNER	NIHON UNIV	COUNTRY	Japan

BARE HULL	<input type="checkbox"/>	COMPLETE	<input checked="" type="checkbox"/>	INCOMPLETE	<input type="checkbox"/>
HULL MATERIAL: WOOD	<input type="checkbox"/>	FIBERGLASS	<input checked="" type="checkbox"/>	make note of	
DECK MATERIAL: WOOD	<input type="checkbox"/>	FIBERGLASS	<input checked="" type="checkbox"/>	incomplete items	
FROM CERTIFIED MOULD	<input type="checkbox"/>			filling the cells with NO	

HULL WEIGHT (min 125kg)	129.65	MAST LENGTH (Rules C.9.2, F.3.4)	6499
TOTAL WEIGHT (min 172.8kg)	172.8	Limiting marks & pin	<input checked="" type="checkbox"/>
CORRECTOR WEIGHTS (max 15kg)	73.74	Corrector weights (max 100gr)	0
MOI	12.31 ↗	BOOM LENGTH (max 2642mm)	2639
Spring set #	#91	Limiting marks & pin	<input checked="" type="checkbox"/>
JIB FITTING	<input checked="" type="checkbox"/>	POLE LENGTH (max 2642mm)	2637
(279-300mm hor. From Hull Datum Point)		RUDDER DIMENSIONS	<input checked="" type="checkbox"/>
max 45mm vert. above sheerline)		Weight (min. 2.72kg)	2.72
SHROUDS (1778-1981mm from HDP)	1788	Corrector weights (Rule C.8.5)	0
MAST HOLE (min 1494-mm from HDP)	1494	Parallel to transom (tolerance 2mm)	<input checked="" type="checkbox"/>
UPPER GUDGEON (Rule D.2.3)	411	DAGGERBOARD DIMENSIONS	<input checked="" type="checkbox"/>
LOWER GUDGEON (Rule D.2.3)	156	Band	<input checked="" type="checkbox"/>
GUDGEONS DIAMETER (Rule D.2.3)	8	Safety line (max 610mm long)	<input checked="" type="checkbox"/>
		Restraining system (hooks or tablet)	<input checked="" type="checkbox"/>

Insert the **actual** measurement in the cells marked as

Mark corrector weights position and amount below. Data to be copied on the Official Snife Label



Mast: sidewinder
Boom: FZ.

DATE MEASURED 13. Apr. 2019 MEASURER'S STAMP

MEASURER'S NAME NOBUHIKO KUDARA

NOTES:



Keel				
Station	Height		Width	
	Actual	Allowable Range	Actual	Allowable Range
400mm	223	223-235		
1	162	162	77	Min 51
2	101	89-101	103	99-105
3	62.5	51-63	105	99-105
4	70	58-70	105	99-105
5	114	114	100	99-105
Transom	166	166-178	102	99-105

Stem Offset		
up from baseline	back from HDP	Actual
267	267-279	267
305	194-206	202.5
337	153-165	159
381	108-120	112
457	54-66	58.5
527	26-38	28
311 to 387	intersection of chine extension ✓	

Miscellaneous					
Measurement	Actual	Allowable Range	Measurement	Actual	Allowable Range
LOA	4733	4711-4737	Chine radius at st. 1	19	Max 19
Horizontal transom offset	218	203-229	Chine radius st. 2 to transom	3	Max 3
Hull Datum Point height	702	683-708	Deck height	124	Max 127
Bow radius	25	Max 25			

Topside Measurements					
Measurement	Actual	Allowable Range	Measurement	Actual	Allowable Range
Aft end of dagg. slot from Hull datum point	2461	2438-2464	Mast step to sheer (vertical)	392	390-400
Top of case parallel to baseline	2	tolerance 2	Mast hole in the deck	153 x 63	Max 256x76
Aft edge of slot perpendicular to baseline	0	tolerance 2	Length of foredeck	1844	Min 1842
Forward edge of slot perpendicular to baseline	2	tolerance 6	Length of aft deck	1213	Min 457
Keel to top of daggerboard case	312	310-313	Sheer strikes	29	Max 32
Length of daggerboard slot	532	Max 546	Gunwale radius	✓	Max 12
Width of daggerboard slot	11	Max 13	Splashboard	51 x 950	Min 51 x 610

51 x 630

Measurer NOBUHIKO. KUDARA

Stamp nr. **J1** SCIRA MEASURED JAPAN