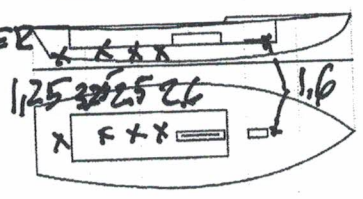




Snipe Class International Racing Association
Class Measurement Certificate

Hull Number 31592 Year of Manufacturer 2019
 Builder DB MARINE Model DB R 1
 Weight 172.8 Mark corrector weights here
 Corrector weights 11.2
 Mast builder SIDEWINDER
 Corrector weights 0
 MOI value 726.4



Owner DB MARINE
 Country ITALY
 Measurer/s GIORGIO BREZZI SCIRA stamp # 110
 Date of measurement 5.7.2019

This certificate is not valid until signed and stamped by the N.S. This certificate indicates that the boat has a registered MDS on file in the SCIRA office.

National Secretary signature _____
 I hereby agree to all SCIRA rules and bylaws. I agree to notify a SCIRA measurer if any equipment is modified, replaced and/or transferred to proceed to a new measurement. SCIRA reserves the right to measure this boat and any equipment at any time.

Owner signature _____
 Date _____

**THIS CERTIFICATE REMAINS WITH THE OWNER OF THIS SNIPE.
 IT CAN BE REPLACED BY REMEASUREMENT**

SNIFE CLASS RACING ASSOCIATION

MEASUREMENT DATA SHEET FOR CERTIFIED BOATS

Revised February 2019

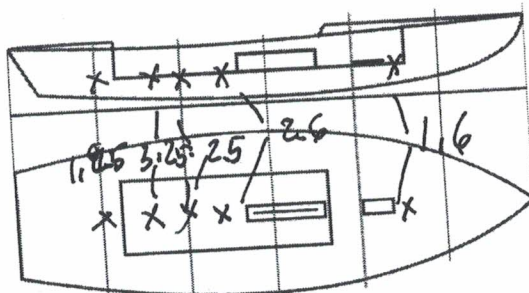
This page to be used for all boats. For measurements in *Italic* refer to the Class Rules

HULL NUMBER 31592 BUILDER DB MARINE SAS
 MODEL DB-R1 LTD ED. YEAR OF MANUFACTURE 2019
 OWNER DB MARINE COUNTRY ITALY

BARE HULL COMPLETE INCOMPLETE
 HULL MATERIAL: WOOD FIBERGLASS make note of
 DECK MATERIAL: WOOD FIBERGLASS incomplete items
 FROM CERTIFIED MOULD filling the cells with **NO**

HULL WEIGHT (min 125kg)	<input checked="" type="checkbox"/>	MAST LENGTH (Rules C.9.2, F.3.4)	<input checked="" type="checkbox"/>
TOTAL WEIGHT (min 172.8kg)	<u>172.8</u>	Limiting marks & pin	<input checked="" type="checkbox"/>
CORRECTOR WEIGHTS (max 15kg)	<u>41.2</u>	Corrector weights (max 100gr)	<input checked="" type="checkbox"/>
MOI	<u>52.12</u>	BOOM LENGTH (max 2642mm)	<input checked="" type="checkbox"/>
Spring set #	<u>126</u>	Limiting marks & pin	<input checked="" type="checkbox"/>
JIB FITTING	<u>281</u>	POLE LENGTH (max 2642mm)	<input checked="" type="checkbox"/>
(279-300mm hor. From Hull Datum Point)		RUDDER DIMENSIONS	
max 45mm vert. above sheerline)		Weight (min. 2.72kg)	<u>3.0</u>
SHROUDS (1778-1981mm from HDP)	<u>1785</u>	Corrector weights (Rule C.8.5)	<u>0</u>
MAST HOLE (min 1494-mm from HDP)	<u>1494</u>	Parallel to transom (tolerance 2mm)	<u>6</u>
UPPER GUDGEON (Rule D.2.3)	<u>155</u>	DAGGERBOARD DIMENSIONS	<input checked="" type="checkbox"/>
LOWER GUDGEON (Rule D.2.3)	<u>410</u>	Band	<input checked="" type="checkbox"/>
GUDGEONS DIAMETER (Rule D.2.3)	<u>82</u>	Safety line (max 610mm long)	<u>60</u>
		Restraining system (hooks or tablet)	<input checked="" type="checkbox"/>

Insert the **actual** measurement in the cells marked as
 Mark corrector weights position and amount below. Data to be copied on the Official Snipe Label



DATE MEASURED 05.07.2019 MEASURER'S STAMP
 MEASURER'S NAME GIORGIO BREZICH
 NOTES:

01 SCIRA
 MEASUREP
 ITALY

SCIRA Measurement Data Sheet

To be used with the 80/20 true baseline measurement frame


For boats built from January 1st, 2018. For older boats use the MDS in force in the year of manufacturing

Owner DB MARINE SAS Date 05/07/2019
 Hull 31592 Builder DB MARINE Material FG

NEW MOULD: FIRST OR OF 5 CERTIFICATION RENEW Y/N
 DO NOT COMPLETE IF FROM A CERTIFIED MOULD

Chine		Height			Width	
Station	Starboard	Port	Total	Allowable Range	Actual	Allowable Range
1				838-864		527-540
2				724-749		991-1003
3				673-699		1232-1245
4				680-705		1270-1283
5				762-787		1137-1149
Transom				902-927		952-965

Sheer		Height			Width	
Station	Starboard	Port	Total	Allowable Range	Actual	Allowable Range
1				1499-1549		895-921
2				1391-1441		1346-1372
3				1333-1384		1511-1537
4				1321-1372		1473-1499
5				1321-1372		1270-1295
Transom				1384-1435		1022-1048


SCIRA MEASURER
ITALY
 Snipe Class International Racing Association

31592

Keel				
Station	Height		Width	
	Actual	Allowable Range	Actual	Allowable Range
400mm		223-235		
1		162		Min 51
2		89-101		99-105
3		51-63		99-105
4		58-70		99-105
5		114		99-105
Transom		166-168		99-105

Stem Offset		
up from baseline	back from HDP	Actual
267	267-279	
305	194-206	
337	153-165	
381	108-120	
457	54-66	
527	26-38	
311 to 387	intersection of chine extension	

Miscellaneous					
Measurement	Actual	Allowable Range	Measurement	Actual	Allowable Range
LOA		4711-4737	Chine radius at st. 1		Max 19
Horizontal transom offset		203-229	Chine radius st. 2 to transom		Max 3
Hull Datum Point height		683-708	Deck height		Max 127
Bow radius		Max 25			

Topside Measurements					
Measurement	Actual	Allowable Range	Measurement	Actual	Allowable Range
Aft end of dagg. slot from Hull datum point		2438-2464	Mast step to sheer (vertical)	395	390-400
Top of case parallel to baseline		tolerance 2	Mast hole in the deck		Max 256x76
Aft edge of slot perpendicular to baseline		tolerance 2	Length of foredeck		Min 1842
Forward edge of slot perpendicular to baseline		tolerance 6	Length of aft deck		Min 457
Keel to top of daggerboard case	312	310-313	Sheer strikes		Max 32
Length of daggerboard slot		Max 546	Gunwale radius		Max 12
Width of daggerboard slot		Max 13	Splashboard		Min 51 x 610

Measurer
GIORGIO BREZICH

Stamp nr. MEASURER ITALY
[Signature]