

SNIFE CLASS RACING ASSOCIATION

MEASUREMENT DATA SHEET FOR CERTIFIED BOATS

Revised February 2019

This page to be used for all boats. *For measurements in Italic refer to the Class Rules*

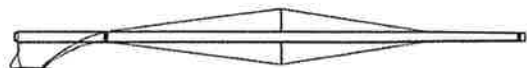
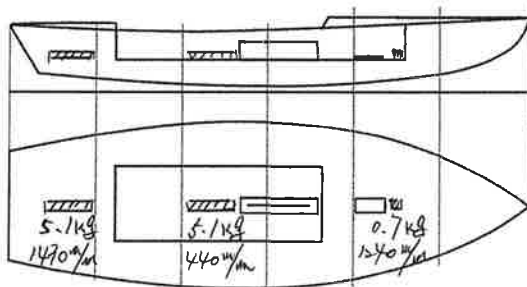
HULL NUMBER	31594	BUILDER	Persson Japan
MODEL	Ninja 2	YEAR OF MANUFACTURE	2019
OWNER	Tokyo Kaiyau University	COUNTRY	Japan

BARE HULL	<input type="checkbox"/>	COMPLETE	<input checked="" type="checkbox"/>	INCOMPLETE	<input type="checkbox"/>
HULL MATERIAL: WOOD	<input type="checkbox"/>	FIBERGLASS	<input checked="" type="checkbox"/>	make note of	
DECK MATERIAL: WOOD	<input type="checkbox"/>	FIBERGLASS	<input checked="" type="checkbox"/>	incomplete items	
FROM CERTIFIED MOULD	<input type="checkbox"/>			filling the cells with NO	

HULL WEIGHT (min 125kg)	125.15	MAST LENGTH (Rules C.9.2, F.3.4)	6499
TOTAL WEIGHT (min 172.8kg)	172.9	Limiting marks & pin	<input checked="" type="checkbox"/>
CORRECTOR WEIGHTS (max 15kg)	10.9	Corrector weights (max 100gr)	0
MOI	27.6	BOOM LENGTH (max 2642mm)	2600
Spring set #	#90	Limiting marks & pin	<input checked="" type="checkbox"/>
JIB FITTING	<input checked="" type="checkbox"/>	POLE LENGTH (max 2642mm)	2638
(279-330mm hor. From Hull Datum Point)		RUDDER DIMENSIONS	<input checked="" type="checkbox"/>
max 45mm vert. above sheerline)		Weight (min. 2.72kg)	2.86
SHROUDS (1778-1981mm from HDP)	1790	Corrector weights (Rule C.8.5)	0
MAST HOLE (min 1494-mm from HDP)	1495	Parallel to transom (tolerance 2mm)	<input checked="" type="checkbox"/>
UPPER GUDGEON (Rule D.2.3)	410	DAGGERBOARD DIMENSIONS	<input checked="" type="checkbox"/>
LOWER GUDGEON (Rule D.2.3)	155	Band	<input checked="" type="checkbox"/>
GUDGEONS DIAMETER (Rule D.2.3)	8	Safety line (max 610mm long)	<input checked="" type="checkbox"/>
		Restraining system (hooks or tablet)	<input checked="" type="checkbox"/>

Insert the **actual** measurement in the cells marked as

Mark corrector weights position and amount below. Data to be copied on the Official Snipe Label



Mast: Sidewinder

Boom: Factory-zero

DATE MEASURED 25/Aug./2019

MEASURER'S STAMP

MEASURER'S NAME Motoharu Nishii

02 SCIRA
MEASURER
JAPAN

NOTES:

SCIRA Measurement Data Sheet

To be used with the 80/20 true baseline measurement frame

For boats built from January 1st, 2018. For older boats use the MDS in force in the year of manufacturing

Owner Tokyo Kaiyou University Date 25/Aug/2019
 Hull 31594 Builder Persson Japan Material FRP

NEW MOULD: FIRST OR 2 OF 5 CERTIFICATION RENEW N Y/N

DO NOT COMPLETE IF FROM A CERTIFIED MOULD

Chine						
Station	Height			Width		
	Starboard	Port	Total	Allowable Range	Actual	Allowable Range
1	425	426	851	838-864	533	527-540
2	366	371	737	724-749	997	991-1003
3	337	340	677	673-699	1240	1232-1245
4	342	346	688	680-705	1277	1270-1283
5	388	390	778	762-787	1147	1137-1149
Transom	455	455	910	902-927	957	952-965

Sheer						
Station	Height			Width		
	Starboard	Port	Total	Allowable Range	Actual	Allowable Range
1	766	770	1536	1499-1549	904	895-921
2	709	715	1424	1391-1441	1352	1346-1372
3	670	671	1341	1333-1384	1517	1511-1537
4	662	664	1326	1321-1372	1479	1473-1499
5	666	671	1337	1321-1372	1283	1270-1295
Transom	690	694	1384	1384-1435	1027	1022-1048

Snipe Class International Racing Association

Motoharu Nishii

02SCIRA
MEASURER
JAPAN

Keel				
Station	Height		Width	
	Actual	Allowable Range	Actual	Allowable Range
400mm	227	223-235		
1	✓	162	59	Min 51
2	97	89-101	100	99-105
3	60.5	51-63	101	99-105
4	67	58-70	101	99-105
5	✓	114	101	99-105
Transom	169	166-178	101	99-105

Stem Offset		
up from baseline	back from HDP	Actual
267	267-279	275
305	194-206	201
337	153-165	159
381	108-120	112
457	54-66	60
527	26-38	30
311 to 387	intersection of chine extension	

Miscellaneous					
Measurement	Actual	Allowable Range	Measurement	Actual	Allowable Range
LOA	4732	4711-4737	Chine radius at st. 1	✓	Max 19
Horizontal transom offset	215	203-229	Chine radius st. 2 to transom	✓	Max 3
Hull Datum Point height	697	683-708	Deck height	110	Max 127
Bow radius	✓	Max 25	Cockpit width	830	Max 1016

Topside Measurements					
Measurement	Actual	Allowable Range	Measurement	Actual	Allowable Range
Aft end of dagg. slot from Hull datum point	2462	2438-2464	Heel point to sheer (vertical)	292	390-400
Top of case parallel to baseline	0	tolerance 2	Mast hole in the deck	154x58	Max 256x76
Aft edge of slot perpendicular to baseline	0	tolerance 2	Length of foredeck	1844	Min 1842
Forward edge of slot perpendicular to baseline	5	tolerance 6	Length of aft deck	1230	Min 457
Keel to top of daggerboard case	312	310-313	Sheer strikes	31	Max 32
Length of daggerboard slot	539	Max 546	Gunwale radius		Max 12
Width of daggerboard slot	12	Max 13	Splashboard	52x610	Min 51 x 610

Measurer

Motoharu Nishii

Stamp nr.

02 SCIRA
MEASURER
JAPAN

Snipe Class International Racing Association