

# SNIFE CLASS RACING ASSOCIATION

## MEASUREMENT DATA SHEET FOR CERTIFIED BOATS

Revised February 2019

This page to be used for all boats. *For measurements in Italic refer to the Class Rules*

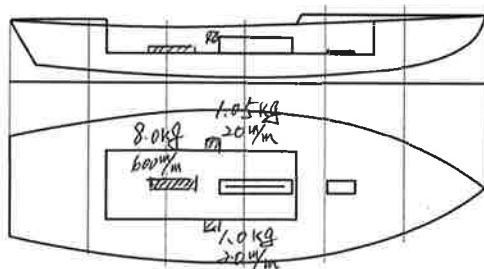
HULL NUMBER	3/595	BUILDER	Persson Marin Japan
MODEL	Ninja 2	YEAR OF MANUFACTURE	2019
OWNER	Persson Marin Japan	COUNTRY	Japan

BARE HULL	<input type="checkbox"/>	COMPLETE	<input checked="" type="checkbox"/>	INCOMPLETE	<input type="checkbox"/>
HULL MATERIAL: WOOD	<input type="checkbox"/>	FIBERGLASS	<input checked="" type="checkbox"/>	make note of	
DECK MATERIAL: WOOD	<input type="checkbox"/>	FIBERGLASS	<input checked="" type="checkbox"/>	incomplete items	
FROM CERTIFIED MOULD	<input type="checkbox"/>			filling the cells with <b>NO</b>	

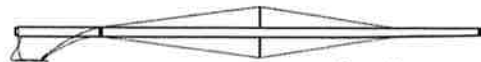
HULL WEIGHT (min 125kg)	125.05	MAST LENGTH (Rules C.9.2, F.3.4)	6499
TOTAL WEIGHT (min 172.8kg)	172.8	Limiting marks & pin	<input checked="" type="checkbox"/>
CORRECTOR WEIGHTS (max 15kg)	10.05	Corrector weights (max 100gr)	0
MOI	27.6	BOOM LENGTH (max 2642mm)	2636
Spring set #	#90	Limiting marks & pin	<input checked="" type="checkbox"/>
JIB FITTING	<input checked="" type="checkbox"/>	POLE LENGTH (max 2642mm)	2637
(279-330mm hor. From Hull Datum Point)		RUDDER DIMENSIONS	<input checked="" type="checkbox"/>
max 45mm vert. above sheerline)		Weight (min. 2.72kg)	2.84
SHROUDS (1778-1981mm from HDP)	1782	Corrector weights (Rule C.8.5)	0
MAST HOLE (min 1494-mm from HDP)	1496	Parallel to transom (tolerance 2mm)	<input checked="" type="checkbox"/>
UPPER GUDGEON (Rule D.2.3)	411	DAGGERBOARD DIMENSIONS	<input checked="" type="checkbox"/>
LOWER GUDGEON (Rule D.2.3)	156	Band	<input checked="" type="checkbox"/>
GUDGEONS DIAMETER (Rule D.2.3)	8	Safety line (max 610mm long)	<input checked="" type="checkbox"/>
		Restraining system (hooks or tablet)	<input checked="" type="checkbox"/>

Insert the **actual** measurement in the cells marked as

Mark corrector weights position and amount below. Data to be copied on the Official Snipe Label



Mast Weight: 9.2 kg



Mast: Sidewinder

Boom: Factory-zero

DATE MEASURED 02/Sep/2019 MEASURER'S STAMP

MEASURER'S NAME Motoharu Nishii

NOTES:

**02 SCIRA**  
MEASURER  
JAPAN

## SCIRA Measurement Data Sheet

To be used with the 80/20 true baseline measurement frame

For boats built from January 1st, 2018. For older boats use the MDS in force in the year of manufacturing

Owner Persson Marin Japan Date 02/Sep/2019Hull 31595 Builder Persson Marin Japan Material FRPNEW MOULD: FIRST  OR  4 OF 5 CERTIFICATION RENEW  N Y/N

DO NOT COMPLETE IF FROM A CERTIFIED MOULD

Chine						
Station	Height			Allowable Range	Width	
	Starboard	Port	Total		Actual	Allowable Range
1	425	425	850	838-864	525	527-540
2	367	367	734	724-749	996	991-1003
3	337	340	677	673-699	1241	1232-1245
4	342	347	689	680-705	1276	1270-1283
5	388	392	780	762-787	1147	1137-1149
Transom	454	456	910	902-927	956	952-965

Sheer						
Station	Height			Allowable Range	Width	
	Starboard	Port	Total		Actual	Allowable Range
1	768	770	1538	1499-1549	904	895-921
2	711	714	1425	1391-1441	1355	1346-1372
3	669	675	1344	1333-1384	1519	1511-1537
4	659	665	1324	1321-1372	1476	1473-1499
5	665	671	1336	1321-1372	1284	1270-1295
Transom	691	697	1388	1384-1435	1026	1022-1048

Motoharu Nishii

Snipe Class International Racing Association

**02** SCIRA  
MEASURER  
JAPAN

Keel				
Station	Height		Width	
	Actual	Allowable Range	Actual	Allowable Range
400mm	226	223-235		
1	✓	162	57	Min 51
2	97	89-101	101	99-105
3	61	51-63	102	99-105
4	67	58-70	101	99-105
5	✓	114	101	99-105
Transom	169	166-178	100	99-105

Stem Offset		
up from baseline	back from HDP	Actual
267	267-279	272
305	194-206	199
337	153-165	157
381	108-120	111
457	54-66	59
527	26-38	29
311 to 387	intersection of chine extension	

**Miscellaneous**

Measurement	Actual	Allowable Range	Measurement	Actual	Allowable Range
LOA	4736	4711-4737	Chine radius at st. 1	✓	Max 19
Horizontal transom offset	217	203-229	Chine radius st. 2 to transom	✓	Max 3
Hull Datum Point height	697	683-708	Deck height	110	Max 127
Bow radius	✓	Max 25	Cockpit width	230	Max 1016

**Topside Measurements**

Measurement	Actual	Allowable Range	Measurement	Actual	Allowable Range
Aft end of dagger slot from Hull datum point	2459	2438-2464	Heel point to sheer (vertical)	391	390-400
Top of case parallel to baseline	/	tolerance 2	Mast hole in the deck	54x60	Max 256x76
Aft edge of slot perpendicular to baseline	/	tolerance 2	Length of foredeck	1845	Min 1842
Forward edge of slot perpendicular to baseline	/	tolerance 6	Length of aft deck	1230	Min 457
Keel to top of daggerboard case	311	310-313	Sheer strikes	30	Max 32
Length of daggerboard slot	537	Max 546	Gunwale radius		Max 12
Width of daggerboard slot	12	Max 13	Splashboard	54x610	Min 51 x 610

Measurer

Motoharu Nishii

Stamp nr. **02** SCIRA MEASURER JAPAN

Snipe Class International Racing Association