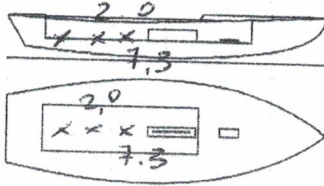




Snipe Class International Racing Association  
**Class Measurement Certificate**

Hull Number 31614 Year of Manufacturer 2019  
 Builder DB MARINE Model DB-R1  
 Weight 172,8  
 Corrector weights 9,3  
 Mast builder SIDEWINDER  
 Corrector weights 0  
 MOI value 727 6

Mark corrector weights here



Owner DB MARINE  
 Country ITALY  
 Measurer/s GIORCIO BREGA SCIRA stamp # \_\_\_\_\_  
 Date of measurement 12.11.2019

This certificate is not valid until signed and stamped by the N.S. This certificate indicates that the boat has a registered MDS on file in the SCIRA office.

National Secretary signature \_\_\_\_\_

*I hereby agree to all SCIRA rules and bylaws. I agree to notify a SCIRA measurer if any equipment is modified, replaced and/or transferred to proceed to a new measurement. SCIRA reserves the right to measure this boat and any equipment at any time.*

Owner signature \_\_\_\_\_

Date \_\_\_\_\_

**THIS CERTIFICATE REMAINS WITH THE OWNER OF THIS SNIPE.  
 IT CAN BE REPLACED BY REMEASUREMENT**

# SNIPE CLASS RACING ASSOCIATION

## MEASUREMENT DATA SHEET FOR CERTIFIED BOATS

Revised February 2019

This page to be used for all boats. *For measurements in Italic refer to the Class Rules*

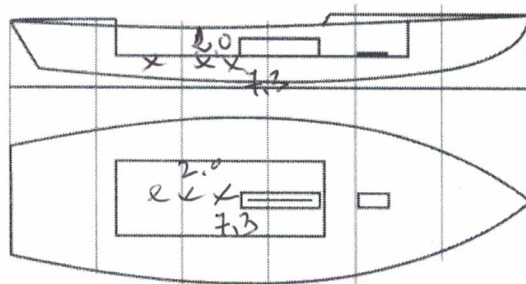
HULL NUMBER	31614	BUILDER	DB MARINE SAS
MODEL	DB-R1	YEAR OF MANUFACTURE	2019
OWNER	DB MARINE SAS	COUNTRY	ITALY

BARE HULL	<input type="checkbox"/>	COMPLETE	<input checked="" type="checkbox"/>	INCOMPLETE	<input type="checkbox"/>
HULL MATERIAL: WOOD	<input type="checkbox"/>	FIBERGLASS	<input checked="" type="checkbox"/>	make note of	
DECK MATERIAL: WOOD	<input type="checkbox"/>	FIBERGLASS	<input checked="" type="checkbox"/>	incomplete items	
FROM CERTIFIED MOULD	<input type="checkbox"/>	filling the cells with <b>NO</b>			

HULL WEIGHT (min 125kg)	<input checked="" type="checkbox"/>	MAST LENGTH (Rules C.9.2, F.3.4)	<input checked="" type="checkbox"/>
TOTAL WEIGHT (min 172.8kg)	<input checked="" type="checkbox"/>	Limiting marks & pin	<input checked="" type="checkbox"/>
CORRECTOR WEIGHTS (max 15kg)	9.3	Corrector weights (max 100gr)	<input checked="" type="checkbox"/>
MOI		BOOM LENGTH (max 2642mm)	<input checked="" type="checkbox"/>
Spring set #		Limiting marks & pin	<input checked="" type="checkbox"/>
JIB FITTING	282	POLE LENGTH (max 2642mm)	2642
(279-300mm hor. From Hull Datum Point)		RUDDER DIMENSIONS	<input checked="" type="checkbox"/>
max 45mm vert. above sheerline)		Weight (min. 2.72kg)	2.9
SHROUDS (1778-1981mm from HDP)	1783	Corrector weights (Rule C.8.5)	<input checked="" type="checkbox"/>
MAST HOLE (min 1494-mm from HDP)	+8 <sup>mm</sup>	Parallel to transom (tolerance 2mm)	<input checked="" type="checkbox"/>
UPPER GUDGEON (Rule D.2.3)	410	DAGGERBOARD DIMENSIONS	<input checked="" type="checkbox"/>
LOWER GUDGEON (Rule D.2.3)	155	Band	<input checked="" type="checkbox"/>
GUDGEONS DIAMETER (Rule D.2.3)	8 <sup>mm</sup>	Safety line (max 610mm long)	610 <sup>mm</sup>
		Restraining system (hooks or tablet)	<input checked="" type="checkbox"/>

Insert the **actual** measurement in the cells marked as

Mark corrector weights position and amount below. Data to be copied on the Official Snipe Label



DATE MEASURED 12/11/2019 MEASURER'S STAMP

MEASURER'S NAME GIORGIO BREZZI

NOTES:




31614

Keel				
Station	Height		Width	
	Actual	Allowable Range	Actual	Allowable Range
400mm	✓	223-235	✓	
1	✓	162	✓	Min 51
2	✓	89-101	✓	99-105
3	✓	51-63	✓	99-105
4	✓	58-70	✓	99-105
5	✓	114	✓	99-105
Transom	✓	166-168	✓	99-105

Stem Offset		
up from baseline	back from HDP	Actual
267	267-279	✓
305	194-206	✓
337	153-165	✓
381	108-120	✓
457	54-66	✓
527	26-38	✓
311 to 387	intersection of chine extension	

Miscellaneous					
Measurement	Actual	Allowable Range	Measurement	Actual	Allowable Range
LOA	✓	4711-4737	Chine radius at st. 1	✓	Max 19
Horizontal transom offset	✓	203-229	Chine radius st. 2 to transom	✓	Max 3
Hull Datum Point height	✓	683-708	Deck height	✓	Max 127
Bow radius	✓	Max 25			

Topside Measurements					
Measurement	Actual	Allowable Range	Measurement	Actual	Allowable Range
Aft end of dagg. slot from Hull datum point	✓	2438-2464	Mast step to sheer (vertical)	391	390-400
Top of case parallel to baseline	✓	tolerance 2	Mast hole in the deck	✓	Max 256x76
Aft edge of slot perpendicular to baseline	✓	tolerance 2	Length of foredeck	✓	Min 1842
Forward edge of slot perpendicular to baseline	✓	tolerance 6	Length of aft deck	✓	Min 457
Keel to top of daggerboard case	✓	310-313	Sheer strikes	✓	Max 32
Length of daggerboard slot	✓	Max 546	Gunwale radius	✓	Max 12
Width of daggerboard slot	✓	Max 13	Splashboard	✓	Min 51 x 610

Measurer  
 GIORGIO BREZICA  


Stamp nr.  
 01 SCIRA MEASUREP

## SCIRA Measurement Data Sheet

To be used with the 80/20 true baseline measurement frame

For boats built from January 1st, 2018. For older boats use the MDS in force in the year of manufacturing

Owner DB MARINE SAS Date 12/11/2019

Hull 31614 Builder DB MARINE Material FIBERGLASS

NEW MOULD: FIRST  OR  OF 5 CERTIFICATION RENEW  Y/N

DO NOT COMPLETE IF FROM A CERTIFIED MOULD

<b>Chine</b>						
	Height				Width	
Station	Starboard	Port	Total	Allowable Range	Actual	Allowable Range
1	✓	✓	✓	838-864	✓	527-540
2	✓	✓	✓	724-749	✓	991-1003
3	✓	✓	✓	673-699	✓	1232-1245
4	✓	✓	✓	680-705	✓	1270-1283
5	✓	✓	✓	762-787	✓	1137-1149
Transom	✓	✓	✓	902-927	✓	952-965

<b>Sheer</b>						
	Height				Width	
Station	Starboard	Port	Total	Allowable Range	Actual	Allowable Range
1	✓	✓	✓	1499-1549	✓	895-921
2	✓	✓	✓	1391-1441	✓	1346-1372
3	✓	✓	✓	1333-1384	✓	1511-1537
4	✓	✓	✓	1321-1372	✓	1473-1499
5	✓	✓	✓	1321-1372	✓	1270-1295
Transom	✓	✓	✓	1384-1435	✓	1022-1048

GIORGIO BREZICH  
