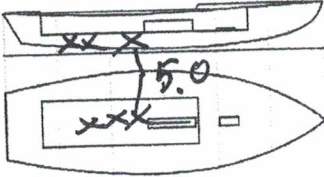




Snipe Class International Racing Association
Class Measurement Certificate

Hull Number 31624 Year of Manufacturer 2020
 Builder DB MARINE Model DBR 1 L.B.
 Weight 172.5 Mark corrector weights here
 Corrector weights 50
 Mast builder SPECK INDEK
 Corrector weights 0
 MOI value 52.72



Owner D. B. MARINE
 Country ITALY

Measurer/s GIORGIO BREZICH SCIRA stamp # MEASURER ITALY

Date of measurement 10.2.2020
 This certificate is not valid until signed and stamped by the N.S. This certificate indicates that the boat has a registered MDS on file in the SCIRA office.

National Secretary signature _____

I hereby agree to all SCIRA rules and bylaws. I agree to notify a SCIRA measurer if any equipment is modified, replaced and/or transferred to proceed to a new measurement. SCIRA reserves the right to measure this boat and any equipment at any time.

Owner signature _____

Date _____

**THIS CERTIFICATE REMAINS WITH THE OWNER OF THIS SNIPE.
 IT CAN BE REPLACED BY REMEASUREMENT**

SNIPE CLASS RACING ASSOCIATION

MEASUREMENT DATA SHEET

Revised January 2017

For boats built or modified after January 1, 2017

HULL NUMBER	31624	BUILDER	DB MARINE
MODEL	DB-R1	YEAR OF MANUFACTURE	2020
OWNER	DB MARINE L.E.	COUNTRY	ITALY

BARE HULL COMPLETE INCOMPLETE

HULL MATERIAL: WOOD FIBERGLASS make note of

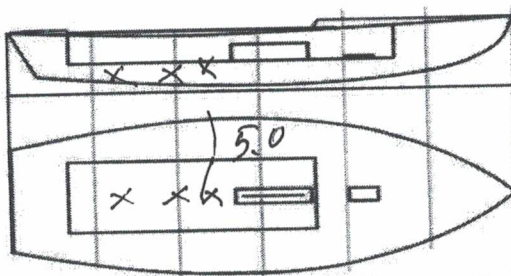
DECK MATERIAL: WOOD FIBERGLASS incomplete items

FROM CERTIFIED MOULD

HULL WEIGHT (min 125kg)	<input checked="" type="checkbox"/>	MAST LENGTH (max 6499mm)	<input checked="" type="checkbox"/>
TOTAL WEIGHT (min 172.8kg)	<input checked="" type="checkbox"/>	Limiting marks & pin	<input checked="" type="checkbox"/>
CORRECTOR WEIGHTS (max 15kg)	5.0	Corrector weights (max 100gr)	<input checked="" type="checkbox"/>
MOI	52.72	BOOM LENGTH (max 2642mm)	<input checked="" type="checkbox"/>
Spring #	126	Limiting marks & pin	<input checked="" type="checkbox"/>
JIB FITTING	279	POLE LENGTH (max 2642mm)	2638 <input checked="" type="checkbox"/>
(279-300mm hor. From Hull Datum Point)		RUDDER DIMENSIONS	<input checked="" type="checkbox"/>
max 45mm vert. above sheerline)		Weight (min. 2.72kg)	2.90 <input checked="" type="checkbox"/>
SHROUDS (1778-1981mm from HDP)	1781	Corrector weight (max 250g)	<input checked="" type="checkbox"/>
MAST HOLE (min 1494-mm from HDP)	5 1/4	Parallel to transom (tolerance 2mm)	<input checked="" type="checkbox"/>
UPPER GUDGEON (410 +/-3mm)	410	DAGGERBOARD DIMENSIONS	<input checked="" type="checkbox"/>
LOWER GUDGEON (155 +/-3mm)	155	Band	<input checked="" type="checkbox"/>
GUDGEONS DIAMETER (8-8,5mm)	8 1/4	Safety line (max 600mm long)	60 <input checked="" type="checkbox"/>
		Restraining system	<input checked="" type="checkbox"/>

Insert the actual measurement in the cells marked as

Mark ballast position and amount below



DATE MEASURED 10/02/2020 MEASURER'S STAMP

MEASURER'S NAME GIORGIO BREZICH

NOTES:

Snipe Class International Racing Association

SCIRA Measuremen Check Sheet

To be used with the 80/20 true baseline measurement frame

Owner DB MARINE SAS

Date 10/02/2020

Hull 31624 Builder DB MARINE

Material FG

NEW MOULD: FIRST OR OF 5

CERTIFICATION RENEW

Y/N

DO NOT COMPLETE IF FROM A CERTIFIED MOULD

Chine						
Station	Height			Allowable Range	Width	
	Starboard	Port	Total		Actual	Allowable Range
1	✓	✓	✓	838-864	✓	527-540
2	✓	✓	✓	724-749	✓	991-1003
3	✓	✓	✓	673-699	✓	1232-1245
4	✓	✓	✓	680-705	✓	1270-1283
5	✓	✓	✓	762-787	✓	1137-1149
Transom	✓	✓	✓	902-927	✓	952-965

Sheer						
Station	Height			Allowable Range	Width	
	Starboard	Port	Total		Actual	Allowable Range
1	✓	✓	✓	1499-1549	✓	895-921
2	✓	✓	✓	1391-1441	✓	1346-1372
3	✓	✓	✓	1333-1384	✓	1511-1537
4	✓	✓	✓	1321-1372	✓	1473-1499
5	✓	✓	✓	1321-1372	✓	1270-1295
Transom	✓	✓	✓	1384-1435	✓	1022-1048



Snipe Class International Racing Association

[Handwritten Signature]

Keel				
Station	Height		Width	
	Actual	Allowable Range	Actual	Allowable Range
400mm	✓	223-235	✓	
1	✓	162	✓	Min 51
2	✓	89-101	✓	99-105
3	✓	51-63	✓	99-105
4	✓	58-70	✓	99-105
5	✓	114	✓	99-105
Transom	✓	166-168	✓	99-105

Stem Offset		
up from baseline	back from HDP	Actual
267	267-279	✓
305	194-206	✓
337	153-165	✓
381	108-120	✓
457	54-66	✓
527	26-38	✓
311 to 387	intersection of chine extension	

Miscellaneous

Measurement	Actual	Allowable Range	Measurement	Actual	Allowable Range
LOA	✓	4711-4737	Chine radius at st. 1	<	Max 19
Horizontal transom offset	✓	203-229	Chine radius st. 2 to transom	✓	Max 3
Hull Datum Point height	✓	683-708	Deck height	✓	Max 127
Bow radius	✓	Max 25			

Topside Measurements

Measurement	Actual	Allowable Range	Measurement	Actual	Allowable Range
Aft end of dagg. slot from Hull datum point	✓	2438-2464	Mast step to sheer (vertical)	420	390-400
Top of case parallel to baseline	✓		Mast hole in the deck	✓	Max 256x76
Aft edge of slot perpendicular to baseline	✓		Length of foredeck	✓	Min 1842
Keel to top of daggerboard case	312	310-313	Length of aft deck	✓	Min 457
Length of daggerboard slot	✓	Max 546	Sheer strikes	✓	Max 32
Width of daggerboard slot	✓	Max 13	Gunwale radius	✓	Max 12
Splashboard	✓	Min 51 x 610			

Measurer
GIORGIO BREZICH



Stamp nr. ITALY

Snipe Class International Racing Association