



# SNIFE CLASS RACING ASSOCIATION

## MEASUREMENT DATA SHEET FOR CERTIFIED BOATS

Revised February 2019

This page to be used for all boats. *For measurements in Italic refer to the Class Rules*

HULL NUMBER	31632	BUILDER	DBMARINE SAS
MODEL	DB-R1	YEAR OF MANUFACTURE	2020
OWNER	ALESSANDRO TURCHETTO	COUNTRY	ITALY

BARE HULL	<input type="checkbox"/>	COMPLETE	<input checked="" type="checkbox"/>	INCOMPLETE	<input type="checkbox"/>
HULL MATERIAL: WOOD	<input type="checkbox"/>	FIBERGLASS	<input checked="" type="checkbox"/>	make note of	
DECK MATERIAL: WOOD	<input type="checkbox"/>	FIBERGLASS	<input checked="" type="checkbox"/>	incomplete items	
FROM CERTIFIED MOULD	<input checked="" type="checkbox"/>			filling the cells with <b>NO</b>	

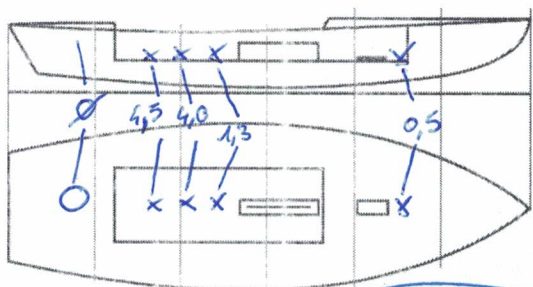
HULL WEIGHT (min 125kg)	<input checked="" type="checkbox"/>	MAST LENGTH (Rules C.9.2, F.3.4)	<input checked="" type="checkbox"/>
TOTAL WEIGHT (min 172.8kg)	<input checked="" type="checkbox"/>	Limiting marks & pin	<input checked="" type="checkbox"/>
CORRECTOR WEIGHTS (max 15kg)	10,3	Corrector weights (max 100gr)	<input checked="" type="checkbox"/>
MOI	52,14	BOOM LENGTH (max 2642mm)	<input checked="" type="checkbox"/>
Spring set #	126	Limiting marks & pin	<input checked="" type="checkbox"/>
JIB FITTING	281	POLE LENGTH (max 2642mm)	<input checked="" type="checkbox"/>
(279-300mm hor. From Hull Datum Point)		RUDDER DIMENSIONS	<input checked="" type="checkbox"/>
max 45mm vert. above sheerline)		Weight (min. 2.72kg)	3,05
SHROUDS (1778-1981mm from HDP)	1783	Corrector weights (Rule C.8.5)	<input checked="" type="checkbox"/>
MAST HOLE (min 1494-mm from HDP)	+10	Parallel to transom (tolerance 2mm)	<input checked="" type="checkbox"/>
UPPER GUDGEON (Rule D.2.3)	410	DAGGERBOARD DIMENSIONS	<input checked="" type="checkbox"/>
LOWER GUDGEON (Rule D.2.3)	155	Band	<input checked="" type="checkbox"/>
GUDGEONS DIAMETER (Rule D.2.3)	8	Safety line (max 610mm long)	<input checked="" type="checkbox"/>
		Restraining system (hooks or tablet)	<input checked="" type="checkbox"/>

52,10 }  
52,14 } ←  
52,09 }

52,10  
52,14  
52,09

Insert the **actual** measurement in the cells marked as

Mark corrector weights position and amount below. Data to be copied on the Official Snipe Label



DATE MEASURED 12/06/2020

MEASURER'S NAME STEFANO LONGHI

SCIRA MEASURER ITALY

MEASURER'S NAME STEFANO LONGHI

NOTES:

## SCIRA Measurement Data Sheet

To be used with the 80/20 true baseline measurement frame

For boats built from January 1st, 2018. For older boats use the MDS in force in the year of manufacturing

Owner ALESSANDRO TURCHETTO Date 12.06.2020Hull 31632 Builder DBMARINE SAS Material FIBERGLASSNEW MOULD: FIRST  OR  OF 5 CERTIFICATION RENEW  Y/N

DO NOT COMPLETE IF FROM A CERTIFIED MOULD

Chine						
	Height				Width	
Station	Starboard	Port	Total	Allowable Range	Actual	Allowable Range
1	420	420	840	838-864	535	527-540
2	362	361	723	724-749	1000	991-1003
3	361	333	674	673-699	1237	1232-1245
4	337	348	685	680-705	1275	1270-1283
5	381	388	769	762-787	1139	1137-1149
Transom	452	454	906	902-927	961	952-965

Sheer						
	Height				Width	
Station	Starboard	Port	Total	Allowable Range	Actual	Allowable Range
1	775	767	1545	1499-1549	920	895-921
2	719	708	1427	1391-1441	1366	1346-1372
3	677	669	1346	1333-1384	1535	1511-1537
4	662	664	1326	1321-1372	1495	1473-1499
5	670	667	1337	1321-1372	1291	1270-1295
Transom	694	696	1390	1384-1435	1042	1022-1048

Keel				
Station	Height		Width	
	Actual	Allowable Range	Actual	Allowable Range
400mm	225	223-235		
1	✓	162	83	Min 51
2	96	89-101	102	99-105
3	60	51-63	102	99-105
4	68	58-70	102	99-105
5	✓	114	102	99-105
Transom	170	166-168	102	99-105

Stem Offset		
up from baseline	back from HDP	Actual
267	267-279	277
305	194-206	205
337	153-165	160
381	108-120	115
457	54-66	63
527	26-38	33
311 to 387	intersection of chine extension	

Miscellaneous					
Measurement	Actual	Allowable Range	Measurement	Actual	Allowable Range
LOA	4731	4711-4737	Chine radius at st. 1	✓	Max 19
Horizontal transom offset	209	203-229	Chine radius st. 2 to transom	✓	Max 3
Hull Datum Point height	702	683-708	Deck height	100	Max 127
Bow radius	✓	Max 25			

Topside Measurements					
Measurement	Actual	Allowable Range	Measurement	Actual	Allowable Range
Aft end of dagger slot from Hull datum point	2454	2438-2464	Mast step to sheer (vertical)	395	390-400
Top of case parallel to baseline	✓	tolerance 2	Mast hole in the deck	✓	Max 256x76
Aft edge of slot perpendicular to baseline	✓	tolerance 2	Length of foredeck	1865	Min 1842
Forward edge of slot perpendicular to baseline	✓	tolerance 6	Length of aft deck	1208	Min 457
Keel to top of daggerboard case	310	310-313	Sheer strikes	✓	Max 32
Length of daggerboard slot	535	Max 546	Gunwale radius	✓	Max 12
Width of daggerboard slot	12	Max 13	Splashboard	✓	Min 51 x 610

Measurer  
STEFANO LONGHI

Stamp nr.  
**04 SCIRA**  
MEASURER  
ITALY  
Snipe Class International Racing Association