

## SCIRA Measurement Data Sheet

To be used with the 80/20 true baseline measurement frame

**For boats built from January 1st, 2018.** For older boats use the MDS in force in the year of manufacturing

**Owner**                    **Ignacio Iturrioz Eguidazu**                    **Date** **28th Dec 2020**

**Hull** **31680**    **Builder**                    **Zeltic**                    **Material**                    **GRP**

NEW MOULD: FIRST  OR  OF 5    CERTIFICATION RENEW  Y/N

DO NOT COMPLETE IF FROM A CERTIFIED MOULD

<b>Chine</b>						
	Height				Width	
Station	Starboard	Port	Total	Allowable Range	Actual	Allowable Range
1	438	426	864	838-864	530	527-540
2	384	363	747	724-749	992	991-1003
3	357	329	686	673-699	1236	1232-1245
4	360	330	690	680-705	1273	1270-1283
5	400	372	772	762-787	1145	1137-1149
Transom	465	443	908	902-927	957	952-965

<b>Sheer</b>						
	Height				Width	
Station	Starboard	Port	Total	Allowable Range	Actual	Allowable Range
1	783	760	1543	1499-1549	912	895-921
2	729	698	1427	1391-1441	1365	1346-1372
3	694	653	1347	1333-1384	1530	1511-1537
4	684	651	1335	1321-1372	1497	1473-1499
5	693	661	1354	1321-1372	1292	1270-1295
Transom	712	685	1397	1384-1435	1027	1022-1048

<b>Keel</b>				
Station	Height		Width	
	Actual	Allowable Range	Actual	Allowable Range
400mm	225	223-235		
1		162	93	Min 51
2	100	89-101	103	99-105
3	62	51-63	102	99-105
4	69	58-70	103	99-105
5		114	102	99-105
Transom	166	166-178	104	99-105

<b>Stem Offset</b>		
up from baseline	back from HDP	Actual
267	267-279	271
305	194-206	198
337	153-165	156
381	108-120	112
457	54-66	60
527	26-38	31
311 to 387	intersection of chine extension	

OK (360)

<b>Miscellaneous</b>					
Measurement	Actual	Allowable Range	Measurement	Actual	Allowable Range
LOA	4729	4711-4737	Chine radius at st. 1	OK	Max 19
Horizontal transom offset	200	203-229	Chine radius st. 2 to transom	OK	Max 3
Hull Datum Point height	705	683-708	Deck height	126	Max 127
Bow radius	OK	Max 25	Cockpit width	755	Max 1016

<b>Topside Measurements</b>					
Measurement	Actual	Allowable Range	Measurement	Actual	Allowable Range
Aft end of dagg. slot from Hull datum point	2458	2438-2464	Heel point to sheer (vertical)	395	390-400
Top of case parallel to baseline	OK	tolerance 2	Mast hole in the deck	154x64	Max 256x76
Aft edge of slot perpendicular to baseline	OK	tolerance 2	Length of foredeck	1845	Min 1842
Forward edge of slot perpendicular to baseline	OK	tolerance 6	Length of aft deck	1250	Min 457
Keel to top of daggerboard case	310	310-313	Sheer strikes	32	Max 32
Length of daggerboard slot	545	Max 546	Gunwale radius	OK	Max 12
Width of daggerboard slot	12	Max 13	Splashboard	OK	Min 51 x 610

Measurer  
Fernando Tajuelo

**03 SCIRA**  
**MEASURER**  
**SPAIN**  
Stamp nr.

# SNIPE CLASS RACING ASSOCIATION

## MEASUREMENT DATA SHEET FOR CERTIFIED BOATS

Revised February 2019

This page to be used for all boats. For measurements in *Italic* refer to the Class Rules

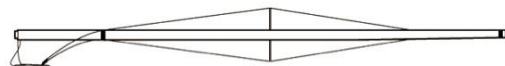
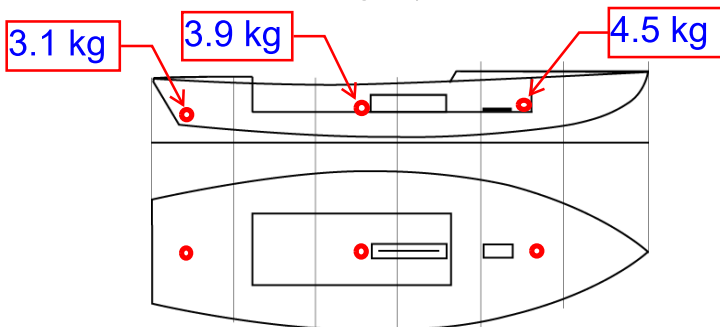
HULL NUMBER	31680	BUILDER	Zeltic	
MODEL	Zeltic	YEAR OF MANUFACTURE	2020	
OWNER	Ignacio Iturrioz Eguidazu		COUNTRY	ESP

BARE HULL	<input type="checkbox"/>	COMPLETE	<input checked="" type="checkbox"/>	INCOMPLETE	<input type="checkbox"/>
HULL MATERIAL: WOOD	<input type="checkbox"/>	FIBERGLASS	<input checked="" type="checkbox"/>	make note of	
DECK MATERIAL: WOOD	<input type="checkbox"/>	FIBERGLASS	<input checked="" type="checkbox"/>	incomplete items	
				filling the cells with <b>NO</b>	
FROM CERTIFIED MOULD	<input checked="" type="checkbox"/>				

HULL WEIGHT (min 125kg)	132.8	MAST LENGTH (Rules C.9.2, F.3.4)	6499
TOTAL WEIGHT (min 172.8kg)	172.8	Limiting marks & pin	OK
CORRECTOR WEIGHTS (max 15kg)	11.3	Corrector weights (max 100gr)	0
MOI	271.3	BOOM LENGTH (max 2642mm)	2583
Spring set #	130	Limiting marks & pin	OK
JIB FITTING	OK/281	POLE LENGTH (max 2642mm)	2642
(279-330mm hor. From Hull Datum Point)		RUDDER DIMENSIONS	OK
max 45mm vert. above sheerline)		Weight (min. 2.72kg)	2.74
SHROUDS (1778-1981mm from HDP)	1778	Corrector weights (Rule C.8.5)	0
MAST HOLE (min 1494-mm from HDP)	1494	Parallel to transom (tolerance 2mm)	OK
UPPER GUDGEON (Rule D.2.3)	410	DAGGERBOARD DIMENSIONS	OK
LOWER GUDGEON (Rule D.2.3)	155	Band	OK
GUDGEONS DIAMETER (Rule D.2.3)	8.1	Safety line (max 610mm long)	610
		Restraining system (hooks or tablet)	OK

Insert the **actual** measurement in the cells marked as

Mark corrector weights position and amount below. Data to be copied on the Official Snipe Label



03 SCIRA  
MEASURER  
SPAIN

DATE MEASURED 28th Dec 2020 MEASURER'S STAMP

MEASURER'S NAME Fernando Tajuelo

NOTES:  
Complies mast hole distance with a 10 mm thick plate at the front of moulded mast hole.