

Snipe Class International Racing Association  
**Class Measurement Certificate**



Hull Number 31093  
Year of Manufacturer 2021

Builder DB MARINE SAS Model DB-R1

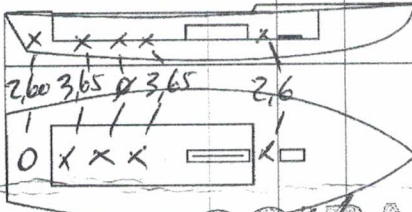
Weight 172,80 Mark corrector weights here

Corrector weights 12,40kg

Mast builder SIDEWINDER

Corrector weights 0

MOI value 52,07



Owner DB MARINE SAS

Country ITALY

Measurer/s STEFANO LONGHI SCIRA stamp # SCIRA MEASURER ITALY

This certificate is not valid until signed and stamped by the NS.  
This certificate indicates that the boat has a registered MDS on file  
in the SCIRA office.

Date of measurement 20.02.2021

National Secretary signature \_\_\_\_\_

*I hereby agree to all SCIRA Rules and Bylaws. I agree to notify a SCIRA measurer if any equipment is modified, replaced and/or transferred to proceed to a new measurement. SCIRA reserves the right to measure this boat and any equipment at any time.*

Owner signature \_\_\_\_\_

Date \_\_\_\_\_

**THIS CERTIFICATE REMAINS WITH THE OWNER OF THIS SNIPE.  
IT CAN BE REPLACED BY REMEASUREMENT**

# SNIFE CLASS RACING ASSOCIATION

## MEASUREMENT DATA SHEET FOR CERTIFIED BOATS

Revised February 2019

This page to be used for all boats. For measurements in *Italic* refer to the Class Rules

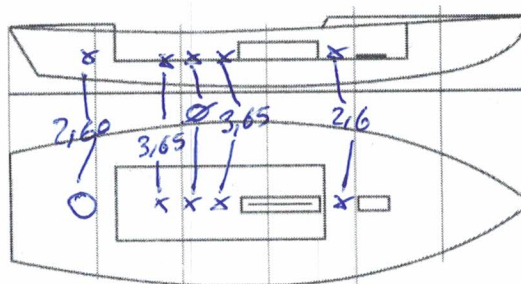
HULL NUMBER	<u>31693</u>	BUILDER	<u>DBMARINE SAS</u>
MODEL	<u>DB-R1</u>	YEAR OF MANUFACTURE	<u>2021</u>
OWNER	<u>DB MARINE SAS</u>	COUNTRY	<u>ITALY</u>

BARE HULL	<input type="checkbox"/>	COMPLETE	<input checked="" type="checkbox"/>	INCOMPLETE	<input type="checkbox"/>
HULL MATERIAL: WOOD	<input type="checkbox"/>	FIBERGLASS	<input checked="" type="checkbox"/>	make note of	
DECK MATERIAL: WOOD	<input type="checkbox"/>	FIBERGLASS	<input checked="" type="checkbox"/>	incomplete items	
				filling the cells with <b>NO</b>	
FROM CERTIFIED MOULD	<input checked="" type="checkbox"/>				

HULL WEIGHT (min 125kg)	<u>127,00</u>	MAST LENGTH (Rules C.9.2, F.3.4)	<u>6499</u>
TOTAL WEIGHT (min 172.8kg)	<u>172,80</u>	Limiting marks & pin	<input checked="" type="checkbox"/>
CORRECTOR WEIGHTS (max 15kg)	<u>12,40</u>	Corrector weights (max 100gr)	<input type="checkbox"/> NO
MOI	<u>52,07</u>	BOOM LENGTH (max 2642mm)	<u>2642</u>
Spring set #	<u>126</u>	Limiting marks & pin	<input checked="" type="checkbox"/>
JIB FITTING	<u>282</u>	POLE LENGTH (max 2642mm)	<u>2641</u>
(279-300mm hor. From Hull Datum Point)		RUDDER DIMENSIONS	<input type="checkbox"/> OK
max 45mm vert. above sheerline)		Weight (min. 2.72kg)	<u>3,10</u>
SHROUDS (1778-1981mm from HDP)	<u>1780</u>	Corrector weights (Rule C.8.5)	<input type="checkbox"/> NO
MAST HOLE (min 1494-mm from HDP)	<u>1494</u>	Parallel to transom (tolerance 2mm)	<input checked="" type="checkbox"/>
UPPER GUDGEON (Rule D.2.3)	<u>410</u>	DAGGERBOARD DIMENSIONS	<input checked="" type="checkbox"/>
LOWER GUDGEON (Rule D.2.3)	<u>155</u>	Band	<input checked="" type="checkbox"/>
GUDGEONS DIAMETER (Rule D.2.3)	<u>8</u>	Safety line (max 610mm long)	<input checked="" type="checkbox"/>
		Restraining system (hooks or tablet)	<input checked="" type="checkbox"/>

Insert the **actual** measurement in the cells marked as

Mark corrector weights position and amount below. Data to be copied on the Official Snipe Label



DATE MEASURED 25/02/2021 MEASURER'S STAMP

MEASURER'S NAME STEFANO LONGHI

NOTES:



### SCIRA Measurement Data Sheet

To be used with the 80/20 true baseline measurement frame

For boats built from January 1st, 2018. For older boats use the MDS in force in the year of manufacturing

Owner DB MARINE SAS Date 25/02/2021

Hull 31693 Builder DB MARINE SAS Material FIBERGLASS

NEW MOULD: FIRST  OR  OF 5 CERTIFICATION RENEW  Y/N

DO NOT COMPLETE IF FROM A CERTIFIED MOULD

Chine						
Station	Height			Width		
	Starboard	Port	Total	Allowable Range	Actual	Allowable Range
1				838-864		527-540
2				724-749		991-1003
3				673-699		1232-1245
4				680-705		1270-1283
5				762-787		1137-1149
Transom				902-927		952-965

Sheer						
Station	Height			Width		
	Starboard	Port	Total	Allowable Range	Actual	Allowable Range
1				1499-1549		895-921
2				1391-1441		1346-1372
3				1333-1384		1511-1537
4				1321-1372		1473-1499
5				1321-1372		1270-1295
Transom				1384-1435		1022-1048

MEASURER: STEFANO LONGHI



31693 HULL NR

Keel				
Station	Height		Width	
	Actual	Allowable Range	Actual	Allowable Range
400mm		223-235		
1		162		Min 51
2		89-101		99-105
3		51-63		99-105
4		58-70		99-105
5		114		99-105
Transom		166-168		99-105

Stem Offset		
up from baseline	back from HDP	Actual
267	267-279	
305	194-206	
337	153-165	
381	108-120	
457	54-66	
527	26-38	
311 to 387	intersection of chine extension	

Miscellaneous					
Measurement	Actual	Allowable Range	Measurement	Actual	Allowable Range
LOA		4711-4737	Chine radius at st. 1		Max 19
Horizontal transom offset		203-229	Chine radius st. 2 to transom		Max 3
Hull Datum Point height		683-708	Deck height		Max 127
Bow radius		Max 25			

Topside Measurements					
Measurement	Actual	Allowable Range	Measurement	Actual	Allowable Range
Aft end of dagg. slot from Hull datum point		2438-2464	Mast step to sheer (vertical)	393	390-400
Top of case parallel to baseline		tolerance 2	Mast hole in the deck	168x60	Max 256x76
Aft edge of slot perpendicular to baseline		tolerance 2	Length of foredeck	✓	Min 1842
Forward edge of slot perpendicular to baseline		tolerance 6	Length of aft deck	✓	Min 457
Keel to top of daggerboard case	313	310-313	Sheer strikes	✓	Max 32
Length of daggerboard slot	525	Max 546	Gunwale radius	✓	Max 12
Width of daggerboard slot	12	Max 13	Splashboard	✓	Min 51 x 610

Measurer

STEFANO LONGHI

Stamp  
SCIRA MEASURER

Snipe Class International Sailing Association