

SNIFE CLASS RACING ASSOCIATION

MEASUREMENT DATA SHEET FOR CERTIFIED BOATS

Revised February 2019

This page to be used for all boats. For measurements in Italic refer to the Class Rules

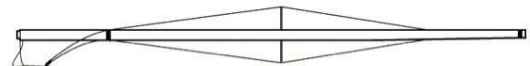
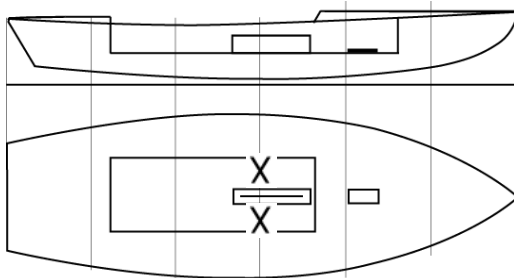
HULL NUMBER	31721	BUILDER	SRG-VOLCAN
MODEL	A	YEAR OF MANUFACTURE	06/07/2021
OWNER	SRG-VOLCAN	COUNTRY	SPAIN

BARE HULL	<input checked="" type="checkbox"/>	COMPLETE	<input type="checkbox"/>	NCOMPLETE	<input type="checkbox"/>
HULL MATERIAL: WOOD	<input type="checkbox"/>	FIBERGLASS	<input checked="" type="checkbox"/>	Omake note of incomplete items filling the cells with NO	
DECK MATERIAL: WOOD	<input type="checkbox"/>	FIBERGLASS	<input checked="" type="checkbox"/>		
FROM CERTIFIED MOULD	<input type="checkbox"/>				

HULL WEIGHT (min 125kg)	130	MAST LENGTH (Rules C.9.2, F.3.4)	OK
TOTAL WEIGHT (min 172.8kg)	173	Limiting marks & pin	OK
CORRECTOR WEIGHTS (max 15kg)	4	Corrector weights (max 100gr)	0
MOI	280.28	BOOM LENGTH (max 2642mm)	OK
Spring set #	124	Limiting marks & pin	OK
JIB FITTING	181/OK	POLE LENGTH (max 2642mm)	OK
(279-330mm hor. From Hull Datum Point)		RUDDER DIMENSIONS	OK
max 45mm vert. above sheerline)		Weight (min. 2.72kg)	OK
SHROUDS (1778-1981mm from HDP)	1791	Corrector weights (Rule C.8.5)	0
MAST HOLE (min 1494-mm from HDP)	1492	Parallel to transom (tolerance 2mm)	OK
UPPER GUDGEON (Rule D.2.3)	OK	DAGGERBOARD DIMENSIONS	OK
LOWER GUDGEON (Rule D.2.3)	OK	Band	OK
GUDGEONS DIAMETER (Rule D.2.3)	OK	Safety line (max 610mm long)	OK
		Restraining system (hooks or tablet)	OK

Insert the actual measurement in the cells marked as

Mark corrector weights position and amount below. Data to be copied on the Official Snipe Label



DATE MEASURED 06/07/2021

MEASURER'S STAMP

MEASURER'S NAME JOSE PEREZ MORALES



SCIRA MEASUREMENT DATA SHEET

Las medidas en altura están referidas al plano base REAL de la L 80/20

Owner: SRG-VOLCAN		Date: 06/07/2021
Hull: 31721	Builder: SRG-VOLCAN	Material: Resina poliéster y fibra vidrio

Medido por: José Pérez Morales

Hull weight / Peso casco (min 125kg)	130
Total weight / Peso total (min 172.8kg)	173
Corrector weight / Lastre (max 15 kg)	4
MOI / Momento de inercia (max 271 kgm ²)	280.28
Spring set / Muelles N°	124

Chine / Pantoque						
Station / Estación	Height / altura				Width / ancho	
	Starboard / estribor	Port / babor	Valor medio	Allowable range / rango	Actual / medido	Allowable range / rango
1	282,5	278,5	288,5	280-292	535	527-539
2	221	234	227,5	223/235	999	991-1003
3	204	214	209	197-209	1233	1232-1244
4	209	215	212	200-212	1271	1270-1282
5	244	257	250,5	242-254	1140	1137-1149
Transom / Espejo popa					957	953-965

Sheer / Cinton						
Station / Estación	Height / altura				Width / ancho	
	Starboard / estribor	Port / babor	Valor medio	Allowable range / rango	Actual / medido	Allowable range / rango
1	627,5	635	630	610-635	919	895-921
2	563	579	571	556-581	1361	1346-1372
3	534	547	540,5	528-553	1572	1511-1537
4	530	536	533	521-546	1488	1473-1499
5	540	545	542,5	521-546	1292	1270-1296
Transom / Espejo popa			568	553-578		1022-1048

Keel / Quilla				
Station / Estación	Height / altura		Width / ancho	
	Actual / medido	Allowable range / rango	Actual / medido	Allowable range / rango
400	223	223-235		NA
1		162	61	min 51
2	89	89-101	104	99-105
3	62	51-63	103	99-105
4	70	58-70	103	99-105
5		114	103	99-105
Transom / Espejo popa		166-178	102	99-105

Owner: SRG-VOLCAN 31721

Stem Offset / Perfil proa		
up from baseline (altura)	back from HDP / horiz. Desde proa	Actual /medido
267	267-279	271
305	194-206	195
337	153-165	156
381	108-120	110
457	54-66	56
527	26-38	27

Miscellaneous / Varios					
Measurement /Medida	Actual /medido	Allowable range / rango	Measurement /Medida	Actual /medido	Allowable range / rango
LOA / Eslora total	4730	4711-4737	Chine radius at st.1 / radio en E.1	OK	19
Horizontal transom offset / retranqueo espejo popa en quilla	206	203-229	Chine radius at st.2 / radio en E.2	OK	3

Hull Datum Point height / Altura cintón proa	705	683-708	Deck height /Altura cubierta	112	Max 127
Bow radius/ Radio proa		Max 25	Cockpit width / ancho bañera		Max 1016

Topside Measurement / Cubierta					
Measurement /Medida	Actual /medido	Allowable range / rango	Measurement /Medida	Actual /medido	Allowable range / rango
Aft end of dagg. Slot from hull datum point /Borde post. orza a	2462	2438-2464	Heel point to sheer (vertical) Altura pie mastil a cintón	391	390-400
Top case parallel to baseline / paralelismo caja orza a baseline	OK	tolerance 2	Mast hole in deck / Agujero mastil cubierta	155X60	Max 256 x76
Aft edge of slot perpend. to baseline / Perp. Popa cajera a	OK	tolerance 2	Length of foredeck / Longitud cubierta proa	1843	Min 1842
Forward edge of slot perpend. to baseline / Idem proa	OK	tolerance 6	Length of aftdeck / longitud cubierta popa	1185	Min 457
Keel to top of daggerboard case / altura cajera	311	310-313	Sheer strikes	32	Max 32
Length of daggerboard slot /Longitud cajera	544	Max 546	Gunwalwe radius	OK	Max 12
Width of daggerboard slot / ancho cajera	13	Max 13	Splashboard / tamar	54X885	Min51x610

Cartagena 6 de Julio 2021

El Medidor: José Pérez Morales

