

# SNIPE CLASS RACING ASSOCIATION

## MEASUREMENT DATA SHEET FOR CERTIFIED BOATS

Revised February 2019

This page to be used for all boats. For measurements in *Italic* refer to the Class Rules

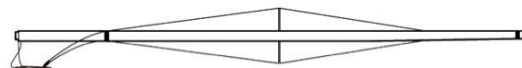
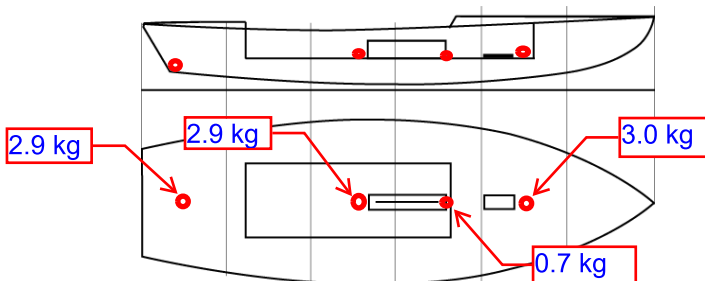
HULL NUMBER	31731	BUILDER	ZELTIC
MODEL	ZELTIC	YEAR OF MANUFACTURE	2021
OWNER	SALVADOR BUENO	COUNTRY	ESP

BARE HULL	<input type="checkbox"/>	COMPLETE	<input checked="" type="checkbox"/>	INCOMPLETE	<input type="checkbox"/>
HULL MATERIAL: WOOD	<input type="checkbox"/>	FIBERGLASS	<input checked="" type="checkbox"/>	make note of	
DECK MATERIAL: WOOD	<input type="checkbox"/>	FIBERGLASS	<input checked="" type="checkbox"/>	incomplete items	
FROM CERTIFIED MOULD	<input checked="" type="checkbox"/>	filling the cells with <b>NO</b>			

HULL WEIGHT (min 125kg)	131.2	MAST LENGTH (Rules C.9.2, F.3.4)	6499
TOTAL WEIGHT (min 172.8kg)	172.8	Limiting marks & pin	OK
CORRECTOR WEIGHTS (max 15kg)	9.5	Corrector weights (max 100gr)	0
MOI $kg \cdot m^2$	271	BOOM LENGTH (max 2642mm)	2588
Spring set #	130	Limiting marks & pin	OK
JIB FITTING	Ok / 280	POLE LENGTH (max 2642mm)	2642
(279-330mm hor. From Hull Datum Point)		RUDDER DIMENSIONS	OK
max 45mm vert. above sheerline)		Weight (min. 2.72kg)	2.95
SHROUDS (1778-1981mm from HDP)	1778	Corrector weights (Rule C.8.5)	0
MAST HOLE (min 1494-mm from HDP)	1494	Parallel to transom (tolerance 2mm)	OK
UPPER GUDGEON (Rule D.2.3)	411	DAGGERBOARD DIMENSIONS	OK
LOWER GUDGEON (Rule D.2.3)	157	Band	OK
GUDGEONS DIAMETER (Rule D.2.3)	8.1	Safety line (max 610mm long)	610
		Restraining system (hooks or tablet)	OK

Insert the **actual** measurement in the cells marked as

Mark corrector weights position and amount below. Data to be copied on the Official Snipe Label



DATE MEASURED **27th Aug 2021** MEASURER'S STAMP

**03 SCIRA MEASURER SPAIN**

MEASURER'S NAME **Fernando Tajuelo**

NOTES:  
Complies mast hole distance with a 10 mm thick plate at the front of moulded mast hole.