

# SNIFE CLASS RACING ASSOCIATION

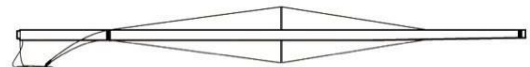
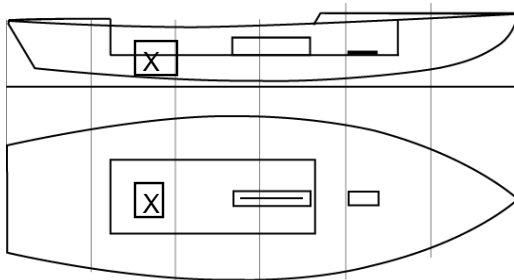
## MEASUREMENT DATA SHEET FOR CERTIFIED BOATS

HULL NUMBER	31738	BUILDER	SINERGIA	
MODEL		YEAR OF MANUFACTURE	01/12/2021	
OWNER	SINERGIA	COUNTRY	ESP	

BARE HULL  COMPLETE  OK INCOMPLETE   
 HULL MATERIAL: WOOD   
 DECK MATERIAL: WOOD  FIBERGLASS  OK make note of  
 FROM CERTIFIED MOULD  FIBERGLASS  OK xxincomplete items  
 filling the cells with **NO**

HULL WEIGHT (min 125kg)	127	MAST LENGTH (Rules C.9.2, F.3.4)	--
TOTAL WEIGHT (min 172.8kg)	172.8	Limiting marks & pin	--
CORRECTOR WEIGHTS (max 15kg)	1,3	Corrector weigths (max 100gr)	--
MOI	286.65	BOOM LENGTH (max 2642mm)	--
Spring set #	124	Limiting marks & pin	--
JIB FITTING	280	POLE LENGTH (max 2642mm)	--
(279-330mm hor. From Hull Datum Point) max 45mm vert. above sheerline)	OK	RUDDER DIMENSIONS	OK
SHROUDS (1778-1981mm from HDP)	1780	Weigth (min. 2.72kg)	2.9
MAST HOLE (min 1494-mm from HDP)	1494	Corrector weigths (Rule C.8.5)	--
UPPER GUDGEON (Rule D.2.3)	410	Parallel to transom (tolerance 2mm)	OK
LOWER GUDGEON (Rule D.2.3)	155	DAGGERBOARD DIMENSIONS	--
GUDGEONS DIAMETER (Rule D.2.3)	8,1	Band	--
		Safety line (max 610mm long)	OK
		Restraining system (hooks or tablet)	OK

Mark corrector weights position and amount below. Data to be copied on the Official Snipe Label



DATE MEASURED \_\_\_\_\_  
 MEASURER'S NAME 01/12/2021

MEASURER'S STAMP

## SCIRA MEASUREMENT DATA SHEET

Las medidas de rango están referidas al PLANO BASE REAL de la L 80/20

<b>Owner:</b> SINERGIA	<b>Date:</b> 01/12/2021
<b>Hull:</b> 31738	<b>Builder:</b> SINERGIA
<b>Material:</b> GRP	

**Medido por:** JOSE PEREZ MORALES

Hull weight / Peso casco (min 125kg)	127
Total weight / Peso total (min 172.8kg)	172.8
Corrector weight / Lastre (max 15 kg)	1.3
MOI / Momento de inercia (max 271 kgm2)	286,6
Spring set / Muelles Nº	124

Chine / Pantoque						
Station / Estación	Height / altura				Width / ancho	
	Starboard /Estribor	Port / Babor	Valor medio	Allowable range / Rango	Actual /medido	Allowable range /Rango
1	288	276	282	280-292	539	527-539
2	236	221	229.5	223/235	994	991-1003
3	216	201	208.5	197-209	1232	1232-1244
4	219	205	212	200-212	1270	1270-1282
5	255	241	248	242-254	1140	1137-1149
Transom / Espejo popa	317	313	315	312-324	958	953-965

Sheer / Cinton						
Station / Estación	Height / altura				Width / ancho	
	Starboard /Estribor	Port / Babor	Valor Medio	Allowable range / Rango	Actual /medido	Allowable range /Rango
1	639	628	633.5	610-635	915	895-921
2	580	562	571	556-581	1358	1346-1372
3	549	531	540	528-553	1522	1511-1537
4	541	522	531.5	521-546	1486	1473-1499
5	548	533	540.5	521-546	1285	1270-1296
Transom / Espejo popa	566	557	561.5	553-578	1042	1022-1048

Keel / Quilla				
Station /Estación	Height /altura		Width / ancho	
	Actual /medido	Allowable range/Rango	Actual /medido	Allowable range/ Rango
400	223	223-235	--	NA
1	--	162	61	min 51
2	101	89-101	104	99-105
3	62	51-63	105	99-105
4	70	58-70	104	99-105
5	--	114	104	99-105
Transom /Espejo popa	166	166-178	104	99-105



<b>31738</b>	<b>Date: 01/12/2021</b>
--------------	-------------------------

<b>Stem Offset / Perfil proa</b>		
up from baseline (altura)	back from HDP / horiz. Desde proa	Actual /medido
267	267-279	266
305	194-206	194
337	153-165	153
381	108-120	107
457	54-66	54
527	26-38	26

<b>Miscellaneous / Varios</b>					
Measurement /Medida	Actual /medido	Allowable range / Rango	Measurement /Medida	Actual /medido	Allowable range / rango
LOA / Elora total	4725	4711-4737	Chine radius at st.1 / radio en E.1	19	19
Horizontal transo offset /retranqueo espejo popa en quilla	209	203-229	Chine radius at st.2 / radio en E.2	1	3

Hull Datum Point height/Altura Punto Origen	708	683-708	Deck height /Altura cubierta	115	Max 127
Bow radius/ Radio proa	25	Max 25	850Cockpit width / ancho bañera	850	Max 1016

<b>Topside Measurement / Cubierta</b>					
Measurement /Medida	Actual /medido	Allowable range / Rango	Measurement /Medida	Actual /medido	Allowable range / Rango
Aft end of dagg. Slot from hull datum point /Borde post. orza a	2463	2438-2464	Heel point to sheer (vertical) Altura pie mastil a cinton		390-400
Top case parallel to baseline / paralelismo caja orza a plano base	2	tolerance 2	Mast hole in deck / Agujero mastil cubierta	155x60	Max 256 x76
Aft edge of slot perpend. to baseline / Perp. Popa cajera a	1	tolerance 2	Length of foredeck / Longitud cubierta proa	1846	Min 1842
Forward edge of slot perpend. to baseline / Idem proa	2	tolerance 6	Length of aftdeck / longitud cubierta popa	1198	Min 457
Keel to top of daggerboardcase / altura cajera	313	310-313	Sheer strikes	32	Max 32
Length of daggerboard slot /Longitud cajera	544	Max 546	Gunwalwe radius	12	Max 12
Width of daggerboard slot / ancho cajera	13	Max 13	Splashboard / tajamar	54x800	Min51x610

Cartagena, 1 de Diciembre 2021 El Medidor

