



# Class Measurement Certificate

Hull Number 31744 Year of

Manufacturer \_\_\_\_\_

Builder DB MARINE Model DB-R1

Weight 172,80 kgs Mark corrector weights here

Corrector weights 9,40 kgs

Mast builder SIDEWINDER

Corrector weights Ø

MOI value 271,87

Owner DB MARINE

Country ITALY

Measurer/s STEFANO LONGHI SCIRA stamp # 04 SCIRA

This certificate is not valid until signed and stamped by the NS. This certificate indicates that the boat has a registered MDS on file in the SCIRA office.

Date of measurement 29/11/2021

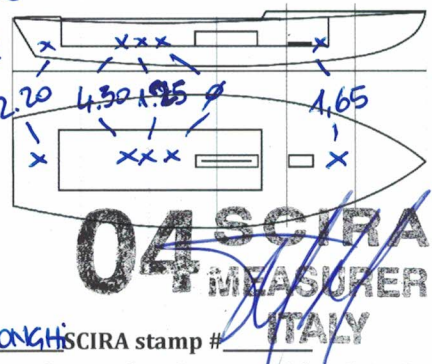
National Secretary signature \_\_\_\_\_

I hereby agree to all SCIRA Rules and Bylaws. I agree to notify a SCIRA measurer if any equipment is modified, replaced and/or transferred to proceed to a new measurement. SCIRA reserves the right to measure this boat and any equipment at any time.

Owner signature \_\_\_\_\_

Date \_\_\_\_\_

THIS CERTIFICATE REMAINS WITH THE OWNER OF THIS SNIPE. IT CAN BE REPLACED BY REMEASUREMENT



31744

# SNIFE CLASS RACING ASSOCIATION

## MEASUREMENT DATA SHEET FOR CERTIFIED BOATS

Revised February 2019

This page to be used for all boats. *For measurements in Italic refer to the Class Rules*

|             |               |                     |               |
|-------------|---------------|---------------------|---------------|
| HULL NUMBER | 31744         | BUILDER             | DB MARINE SAS |
| MODEL       | DB-R1         | YEAR OF MANUFACTURE | 2021          |
| OWNER       | DB MARINE SAS | COUNTRY             | ITALY         |

|                      |                                     |            |                                     |                                  |                          |
|----------------------|-------------------------------------|------------|-------------------------------------|----------------------------------|--------------------------|
| BARE HULL            | <input type="checkbox"/>            | COMPLETE   | <input checked="" type="checkbox"/> | INCOMPLETE                       | <input type="checkbox"/> |
| HULL MATERIAL: WOOD  | <input type="checkbox"/>            | FIBERGLASS | <input checked="" type="checkbox"/> | make note of                     |                          |
| DECK MATERIAL: WOOD  | <input type="checkbox"/>            | FIBERGLASS | <input checked="" type="checkbox"/> | incomplete items                 |                          |
| FROM CERTIFIED MOULD | <input checked="" type="checkbox"/> |            |                                     | filling the cells with <b>NO</b> |                          |

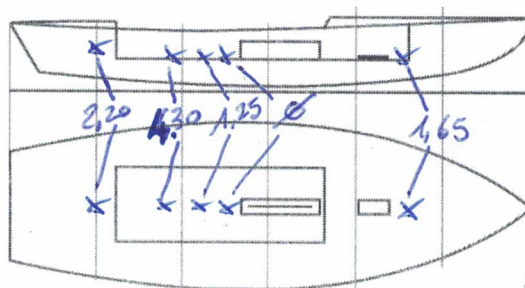
|  |        |                                      |      |
|--|--------|--------------------------------------|------|
| HULL WEIGHT (min 125kg)                | 128,9  | MAST LENGTH (Rules C.9.2, F.3.4)     | 6499 |
| TOTAL WEIGHT (min 172.8kg)             | 172,8  | Limiting marks & pin                 | ✓    |
| CORRECTOR WEIGHTS (max 15kg)           | 9,40   | Corrector weights (max 100gr)        | NO   |
| MOI                                    | 271,87 | BOOM LENGTH (max 2642mm)             | 2642 |
| Spring set #                           | 126    | Limiting marks & pin                 | ✓    |
| JIB FITTING                            | 281    | POLE LENGTH (max 2642mm)             | 2639 |
| (279-300mm hor. From Hull Datum Point) |        | RUDDER DIMENSIONS                    | ✓    |
| max 45mm vert. above sheerline)        |        | Weight (min. 2.72kg)                 | 3.0  |
| SHROUDS (1778-1981mm from HDP)         | 1779   | Corrector weights (Rule C.8.5)       | NO   |
| MAST HOLE (min 1494-mm from HDP)       | 1494   | Parallel to transom (tolerance 2mm)  | ✓    |
| UPPER GUDGEON (Rule D.2.3)             | 410    | DAGGERBOARD DIMENSIONS               | ✓    |
| LOWER GUDGEON (Rule D.2.3)             | 155    | Band                                 | ✓    |
| GUDGEONS DIAMETER (Rule D.2.3)         | 8      | Safety line (max 610mm long)         | ✓    |
|  |        | Restraining system (hooks or tablet) | ✓    |

52,12  
52,16  
52,17

+6m

Insert the **actual** measurement in the cells marked as

Mark corrector weights position and amount below. Data to be copied on the Official Snipe Label



DATE MEASURED 23/11/21 MEASURER'S STAMP

MEASURER'S NAME STEFANO LONGHI

NOTES:

**04 SCIRA**  
**MEASURER**  
**ITALY**

31744

| Keel    |        |                 |        |                 |
|---------|--------|-----------------|--------|-----------------|
| Station | Height |                 | Width  |                 |
|         | Actual | Allowable Range | Actual | Allowable Range |
| 400mm   |        | 223-235         |        |                 |
| 1       |        | 162             |        | Min 51          |
| 2       |        | 89-101          |        | 99-105          |
| 3       |        | 51-63           |        | 99-105          |
| 4       |        | 58-70           |        | 99-105          |
| 5       |        | 114             |        | 99-105          |
| Transom |        | 166-168         |        | 99-105          |

| Stem Offset      |                                 |        |
|------------------|---------------------------------|--------|
| up from baseline | back from HDP                   | Actual |
| 267              | 267-279                         |        |
| 305              | 194-206                         |        |
| 337              | 153-165                         |        |
| 381              | 108-120                         |        |
| 457              | 54-66                           |        |
| 527              | 26-38                           |        |
| 311 to 387       | intersection of chine extension |        |

| Miscellaneous             |        |                 |                               |        |                 |
|---------------------------|--------|-----------------|-------------------------------|--------|-----------------|
| Measurement               | Actual | Allowable Range | Measurement                   | Actual | Allowable Range |
| LOA                       |        | 4711-4737       | Chine radius at st. 1         |        | Max 19          |
| Horizontal transom offset |        | 203-229         | Chine radius st. 2 to transom |        | Max 3           |
| Hull Datum Point height   |        | 683-708         | Deck height                   |        | Max 127         |
| Bow radius                |        | Max 25          |                               |        |                 |

| Topside Measurements                           |        |                 |                               |        |                 |
|--|--------|-----------------|-------------------------------|--------|-----------------|
| Measurement                                    | Actual | Allowable Range | Measurement                   | Actual | Allowable Range |
| Aft end of dagg. slot from Hull datum point    |        | 2438-2464       | Mast step to sheer (vertical) | 395    | 390-400         |
| Top of case parallel to baseline               |        | tolerance 2     | Mast hole in the deck         | 170x60 | Max 256x76      |
| Aft edge of slot perpendicular to baseline     |        | tolerance 2     | Length of foredeck            | ✓      | Min 1842        |
| Forward edge of slot perpendicular to baseline |        | tolerance 6     | Length of aft deck            | ✓      | Min 457         |
| Keel to top of daggerboard case                | 311    | 310-313         | Sheer strikes                 | ✓      | Max 32          |
| Length of daggerboard slot                     | 525    | Max 546         | Gunwale radius                | ✓      | Max 12          |
| Width of daggerboard slot                      | 12     | Max 13          | Splashboard                   | ✓      | Min 51 x 610    |

Measurer

STEFANO LONGHI

Stamp nr.

04 SCIRA MEASURER ITALY

31744

## SCIRA Measurement Data Sheet

To be used with the 80/20 true baseline measurement frame

For boats built from January 1st, 2018. For older boats use the MDS in force in the year of manufacturing

Owner DB MARINE SASDate 29/11/21Hull 31744 Builder DB MARINE SAS Material FIBERGLASSNEW MOULD: FIRST  OR  OF 5 CERTIFICATION RENEW  Y/N

DO NOT COMPLETE IF FROM A CERTIFIED MOULD

| Chine   |           |      |       |                 |        |                 |
|---------|-----------|------|-------|-----------------|--------|-----------------|
|         | Height    |      |       |                 | Width  |                 |
| Station | Starboard | Port | Total | Allowable Range | Actual | Allowable Range |
| 1       |           |      |       | 838-864         |        | 527-540         |
| 2       |           |      |       | 724-749         |        | 991-1003        |
| 3       |           |      |       | 673-699         |        | 1232-1245       |
| 4       |           |      |       | 680-705         |        | 1270-1283       |
| 5       |           |      |       | 762-787         |        | 1137-1149       |
| Transom |           |      |       | 902-927         |        | 952-965         |

| Sheer   |           |      |       |                 |        |                 |
|---------|-----------|------|-------|-----------------|--------|-----------------|
|         | Height    |      |       |                 | Width  |                 |
| Station | Starboard | Port | Total | Allowable Range | Actual | Allowable Range |
| 1       |           |      |       | 1499-1549       |        | 895-921         |
| 2       |           |      |       | 1391-1441       |        | 1346-1372       |
| 3       |           |      |       | 1333-1384       |        | 1511-1537       |
| 4       |           |      |       | 1321-1372       |        | 1473-1499       |
| 5       |           |      |       | 1321-1372       |        | 1270-1295       |
| Transom |           |      |       | 1384-1435       |        | 1022-1048       |

04 SCIRA  
 Snipe Class International Racing Association  
 STEFANO WONGHAI