



Class Measurement Certificate

Manufacturer DBMARINE Hull Number 31753 Year 2022 of

Builder DBMARINE Model DB-R1

Weight 172,80 kgs

Mark corrector weights here

Corrector weights 9,05 kgs

Last builder SIDEKINDER

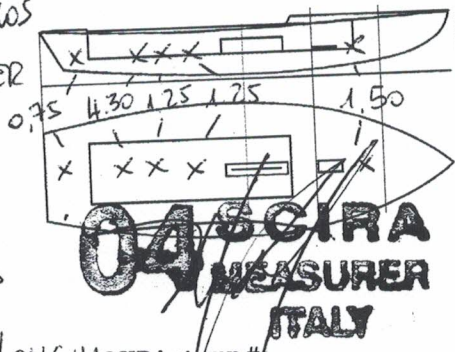
Corrector weights Ø

MOI value 271,866

Owner DBMARINE SAS

Country ITALY

Measurer/s STEFANO LONGHI SCIRA stamp # 04



This certificate is not valid until signed and stamped by the NS. This certificate indicates that the boat has a registered MDS on file in the SCIRA office.

Date of measurement 15.04.2022

National Secretary signature _____

I hereby agree to all SCIRA Rules and Bylaws. I agree to notify a SCIRA measurer if any equipment is modified, replaced and/or transferred to proceed to a new measurement. SCIRA reserves the right to measure this boat and any equipment at any time.

Owner signature _____

Date _____

THIS CERTIFICATE REMAINS WITH THE OWNER OF THIS SNIPE. IT CAN BE REPLACED BY REMEASUREMENT

SNIPE CLASS RACING ASSOCIATION

MEASUREMENT DATA SHEET FOR CERTIFIED BOATS

Revised February 2019

This page to be used for all boats. For measurements in *Italic* refer to the Class Rules

HULL NUMBER 31753 BUILDER DB MARINE SAS
 MODEL DB-R1 YEAR OF MANUFACTURE 2022
 OWNER DB MARINE SAS COUNTRY ITALY

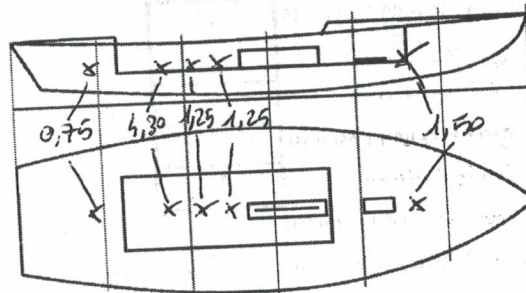
BARE HULL COMPLETE INCOMPLETE
 HULL MATERIAL: WOOD FIBERGLASS make note of
 DECK MATERIAL: WOOD FIBERGLASS incomplete items
 filling the cells with **NO**

FROM CERTIFIED MOULD

HULL WEIGHT (min 125kg)	<u>128,50</u>	MAST LENGTH (Rules C.9.2, F.3.4)	<u>6499</u>
TOTAL WEIGHT (min 172.8kg)	<u>172,80</u>	Limiting marks & pin	<input checked="" type="checkbox"/>
CORRECTOR WEIGHTS (max 15kg)	<u>9,05</u>	Corrector weights (max 100gr)	<u>NO</u>
MOI <u>52.12</u>	<u>271,866</u>	BOOM LENGTH (max 2642mm)	<u>2640</u>
Spring set #	<u>126</u>	Limiting marks & pin	<input checked="" type="checkbox"/>
JIB FITTING	<u>280</u>	POLE LENGTH (max 2642mm)	<u>2642</u>
(279-300mm hor. From Hull Datum Point)		RUDDER DIMENSIONS	<u>OK</u>
max 45mm vert. above sheerline)		Weight (min. 2.72kg)	<u>3,05</u>
SHROUDS (1778-1981mm from HDP)	<u>1779</u>	Corrector weights (Rule C.8.5)	<u>NO</u>
MAST HOLE (min 1494-mm from HDP)	<u>1494</u>	Parallel to transom (tolerance 2mm)	<input checked="" type="checkbox"/>
UPPER GUDGEON (Rule D.2.3)	<u>410</u>	DAGGERBOARD DIMENSIONS	<input checked="" type="checkbox"/>
LOWER GUDGEON (Rule D.2.3)	<u>154</u>	Band	<input checked="" type="checkbox"/>
GUDGEONS DIAMETER (Rule D.2.3)	<u>8</u>	Safety line (max 610mm long)	<input checked="" type="checkbox"/>
		Restraining system (hooks or tablet)	<input checked="" type="checkbox"/>

Insert the **actual** measurement in the cells marked as

Mark corrector weights position and amount below. Data to be copied on the Official Snipe Label



DATE MEASURED 15/04/2022 MEASURER'S STAMP

MEASURER'S NAME STEFANO LONGHI

NOTES:



HULL NR. 31753

Keel				
Station	Height		Width	
	Actual	Allowable Range	Actual	Allowable Range
400mm		223-235		
1		162		Min 51
2		89-101		99-105
3		51-63		99-105
4		58-70		99-105
5		114		99-105
Transom		166-168		99-105

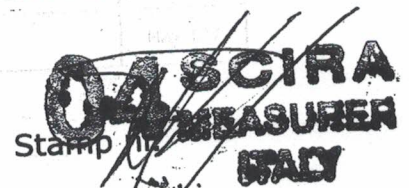
Stem Offset		
up from baseline	back from HDP	Actual
267	267-279	
305	194-206	
337	153-165	
381	108-120	
457	54-66	
527	26-38	
311 to 387	intersection of chine extension	

Miscellaneous					
Measurement	Actual	Allowable Range	Measurement	Actual	Allowable Range
LOA		4711-4737	Chine radius at st. 1		Max 19
Horizontal transom offset		203-229	Chine radius st. 2 to transom		Max 3
Hull Datum Point height		683-708	Deck height		Max 127
Bow radius		Max 25			

Topside Measurements					
Measurement	Actual	Allowable Range	Measurement	Actual	Allowable Range
Aft end of dagg. slot from Hull datum point		2438-2464	Mast step to sheer (vertical)	392	390-400
Top of case parallel to baseline		tolerance 2	Mast hole in the deck	170x60	Max 256x76
Aft edge of slot perpendicular to baseline		tolerance 2	Length of foredeck	✓	Min 1842
Forward edge of slot perpendicular to baseline		tolerance 6	Length of aft deck	✓	Min 457
Keel to top of daggerboard case	310	310-313	Sheer strikes	✓	Max 32
Length of daggerboard slot	525	Max 546	Gunwale radius		Max 12
Width of daggerboard slot	12	Max 13	Splashboard	✓	Min 51 x 610

Measurer

STEFANO LONGHI



SCIRA Measurement Data Sheet

To be used with the 80/20 true baseline measurement frame

For boats built from January 1st, 2018. For older boats use the MDS in force in the year of manufacturing

Owner DB MARINE SAS Date 15/04/2022

Hull 31753 Builder DB MARINE SAS Material FIBERGLASS

NEW MOULD: FIRST OR OF 5 CERTIFICATION RENEW Y/N

DO NOT COMPLETE IF FROM A CERTIFIED MOULD

Chine						
	Height				Width	
Station	Starboard	Port	Total	Allowable Range	Actual	Allowable Range
1				838-864		527-540
2				724-749		991-1003
3				673-699		1232-1245
4				680-705		1270-1283
5				762-787		1137-1149
Transom				902-927		952-965

Sheer						
	Height				Width	
Station	Starboard	Port	Total	Allowable Range	Actual	Allowable Range
1				1499-1549		895-921
2				1391-1441		1346-1372
3				1333-1384		1511-1537
4				1321-1372		1473-1499
5				1321-1372		1270-1295
Transom				1384-1435		1022-1048

MEASURER: STEFANO LONGHI



 Snipe Class International Racing Association

 ITALY