

SCIRA Measurement Data Sheet

To be used with the 80/20 true baseline measurement frame

For boats built from January 1st, 2018. For older boats use the MDS in force in the year of manufacturing

Owner Miguel Ángel Rubiño **Date** 5th Feb 2022

Hull 31755 **Builder** Zeltic **Material** GRP

NEW MOULD: FIRST OR OF 5 CERTIFICATION RENEW Y/N

DO NOT COMPLETE IF FROM A CERTIFIED MOULD

Chine						
	Height				Width	
Station	Starboard	Port	Total	Allowable Range	Actual	Allowable Range
1	433	428	861	838-864	535	527-540
2	377	367	744	724-749	1003	991-1003
3	350	333	683	673-699	1239	1232-1245
4	354	335	689	680-705	1277	1270-1283
5	396	374	770	762-787	1147	1137-1149
Transom	463	443	906	902-927	963	952-965

Sheer						
	Height				Width	
Station	Starboard	Port	Total	Allowable Range	Actual	Allowable Range
1	775	768	1543	1499-1549	921	895-921
2	722	710	1432	1391-1441	1365	1346-1372
3	690	671	1361	1333-1384	1529	1511-1537
4	681	660	1341	1321-1372	1495	1473-1499
5	692	668	1360	1321-1372	1291	1270-1295
Transom	709	686	1395	1384-1435	1025	1022-1048

Keel				
Station	Height		Width	
	Actual	Allowable Range	Actual	Allowable Range
400mm	223	223-235		
1		162	94	Min 51
2	98	89-101	103	99-105
3	61	51-63	102	99-105
4	70	58-70	102	99-105
5		114	102	99-105
Transom	166	166-178	104	99-105

Stem Offset		
up from baseline	back from HDP	Actual
267	267-279	267
305	194-206	194
337	153-165	153
381	108-120	108
457	54-66	56
527	26-38	30
311 to 387	intersection of chine extension	

Ok (345)

Miscellaneous					
Measurement	Actual	Allowable Range	Measurement	Actual	Allowable Range
LOA	4729	4711-4737	Chine radius at st. 1	Ok	Max 19
Horizontal transom offset	203	203-229	Chine radius st. 2 to transom	Ok	Max 3
Hull Datum Point height	704	683-708	Deck height	126	Max 127
Bow radius	Ok	Max 25	Cockpit width	755	Max 1016

Topside Measurements					
Measurement	Actual	Allowable Range	Measurement	Actual	Allowable Range
Aft end of dagg. slot from Hull datum point	2458	2438-2464	Heel point to sheer (vertical)	395	390-400
Top of case parallel to baseline	Ok	tolerance 2	Mast hole in the deck	154x64	Max256x76
Aft edge of slot perpendicular to baseline	Ok	tolerance 2	Length of foredeck	1845	Min 1842
Forward edge of slot perpendicular to baseline	Ok	tolerance 6	Length of aft deck	1250	Min 457
Keel to top of daggerboard case	311	310-313	Sheer strikes	32	Max 32
Length of daggerboard slot	545	Max 546	Gunwale radius	Ok	Max 12
Width of daggerboard slot	12	Max 13	Splashboard	Ok	Min 51 x 610


 Measurer

Fernando Tajuelo

03 SCIRA
MEASURER
SPAIN
 Stamp nr.

SNIFE CLASS RACING ASSOCIATION

MEASUREMENT DATA SHEET FOR CERTIFIED BOATS

Revised February 2019

This page to be used for all boats. For measurements in Italic refer to the Class Rules

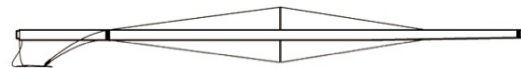
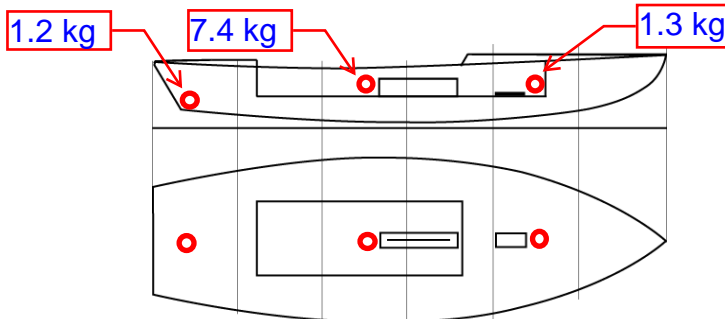
HULL NUMBER	31755	BUILDER	Zeltic
MODEL	Zeltic	YEAR OF MANUFACTURE	2022
OWNER	Miguel Ángel Rubiño	COUNTRY	ESP

BARE HULL	<input type="checkbox"/>	COMPLETE	<input checked="" type="checkbox"/>	INCOMPLETE	<input type="checkbox"/>
HULL MATERIAL: WOOD	<input type="checkbox"/>	FIBERGLASS	<input checked="" type="checkbox"/>	make note of	
DECK MATERIAL: WOOD	<input type="checkbox"/>	FIBERGLASS	<input checked="" type="checkbox"/>	incomplete items	
FROM CERTIFIED MOULD	<input checked="" type="checkbox"/>	filling the cells with NO			

HULL WEIGHT (min 125kg)	131.2	MAST LENGTH (Rules C.9.2, F.3.4)	6499
TOTAL WEIGHT (min 172.8kg)	172.8	Limiting marks & pin	OK
CORRECTOR WEIGHTS (max 15kg)	9.9	Corrector weights (max 100gr)	0
MOI	271	BOOM LENGTH (max 2642mm)	2585
Spring set #	130	Limiting marks & pin	OK
JIB FITTING	Ok / 281	POLE LENGTH (max 2642mm)	2642
(279-330mm hor. From Hull Datum Point)		RUDDER DIMENSIONS	OK
max 45mm vert. above sheerline)		Weight (min. 2.72kg)	3.44
SHROUDS (1778-1981mm from HDP)	1778	Corrector weights (Rule C.8.5)	0
MAST HOLE (min 1494-mm from HDP)	1494	Parallel to transom (tolerance 2mm)	OK
UPPER GUDGEON (Rule D.2.3)	411	DAGGERBOARD DIMENSIONS	OK
LOWER GUDGEON (Rule D.2.3)	156	Band	OK
GUDGEONS DIAMETER (Rule D.2.3)	8.1	Safety line (max 610mm long)	610
		Restraining system (hooks or tablet)	OK

Insert the **actual** measurement in the cells marked as

Mark corrector weights position and amount below. Data to be copied on the Official Snipe Label



03 SCIRA MEASURER SPAIN

DATE MEASURED 5th Feb 2022 MEASURER'S STAMP

MEASURER'S NAME Fernando Tajuelo

NOTES:

Complies mast hole distance with a 10 mm thick plate at the front of moulded mast hole.