

Class Measurement Certificate

Manufacturer 2022 Hull Number 31766 Year of

Builder DB MARINE Model DB-R1

Weight 172,80 kgs Mark corrector weights here

Corrector weights 9,65 kgs

Last builder SW

Corrector weights Ø

MOI value 271,55

Owner DB MARINE

Country ITALY

Measurer/ STEFANO LONGHI SCIRA stamp # ITALY

This certificate is not valid until signed and stamped by the NS. This certificate indicates that the boat has a registered MDS on file in the SCIRA office.

Date of measurement 15.07.2022

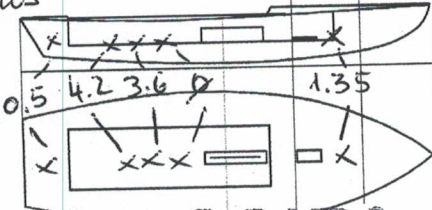
National Secretary signature _____

I hereby agree to all SCIRA Rules and Bylaws. I agree to notify a SCIRA measurer if any equipment is modified, replaced and/or transferred to proceed to a new measurement. SCIRA reserves the right to measure this boat and any equipment at any time.

Owner signature _____

Date _____

**THIS CERTIFICATE REMAINS WITH THE OWNER OF THIS SNIPE.
IT CAN BE REPLACED BY REMEASUREMENT**



04 SCIRA
MEASURER

SNIFE CLASS RACING ASSOCIATION

MEASUREMENT DATA SHEET FOR CERTIFIED BOATS

Revised February 2019

This page to be used for all boats. *For measurements in Italic refer to the Class Rules*

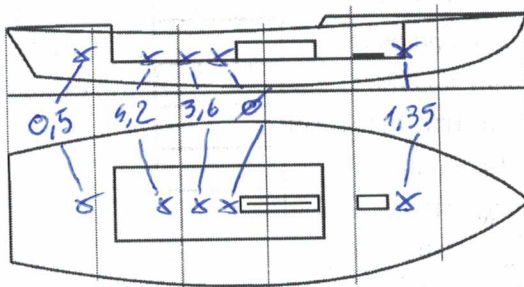
HULL NUMBER	31766	BUILDER	DB MARINE SAS
MODEL	DB-R1	YEAR OF MANUFACTURE	2022
OWNER	DB MARINE	COUNTRY	ITALY

BARE HULL	<input type="checkbox"/>	COMPLETE	<input checked="" type="checkbox"/>	INCOMPLETE	<input type="checkbox"/>
HULL MATERIAL: WOOD	<input type="checkbox"/>	FIBERGLASS	<input checked="" type="checkbox"/>	make note of	
DECK MATERIAL: WOOD	<input type="checkbox"/>	FIBERGLASS	<input checked="" type="checkbox"/>	incomplete items	
FROM CERTIFIED MOULD	<input checked="" type="checkbox"/>			filling the cells with NO	

HULL WEIGHT (min 125kg)	127,50	MAST LENGTH (Rules C.9.2, F.3.4)	6499
TOTAL WEIGHT (min 172.8kg)	172,80	Limiting marks & pin	✓
CORRECTOR WEIGHTS (max 15kg)	9,65	Corrector weights (max 100gr)	NO
MOI	271,55	BOOM LENGTH (max 2642mm)	2630
Spring set #	126	Limiting marks & pin	✓
JIB FITTING	281	POLE LENGTH (max 2642mm)	2641
(279-300mm hor. From Hull Datum Point)		RUDDER DIMENSIONS	OK
max 45mm vert. above sheerline)		Weight (min. 2.72kg)	3,10
SHROUDS (1778-1981mm from HDP)	1779	Corrector weights (Rule C.8.5)	NO
MAST HOLE (min 1494-mm from HDP)	1494	9mm Parallel to transom (tolerance 2mm)	✓
UPPER GUDGEON (Rule D.2.3)	409	DAGGERBOARD DIMENSIONS	✓
LOWER GUDGEON (Rule D.2.3)	155	Band	✓
GUDGEONS DIAMETER (Rule D.2.3)	8	Safety line (max 610mm long)	✓
		Restraining system (hooks or tablet)	✓

Insert the **actual** measurement in the cells marked as

Mark corrector weights position and amount below. Data to be copied on the Official Snipe Label



DATE MEASURED 15.07.2022 MEASURER'S STAMP

MEASURER'S NAME STEFANO LONGHI

NOTES:

SCIRA Measurement Data Sheet

To be used with the 80/20 true baseline measurement frame
 For boats built from January 1st, 2018. For older boats use the MDS in force in the year of manufacturing

Owner DB MARINE SAS Date 15.07.2022
 Hull 31766 Builder DB MARINE SAS Material FIBERGLASS

NEW MOULD: FIRST OR OF 5 CERTIFICATION RENEW Y/N
 DO NOT COMPLETE IF FROM A CERTIFIED MOULD

Chine						
Station	Height			Allowable Range	Width	
	Starboard	Port	Total		Actual	Allowable Range
1	423	421	844	838-864	533	527-540
2	366	362	728	724-749	999	991-1003
3	342	335	677	673-699	1236	1232-1245
4	347	348	693	680-705	1276	1270-1283
5	386	385	771	762-787	1140	1137-1149
Transom	460	457	917	902-927	960	952-965

Sheer						
Station	Height			Allowable Range	Width	
	Starboard	Port	Total		Actual	Allowable Range
1	775	770	1545	1499-1549	920	895-921
2	716	711	1427	1391-1441	1365	1346-1372
3	676	671	1347	1333-1384	1535	1511-1537
4	663	665	1328	1321-1372	1494	1473-1499
5	669	672	1341	1321-1372	1292	1270-1295
Transom	698	700	1398	1384-1435	1038	1022-1048

MEASURER: STEFANO LONGHI

Snipe Class International Racing Association

04 SCIRA
 MEASURER
 ITALY

Keel				
Station	Height		Width	
	Actual	Allowable Range	Actual	Allowable Range
240B				
400mm	225	223-235		
1	✓	162	82	Min 51
2	96	89-101	103	99-105
3	60	51-63	103	99-105
4	68	58-70	103	99-105
5	✓	114	103	99-105
Transom	170	166- 168 ¹⁷³	103	99-105

Stem Offset		
up from baseline	back from HDP	Actual
267	267-279	278
305	194-206	196
337	153-165	158
381	108-120	112
457	54-66	63
527	26-38	32
311 to 387	intersection of chine extension	

Miscellaneous					
Measurement	Actual	Allowable Range	Measurement	Actual	Allowable Range
LOA	4734	4711-4737	Chine radius at st. 1	✓	Max 19
Horizontal transom offset	205	203-229	Chine radius st. 2 to transom	✓	Max 3
Hull Datum Point height	701	683-708	Deck height	121	Max 127
Bow radius	✓	Max 25			

Topside Measurements					
Measurement	Actual	Allowable Range	Measurement	Actual	Allowable Range
Aft end of dagger slot from Hull datum point	2460	2438-2464	Mast step to sheer (vertical)	396	390-400
Top of case parallel to baseline	✓	tolerance 2	Mast hole in the deck	170x60	Max 256x76
Aft edge of slot perpendicular to baseline	✓	tolerance 2	Length of foredeck	✓	Min 1842
Forward edge of slot perpendicular to baseline	✓	tolerance 6	Length of aft deck	✓	Min 457
Keel to top of daggerboard case	312	310-313	Sheer strikes	✓	Max 32
Length of daggerboard slot	525	Max 546	Gunwale radius	✓	Max 12
Width of daggerboard slot	12	Max 13	Splashboard	✓	Min 51 x 610

Measurer

STEFANO LONGHI

Stamp nr.

Snipe Class International Rating Association

04 SCIRA MEASURER ITALY