

# SNIPE CLASS RACING ASSOCIATION

## MEASUREMENT DATA SHEET FOR CERTIFIED BOATS

Revised February 2019

This page to be used for all boats. *For measurements in Italic refer to the Class Rules*

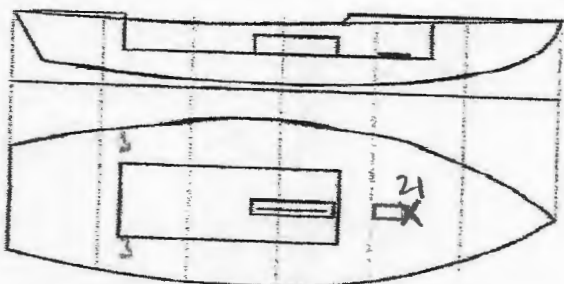
HULL NUMBER	31770	BUILDER	JILBERTH
MODEL	ML4	YEAR OF MANUFACTURE	2022
OWNER	EVAN HOFFMAN	COUNTRY	USA

BARE HULL	<input type="checkbox"/>	COMPLETE	<input checked="" type="checkbox"/>	INCOMPLETE	<input checked="" type="checkbox"/>
HULL MATERIAL: WOOD	<input type="checkbox"/>	FIBERGLASS	<input checked="" type="checkbox"/>	make note of	
DECK MATERIAL: WOOD	<input type="checkbox"/>	FIBERGLASS	<input checked="" type="checkbox"/>	incomplete items	
FROM CERTIFIED MOULD	<input type="checkbox"/>			filling the cells with <b>NO</b>	

<i>279</i>	HULL WEIGHT (min 125kg)	127	MAST LENGTH (Rules C.9.2, F.3.4)	6100
<i>381</i>	TOTAL WEIGHT (min 172.8kg)	173	Limiting marks & pin	<input checked="" type="checkbox"/>
<i>27</i>	CORRECTOR WEIGHTS (max 15kg)	12.3	Corrector weights (max 100gr)	-
<i>52.4</i>	MOI	27.7	BOOM LENGTH (max 2642mm)	2642
	Spring set #	15.77	Limiting marks & pin	<input checked="" type="checkbox"/>
	JIB FITTING	<input checked="" type="checkbox"/>	POLE LENGTH (max 2642mm)	2642
	(279-300mm hor. From Hull Datum Point)		RUDDER DIMENSIONS	<input checked="" type="checkbox"/>
	max 45mm vert. above sheerline)		Weight (min. 2.72kg)	2.73
	SHROUDS (1778-1981mm from HDP)	1279	Corrector weights (Rule C.8.5)	-
	MAST HOLE (min 1494-mm from HDP)	1415	Parallel to transom (tolerance 2mm)	<input checked="" type="checkbox"/>
	UPPER GUDGEON (Rule D.2.3)	407	DAGGERBOARD DIMENSIONS	<input checked="" type="checkbox"/>
	LOWER GUDGEON (Rule D.2.3)	152	Band	<input checked="" type="checkbox"/>
	GUDGEONS DIAMETER (Rule D.2.3)	8mm	Safety line (max 610mm long)	610
			Restraining system (hooks or tablet)	<input checked="" type="checkbox"/>

Insert the **actual** measurement in the cells marked as

Mark corrector weights position and amount below. Data to be copied on the Official Snipe Label



DATE MEASURED 3/28/22 MEASURER'S STAMP

MEASURER'S NAME Colin

NOTES:

## SCIRA Measurement Data Sheet

To be used with the 80/20 true baseline measurement frame

For boats built from January 1st, 2018. For older boats use the MDS in force in the year of manufacturing

Owner EVAN HOFFMAN Date 3/25/22

Hull 31770 Builder TIRETECH Material FG

NEW MOULD: FIRST  OR  OF 5 CERTIFICATION RENEW  Y/N

DO NOT COMPLETE IF FROM A CERTIFIED MOULD

Chine						
Station	Height			Allowable Range	Width	
	Starboard	Port	Total		Actual	Allowable Range
1	420	420	840	838-864	540	527-540
2	369	372	741	724-749	996	991-1003
3	342	345	687	673-699	1240	1232-1245
4	350	338	688	680-705	1273	1270-1283
5	317	370	687	762-787	1141	1137-1149
Transom	468	442	905	902-927	965	952-965

Sheer						
Station	Height			Allowable Range	Width	
	Starboard	Port	Total		Actual	Allowable Range
1	769	764	1533	1499-1549	903	895-921
2	718	720	1438	1391-1441	1360	1346-1372
3	690	686	1376	1333-1384	1528	1511-1537
4	706	680	1366	1321-1372	1498	1473-1499
5	700	662	1362	1321-1372	1295	1270-1295
Transom	708	680	1388	1384-1435	1048	1022-1048

<b>Keel</b>				
Station	Height		Width	
	Actual	Allowable Range	Actual	Allowable Range
400mm	✓	223-235	✓	
1	✓	162	✓	Min 51
2	✓	89-101	✓	99-105
3	✓	51-63	✓	99-105
4	✓	58-70	✓	99-105
5	✓	114	✓	99-105
Transom	✓	166-168	✓	99-105

<b>Stem Offset</b>		
up from baseline	back from HDP	Actual
267	267-279	✓
305	194-206	✓
337	153-165	✓
381	108-120	✓
457	54-66	✓
527	26-38	✓
311 to 387	intersection of chine extension	

<b>Miscellaneous</b>					
Measurement	Actual	Allowable Range	Measurement	Actual	Allowable Range
LOA	✓	4711-4737	Chine radius at st. 1	✓	Max 19
Horizontal transom offset	✓	203-229	Chine radius st. 2 to transom	✓	Max 3
Hull Datum Point height	✓	683-708	Deck height	✓	Max 127
Bow radius	✓	Max 25			

<b>Topside Measurements</b>					
Measurement	Actual	Allowable Range	Measurement	Actual	Allowable Range
Aft end of dagg. slot from Hull datum point	✓	2438-2464	Mast step to sheer (vertical)	✓	390-400
Top of case parallel to baseline	✓	tolerance 2	Mast hole in the deck	✓	Max 256x76
Aft edge of slot perpendicular to baseline	✓	tolerance 2	Length of foredeck	✓	Min 1842
Forward edge of slot perpendicular to baseline	✓	tolerance 6	Length of aft deck	✓	Min 457
Keel to top of daggerboard case	310	310-313	Sheer strikes	✓	Max 32
Length of daggerboard slot	✓	Max 546	Gunwale radius	✓	Max 12
Width of daggerboard slot	✓	Max 13	Splashboard	✓	Min 51 x 610

Measurer

Stamp nr.