



# SNIFE CLASS RACING ASSOCIATION

## MEASUREMENT DATA SHEET FOR CERTIFIED BOATS

Revised February 2019

This page to be used for all boats. *For measurements in Italic refer to the Class Rules*

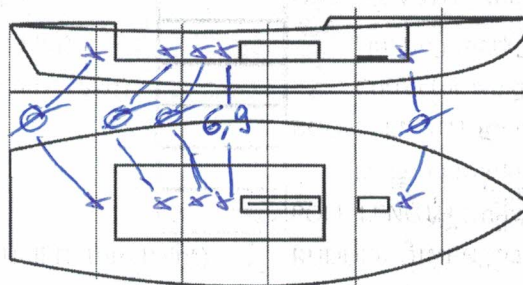
HULL NUMBER	31771	BUILDER	DB MARINE SAS
MODEL	DB-21 LTD. ED	YEAR OF MANUFACTURE	2022
OWNER	ARTHUR BLODGETT	COUNTRY	USA

BARE HULL	<input type="checkbox"/>	COMPLETE	<input checked="" type="checkbox"/>	INCOMPLETE	<input type="checkbox"/>
HULL MATERIAL: WOOD	<input type="checkbox"/>	FIBERGLASS	<input checked="" type="checkbox"/>	make note of	
DECK MATERIAL: WOOD	<input type="checkbox"/>	FIBERGLASS	<input checked="" type="checkbox"/>	incomplete items	
FROM CERTIFIED MOULD	<input checked="" type="checkbox"/>			filling the cells with <b>NO</b>	

HULL WEIGHT (min 125kg)	129,90	MAST LENGTH (Rules C.9.2, F.3.4)	6499
TOTAL WEIGHT (min 172.8kg)	172,80	Limiting marks & pin	✓
CORRECTOR WEIGHTS (max 15kg)	6,9	Corrector weights (max 100gr)	NO
MOI 52,15	272,16	BOOM LENGTH (max 2642mm)	2631
Spring set #	126	Limiting marks & pin	✓
JIB FITTING	280	POLE LENGTH (max 2642mm)	2640
(279-300mm hor. From Hull Datum Point)		RUDDER DIMENSIONS	✓
max 45mm vert. above sheerline)		Weight (min. 2.72kg)	3,10
SHROUDS (1778-1981mm from HDP)	1800	Corrector weights (Rule C.8.5)	NO
MAST HOLE (min 1494-mm from HDP)	1494	Parallel to transom (tolerance 2mm)	✓
UPPER GUDGEON (Rule D.2.3)	410	DAGGERBOARD DIMENSIONS	✓
LOWER GUDGEON (Rule D.2.3)	156	Band	✓
GUDGEONS DIAMETER (Rule D.2.3)	8	Safety line (max 610mm long)	✓
		Restraining system (hooks or tablet)	✓

Insert the **actual** measurement in the cells marked as

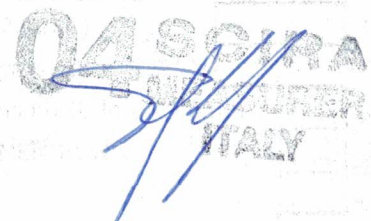
Mark corrector weights position and amount below. Data to be copied on the Official Snipe Label



DATE MEASURED 03.08.2022 MEASURER'S STAMP

MEASURER'S NAME STEFANO LONGHI

NOTES:



## SCIRA Measurement Data Sheet

To be used with the 80/20 true baseline measurement frame

For boats built from January 1st, 2018. For older boats use the MDS in force in the year of manufacturing

Owner ARTHUR BLODGETT - USA Date \_\_\_\_\_

Hull 31771 Builder DB MARINE SAS Material FIBERGLASS

NEW MOULD: FIRST  OR  OF 5 CERTIFICATION RENEW  Y/N

DO NOT COMPLETE IF FROM A CERTIFIED MOULD

<b>Chine</b>						
	Height				Width	
Station	Starboard	Port	Total	Allowable Range	Actual	Allowable Range
1				838-864		527-540
2				724-749		991-1003
3				673-699		1232-1245
4				680-705		1270-1283
5				762-787		1137-1149
Transom				902-927		952-965

<b>Sheer</b>						
	Height				Width	
Station	Starboard	Port	Total	Allowable Range	Actual	Allowable Range
1				1499-1549		895-921
2				1391-1441		1346-1372
3				1333-1384		1511-1537
4				1321-1372		1473-1499
5				1321-1372		1270-1295
Transom				1384-1435		1022-1048

MEASURER: STEFANO LONGHI

Snipe Class International Racing Association



HULL NR. 31771

Keel				
Station	Height		Width	
	Actual	Allowable Range	Actual	Allowable Range
400mm		223-235		
1		162		Min 51
2		89-101		99-105
3		51-63		99-105
4		58-70		99-105
5		114		99-105
Transom		166-168		99-105

Stem Offset		
up from baseline	back from HDP	Actual
267	267-279	
305	194-206	
337	153-165	
381	108-120	
457	54-66	
527	26-38	
311 to 387	intersection of chine extension	

Miscellaneous					
Measurement	Actual	Allowable Range	Measurement	Actual	Allowable Range
LOA		4711-4737	Chine radius at st. 1		Max 19
Horizontal transom offset		203-229	Chine radius st. 2 to transom		Max 3
Hull Datum Point height		683-708	Deck height		Max 127
Bow radius		Max 25			

Topside Measurements					
Measurement	Actual	Allowable Range	Measurement	Actual	Allowable Range
Aft end of dagg. slot from Hull datum point		2438-2464	Mast step to sheer (vertical)	398	390-400
Top of case parallel to baseline		tolerance 2	Mast hole in the deck	150x60	Max 256x76
Aft edge of slot perpendicular to baseline		tolerance 2	Length of foredeck	✓	Min 1842
Forward edge of slot perpendicular to baseline		tolerance 6	Length of aft deck	✓	Min 457
Keel to top of daggerboard case	311	310-313	Sheer strikes	✓	Max 32
Length of daggerboard slot	525	Max 546	Gunwale radius	✓	Max 12
Width of daggerboard slot	12	Max 13	Splashboard	✓	Min 51 x 610

Measurer  
STEFANO LONGHI

Stamp nr. 04 SCIRA MEASURER ITALY