

SNIPE CLASS RACING ASSOCIATION

MEASUREMENT DATA SHEET FOR CERTIFIED BOATS

Revised February 2019

This page to be used for all boats. *For measurements in Italic refer to the Class Rules*

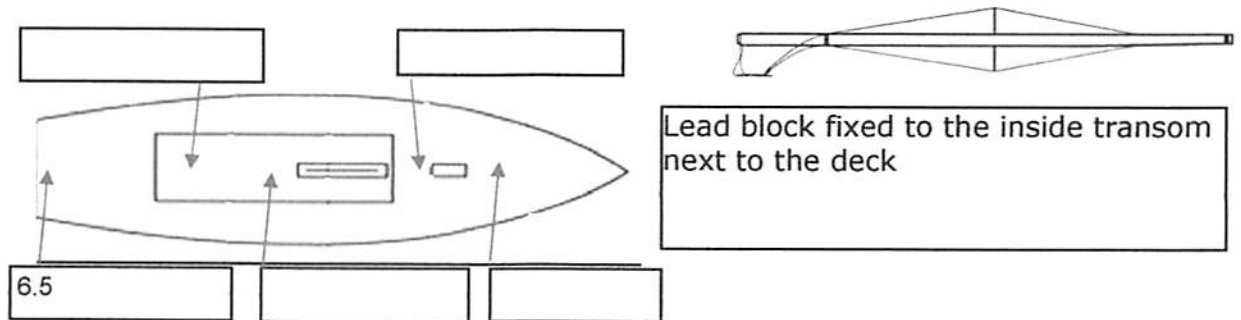
HULL NUMBER	31800	BUILDER	SINERGIA RG	
MODEL	B	YEAR OF MANUFACTURE	2022	
OWNER	SINERGIA RG		COUNTRY	ESPAÑA

BARE HULL	<input type="checkbox"/>	COMPLETE	<input checked="" type="checkbox"/>	NCOMPLETE	<input type="checkbox"/>
HULL MATERIAL: WOOD	<input type="checkbox"/>	FIBERGLASS	<input checked="" type="checkbox"/>	make note of	
DECK MATERIAL: WOOD	<input type="checkbox"/>	FIBERGLASS	<input checked="" type="checkbox"/>	incomplete items	
FROM CERTIFIED MOULD	<input checked="" type="checkbox"/>	filling the cells with NO			

Insert the actual measurement in the cells marked as X

HULL WEIGHT (min 125kg)	125.5	MAST LENGTH (Rules C.9.2,F.3.4)	OK
TOTAL WEIGHT (min 172.8kg)	167	Limiting marks & pin	OK
CORRECTOR WEIGHTS (max 15kg)	6.5	Corrector weighth (max 100gr)	-
MOI X	271	BOOM LENGTH (max 2642mm)	OK
Spring set #	124	Limiting marks & pin	OK
JIB FITTING	280	POLE LENGTH (max 2642mm)	OK
(279-330mm hor. From Hull Datum Point)		RUDDER DIMENSIONS	OK
max 45mm vert. above sheerline)	X	Weigth (min. 2.72kg)	OK
SHROUDS (1778-1981mm from HDP)	1778	Corrector weighth (Rule C.8.5)	-
MAST HOLE (min 1494-mm from HDP)	1483+11	Parallel to transom (tolerance 2mm)	OK
UPPER GUDGEON (Rule D.2.3)	410	DAGGERBOARD DIMENSIONS	OK
LOWER GUDGEON (Rule D.2.3)	155	Band (painted to 908 mm)	OK
GUDGEONS DIAMETER (Rule D.2.3)	8	Safety line (max 610mm long)	OK
	OK	Restraining system (hooks or tablet)	OK

Mark corrector weights position and amount below. Data to be copied on the Official Snipe Label



DATE MEASURED 03/06/2022

MEASURER'S STAMP

MEASURER'S NAME JOSE PEREZ MORALES



SINERGIA RG
31800

Date: 03/06/2022

Stem Offset / Perfil proa		
up from baseline (altura)	back from HDP / horiz. Desde proa	Actual /medido
267	267-279	267
305	194-206	195
337	153-165	153
381	108-120	108
457	54-66	54
527	26-38	26

Miscellaneous / Varios					
Measurement /Medida	Actual /medido	Allowable range / Rango	Measurement /Medida	Actual /medido	Allowable range / rango
LOA / Elora total	4734	4711-4737	Chine radius at st.1 / radio en E.1	19	19
Horizontal transo offset /retranqueo espejo popa en quilla	207	203-229	Chine radius at st.2 / radio en E.2	3	3
Hull Datum Point height/Altura Punto Origen	706	683-708	Deck height /Altura cubierta	112	Max 127
Bow radius/ Radio proa	OK	Max 25	Cockpit width / ancho bañera	806	Max 1016

Topside Measurement / Cubierta					
Measurement /Medida	Actual /medido	Allowable range / Rango	Measurement /Medida	Actual /medido	Allowable range / Rango
Aft end of dagg. Slot from hull datum point /Borde post. orza a	2460	2438-2464	Heel point to sheer (vertical) Altura pie mastil a cinton	390	390-400
Top case parallel to baseline / paralelismo caja orza a plano base	OK	tolerance 2	Mast hole in deck / Agujero mastil cubierta	155 X 60	Max 256 x76
Aft edge of slot perpend. to baseline / Perp. Popa cajera a	OK	tolerance 2	Length of foredeck / Longitud cubierta proa	1843	Min 1842
Forward edge of slot perpend. to baseline / Idem proa	OK	tolerance 6	Length of aftdeck / longitud cubierta popa	1190	Min 457
Keel to top of daggerboardcase / altura cajera	310	310-313	Sheer strikes	31.7	Max 32
Length of daggerboard slot /Longitud cajera	540	Max 546	Gunwalwe radius	OK	Max 12
Width of daggerboard slot / ancho cajera	12.8	Max 13	Splashboard / tajamar	53 X 800	Min51x610

Cartagena 03 de Junio 2022
Medidor

01 SCIRA
MEASURER
SPAIN

SCIRA MEASUREMENT DATA SHEET

Las medidas de rango están referidas al PLANO BASE REAL de la L 80/20

Owner: SINERGIA RG		Date: 03/06/2022	
Hull 31800	Builder: SINERGIA RG	Material: GPR	

Medido por: Jose Pérez Morales

Hull weight / Peso casco (min 125kg)	125.5
Total weight / Peso total (min 172.8kg)	167
Corrector weight / Lastre (max 15 kg)	6.5
MOI / Momento de inercia (max 271 kgm2)	271
Spring set / Muelles N°	124

Chine / Pantoque						
Station / Estación	Starboard / Estribor	Height / altura			Width / ancho	
		Port / Babor	Valor medio	Allowable range / Rango	Actual / medido	Allowable range / Rango
1	284	280	282	280-292	538	527-539
2	225	227	226	223/235	995	991-1003
3	204	204	204	197-209	1235	1232-1244
4	207	207	207	200-212	1273	1270-1282
5	242	243	242.5	242-254	1143	1137-1149
Transom / Espejo popa	313	311	312	312-324	954	953-965

Sheer / Cinton						
Station / Estación	Starboard / Estribor	Height / altura			Width / ancho	
		Port / Babor	Valor Medio	Allowable range / Rango	Actual / medido	Allowable range / Rango
1	622	632	627	610-635	917	895-921
2	567	567	567	556-581	1361	1346-1372
3	536	536	536	528-553	1521	1511-1537
4	528	529	528.5	521-546	1483	1473-1499
5	537	538	537.5	521-546	1281	1270-1296
Transom / Espejo popa	558	561	559.5	553-578	1040	1022-1048

Keel / Quilla				
Station / Estación	Height / altura		Width / ancho	
	Actual / medido	Allowable range / Rango	Actual / medido	Allowable range / Rango
400	223	223-235		NA
1	--	162	63	min 51
2	95	89-101	104	99-105
3	61	51-63	1	99-105
4	67	58-70	104	99-105
5	--	114	104	99-105
Transom / Espejo popa	166	166-178	104	99-105